

Part 5: Adult Basic Life Support and Cardiopulmonary Resuscitation Quality

Web-based Integrated 2010 & 2015 American Heart Association Guidelines for Cardiopulmonary Resuscitation and Emergency Cardiovascular Care

Key Words: cardiac arrest cardiopulmonary resuscitation defibrillation emergency

1 Highlights

1.1 2017 Highlights

These highlights summarize the key issues and changes in the adult and pediatric basic life support (BLS) 2017 focused updates to the American Heart Association (AHA) guidelines for cardiopulmonary resuscitation (CPR) and emergency cardiovascular care (ECC).

Summary of Key Issues and Major Changes

The topics reviewed here include the following:

- Dispatch-assisted CPR
- Use of continuous vs interrupted chest compressions by emergency medical services (EMS) providers
- Use of chest compression–only (Hands-Only) CPR vs CPR using chest compressions with ventilation in both the in-hospital and out-of-hospital settings

At the request of the AHA Training Network, we have clarified the descriptions of lay rescuers as follows:

1. Untrained
2. Trained in chest compression–only CPR
3. Trained in CPR using chest compressions and ventilation (rescue breaths)

Dispatch-Assisted CPR

2017 (Updated): We recommend that when dispatchers' instructions are needed, dispatchers should provide chest compression–only CPR instructions to callers for adults with suspected out-of-hospital cardiac arrest (OHCA).

2015 (Old): Dispatchers should provide chest compression–only CPR instructions to callers for adults with suspected OHCA.

Why: The 2017 BLS International Consensus on CPR and ECC Science With Treatment Recommendations (CoSTR) summary and systematic review considered instructions for dispatch-assisted chest compression–only CPR for OHCA. No new studies were reviewed for this topic.

Bystander CPR

2017 (Updated):

1. For adults in OHCA, untrained lay rescuers should provide chest compression–only CPR with or without dispatcher assistance.
2. For lay rescuers trained in chest compression–only CPR, we recommend that they provide chest compression–only CPR for adults in OHCA.
3. For lay rescuers trained in CPR using chest compressions and ventilation (rescue breaths), it is reasonable to provide ventilation (rescue breaths) in addition to chest compressions for the adult in OHCA.

2015 (Old):

1. For lay rescuers, compression-only CPR is a reasonable alternative to conventional CPR in the adult cardiac arrest patient.
2. For trained lay rescuers, it is reasonable to provide ventilation in addition to chest compressions for the adult in cardiac arrest.
3. For trained lay rescuers, it is reasonable to provide ventilation in addition to chest compressions for the adult in cardiac arrest.

Why: The 2017 BLS CoSTR summary and systematic review compared bystander use of chest compression–only CPR with CPR using chest compressions and ventilation (rescue breaths).

EMS-Delivered CPR

2017 (Updated):

1. We recommend that before placement of an advanced airway (supraglottic airway or tracheal tube), EMS providers perform CPR with cycles of 30 compressions and 2 breaths. As an alternative, it is reasonable for EMS providers to perform CPR in cycles of 30 compressions and 2 breaths without interrupting chest compressions to give breaths. It may be reasonable for EMS providers to use a rate of 10 breaths per minute (1 breath every 6 seconds) to provide asynchronous ventilation during continuous chest compressions before placement of an advanced airway.
2. These updated recommendations do not preclude the 2015 recommendation that a reasonable alternative for EMS systems that have adopted bundles of care is the initial use of minimally interrupted chest compressions (ie, delayed ventilation) for witnessed, shockable OHCA.

2015 (Old):

1. As long as the patient does not have an advanced airway in place, the rescuers should deliver cycles of 30 compressions and 2 breaths during CPR. The rescuer delivers breaths during pauses in compressions and delivers each breath over approximately 1 second.
2. However, in EMS systems that use bundles of care involving continuous chest compressions, the use of passive ventilation techniques may be considered as part of that bundle.

Why: The 2017 BLS CoSTR summary and systematic review compared bystander use of chest compression–only CPR with CPR using chest compressions and ventilation (rescue breaths).

CPR for Cardiac Arrest

2017 (Updated): Whenever an advanced airway (tracheal tube or supraglottic device) is inserted during CPR, it may be reasonable for providers to perform continuous compressions with positive-pressure ventilation delivered without pausing chest compressions.

2017 (Unchanged): It may be reasonable for the provider to deliver 1 breath every 6 seconds (10 breaths per minute) while continuous chest compressions are being performed.

2015 (Old): When the victim has an advanced airway in place during CPR, rescuers no longer deliver cycles of 30 compressions and 2 breaths (ie, they no longer interrupt compressions to deliver 2 breaths). Instead, it may be reasonable for the provider to deliver 1 breath every 6 seconds (10 breaths per minute) while continuous chest compressions are being performed.

Why: The 2017 BLS CoSTR summary and systematic review considered the use of continuous vs interrupted chest compressions after placement of an advanced airway in the hospital setting. No new studies were reviewed for this topic.

Chest Compression–to–Ventilation Ratio

2017 (Updated): It is reasonable for rescuers trained in CPR using chest compressions and ventilation (rescue breaths) to provide a compression-to-ventilation ratio of 30:2 for adults in cardiac arrest.

2015 (Old): It is reasonable for rescuers to provide a compression-to-ventilation ratio of 30:2 for adults in cardiac arrest.

Why: The 2017 BLS CoSTR summary and systematic review considered the compression-to-ventilation ratio for adult BLS. No new studies were reviewed for this topic.

1.2 2015 Highlights: Lay Rescuer CPR

Summary of Key Issues and Major Changes

Key issues and major changes in the 2015 Guidelines Update recommendations for adult CPR by lay rescuers include the following:

- The crucial links in the out-of-hospital adult Chain of Survival are unchanged from 2010, with continued emphasis on the simplified universal Adult Basic Life Support (BLS) Algorithm.
- The Adult BLS Algorithm has been modified to reflect the fact that rescuers can activate an emergency response (ie, through use of a mobile telephone) without leaving the victim's side.
- It is recommended that communities with people at risk for cardiac arrest implement PAD programs.
- Recommendations have been strengthened to encourage immediate recognition of unresponsiveness, activation of the emergency response system, and initiation of CPR if the lay rescuer finds an unresponsive victim is not breathing or not breathing normally (eg, gasping).
- Emphasis has been increased about the rapid identification of potential cardiac arrest by dispatchers, with immediate provision of CPR instructions to the caller (ie, dispatch-guided CPR).
- The recommended sequence for a single rescuer has been confirmed: the single rescuer is to initiate chest compressions before giving rescue breaths (C-A-B rather than A-B-C) to reduce delay to first compression. The single rescuer should begin CPR with 30 chest compressions followed by 2 breaths.
- There is continued emphasis on the characteristics of high-quality CPR: compressing the chest at an adequate rate and depth, allowing complete chest recoil after each compression, minimizing interruptions in compressions, and avoiding excessive ventilation.
- The recommended chest compression rate is 100 to 120/min (updated from *at least* 100/min).
- The clarified recommendation for chest compression depth for adults is at least 2 inches (5 cm) but not greater than 2.4 inches (6 cm).
- Bystander-administered naloxone may be considered for suspected life-threatening opioid-associated emergencies.

These changes are designed to simplify lay rescuer training and to emphasize the need for early chest compressions for victims of sudden cardiac arrest. More information about these changes appears below.

In the following topics, changes or points of emphasis that are similar for lay rescuers and HCPs are noted with an asterisk (*).

Dispatcher Identification of Agonal Gasps

Cardiac arrest victims sometimes present with seizure-like activity or agonal gasps that can confuse potential rescuers. Dispatchers should be specifically trained to identify these presentations of cardiac arrest to enable prompt recognition and immediate dispatcher-guided CPR.

2015 (Updated): To help bystanders recognize cardiac arrest, dispatchers should inquire about a victim's absence of responsiveness and quality of breathing (normal versus not normal). If the victim is unresponsive with absent or abnormal breathing, the rescuer and the dispatcher should assume that the victim is in cardiac arrest. Dispatchers should be educated to identify unresponsiveness with abnormal and agonal gasps across a range of clinical presentations and descriptions.

2010 (Old): To help bystanders recognize cardiac arrest, dispatchers should ask about an adult victim's responsiveness, if the victim is breathing, and if the breathing is normal, in an attempt to distinguish victims with agonal gasps (ie, in those who need CPR) from victims who are breathing normally and do not need CPR.

Why: This change from the 2010 Guidelines emphasizes the role that emergency dispatchers can play in helping the lay rescuer recognize absent or abnormal breathing.

Dispatchers should be specifically educated to help bystanders recognize that agonal gasps are a sign of cardiac arrest. Dispatchers should also be aware that brief generalized seizures may be the first manifestation of cardiac arrest. In summary, in addition to activating professional emergency responders, the dispatcher should ask straightforward questions about whether the patient is unresponsive and if breathing is normal or abnormal in order to identify patients with possible cardiac arrest and enable dispatcher-guided CPR.

Emphasis on Chest Compressions* 2015

2015 (Updated): Untrained lay rescuers should provide compression-only (Hands-Only) CPR, with or without dispatcher guidance, for adult victims of cardiac arrest. The rescuer should continue compression-only CPR until the arrival of an AED or rescuers with additional training. All lay rescuers should, at a minimum, provide chest compressions for victims of cardiac arrest. In addition, if the trained lay rescuer is able to perform rescue breaths, he or she should add rescue breaths in a ratio of 30 compressions to 2 breaths. The rescuer should continue CPR until an AED arrives and is ready for use, EMS providers take over care of the victim, or the victim starts to move.

2010 (Old): If a bystander is not trained in CPR, the bystander should provide compression-only CPR for the adult victim who suddenly collapses, with an emphasis to “push hard and fast” on the center of the chest, or follow the directions of the EMS dispatcher. The rescuer should continue compression-only CPR until an AED arrives and is ready for use or EMS providers take over care of the victim. All trained lay rescuers should, at a minimum, provide chest compressions for victims of cardiac arrest. In addition, if the trained lay rescuer is able to perform rescue breaths, compressions and breaths should be provided in a ratio of 30 compressions to 2 breaths. The rescuer should continue CPR until an AED arrives and is ready for use or EMS providers take over care of the victim.

Why: Compression-only CPR is easy for an untrained rescuer to perform and can be more effectively guided by dispatchers over the telephone. Moreover, survival rates from adult cardiac arrests of cardiac etiology are similar with either compression only CPR or CPR with both compressions and rescue breaths when provided before EMS arrival. However, for the trained lay rescuer who is able, the recommendation remains for the rescuer to perform both compressions and breaths.

Chest Compression Rate*

2015 (Updated): In adult victims of cardiac arrest, it is reasonable for rescuers to perform chest compressions at a rate of 100 to 120/min.

2010 (Old): It is reasonable for lay rescuers and HCPs to perform chest compressions at a rate of at least 100/min.

Why: The number of chest compressions delivered per minute during CPR is an important determinant of return of spontaneous circulation (ROSC) and survival with good neurologic function. The actual number of chest compressions delivered per minute is determined by the rate of chest compressions and the number and duration of interruptions in compressions (eg, to open the airway, deliver rescue breaths, allow AED analysis). In most studies, more compressions are associated with higher survival rates, and fewer compressions are associated with lower survival rates. Provision of adequate chest compressions requires an emphasis not only on an adequate compression rate but also on minimizing interruptions to this critical component of CPR. An inadequate compression rate or frequent interruptions (or both) will reduce the total number of compressions delivered per minute. New to the 2015 Guidelines Update are upper limits of recommended compression rate and compression depth, based on preliminary data suggesting that excessive compression rate and depth adversely affect outcomes. The addition of an upper limit of compression rate is based on 1 large registry study analysis associating extremely rapid compression rates (greater than 140/min) with inadequate compression depth. Box 1 uses the analogy of automobile travel to explain the effect of compression rate and interruptions on total number of compressions delivered during resuscitation.

Number of Compressions Delivered Affected by Compression Rate and by Interruptions

The total number of compressions delivered during resuscitation is an important determinant of survival from cardiac arrest.

- The number of compressions delivered is affected by the compression *rate* (the frequency of chest compressions per minute) and by the compression *fraction* (the portion of total CPR time during which compressions are performed). Increases in compression rate and fraction increase the total number of compressions delivered. Compression fraction is improved by reducing the number and duration of any interruptions in compressions.
- An analogy can be found in automobile travel. When traveling in an automobile, the number of miles traveled in a day is affected not only by the speed (rate of travel) but also by the number and duration of any stops (interruptions in travel). Traveling 60 mph without interruptions translates to an actual travel distance of 60 miles in an hour. Traveling 60 mph except for a 10-minute stop translates to an actual travel of 50 miles in that hour. The more frequent and the more prolonged the stops, the lower the actual miles traveled.
- During CPR, rescuers should deliver effective compressions at an appropriate rate (100 to 120/min) and depth while minimizing the number and duration of interruptions in chest compressions. Additional components of high-quality CPR include allowing complete chest recoil after each compression and avoiding excessive ventilation.

Chest Compression Depth*

2015 (Updated): During manual CPR, rescuers should perform chest compressions to a depth of at least 2 inches (5 cm) for an average adult, while avoiding excessive chest compression depths (greater than 2.4 inches [6 cm]).

2010 (Old): The adult sternum should be depressed at least 2 inches (5 cm).

Why: Compressions create blood flow primarily by increasing intrathoracic pressure and directly compressing the heart, which in turn results in critical blood flow and oxygen delivery to the heart and brain. Rescuers often do not compress the chest deeply enough despite the recommendation to “push hard.” While a compression depth of at least 2 inches (5 cm) is recommended, the 2015 Guidelines Update incorporates new evidence about the potential for an upper threshold of compression depth (greater than 2.4 inches [6 cm]), beyond which complications may occur. Compression depth may be difficult to judge without use of feedback devices, and identification of upper limits of compression depth may be challenging. It is important for rescuers to know that the recommendation about the upper limit of compression depth is based on 1 very small study that reported an association between excessive compression depth and injuries that were not life-threatening. Most monitoring via CPR feedback devices suggests that compressions are more often too shallow than they are too deep.

Bystander Naloxone in Opioid-Associated Life-Threatening Emergencies*

2015 (New): For patients with known or suspected opioid addiction who are unresponsive with no normal breathing but a pulse, it is reasonable for appropriately trained lay rescuers and BLS providers, in addition to providing standard BLS care, to administer intramuscular (IM) or intranasal (IN) naloxone. Opioid overdose response education with or without naloxone distribution to persons at risk for opioid overdose in any setting may be considered. This topic is also addressed in the Special Circumstances of Resuscitation section.

Why: There is substantial epidemiologic data demonstrating the large burden of disease from lethal opioid overdoses, as well as some documented success in targeted national strategies for bystander-administered naloxone for people at risk. In 2014, the naloxone autoinjector was approved by the US Food and Drug Administration for use by lay rescuers and HCPs. The resuscitation training network has requested information about the best way to incorporate such a device into the adult BLS guidelines and training. This recommendation incorporates the newly approved treatment.

1.3 2015 Highlights: HCP BLS

Summary of Key Issues and Major Changes

Key issues and major changes in the 2015 Guidelines Update recommendations for HCPs include the following:

- These recommendations allow flexibility for activation of the emergency response system to better match the HCP's clinical setting.
- Trained rescuers are encouraged to simultaneously perform some steps (ie, checking for breathing and pulse at the same time), in an effort to reduce the time to first chest compression.
- Integrated teams of highly trained rescuers may use a choreographed approach that accomplishes multiple steps and assessments simultaneously rather than the sequential manner used by individual rescuers (eg, one rescuer activates the emergency response system while another begins chest compressions, a third either provides ventilation or retrieves the bag-mask device for rescue breaths, and a fourth retrieves and sets up a defibrillator).
- Increased emphasis has been placed on high-quality CPR using performance targets (compressions of adequate rate and depth, allowing complete chest recoil between compressions, minimizing interruptions in compressions, and avoiding excessive ventilation). See Table 1.
- Compression rate is modified to a range of 100 to 120/min.
- Compression depth for adults is modified to at least 2 inches (5 cm) but should not exceed 2.4 inches (6 cm).
- To allow full chest wall recoil after each compression, rescuers must avoid leaning on the chest between compressions.
- Criteria for minimizing interruptions is clarified with a goal of chest compression fraction as high as possible, with a target of at least 60%.
- Where EMS systems have adopted bundles of care involving continuous chest compressions, the use of passive ventilation techniques may be considered as part of that bundle for victims of OHCA.
- For patients with ongoing CPR and an advanced airway in place, a simplified ventilation rate of 1 breath every 6 seconds (10 breaths per minute) is recommended.

Table 1: BLS Dos and Don'ts of Adult High-Quality CPR

Open table in a [new window](#)

BLS Dos and Don'ts of Adult High-Quality CPR	
Rescuers Should	Rescuers Should <i>Not</i>
Perform chest compressions at a rate of 100-120/min	Compress at a rate slower than 100/min or faster than 120/min

Rescuers Should	Rescuers Should Not
Compress to a depth of at least 2 inches (5 cm)	Compress to a depth of less than 2 inches (5 cm) or greater than 2.4 inches (6 cm)
Allow full recoil after each compression	Lean on the chest between compressions
Minimize pauses in compressions	Interrupt compressions for greater than 10 seconds
Ventilate adequately (2 breaths after 30 compressions, each breath delivered over 1 second, each causing chest rise)	Provide excessive ventilation (ie, too many breaths or breaths with excessive force)

These changes are designed to simplify training for HCPs and to continue to emphasize the need to provide early and high-quality CPR for victims of cardiac arrest. More information about these changes follows.

In the following topics for HCPs, an asterisk (*) marks those that are similar for HCPs and lay rescuers.

Immediate Recognition and Activation of Emergency Response System

2015 (Updated): HCPs must call for nearby help upon finding the victim unresponsive, but it would be practical for an HCP to continue to assess the breathing and pulse simultaneously before fully activating the emergency response system (or calling for backup).

2010 (Old): The HCP should check for response while looking at the patient to determine if breathing is absent or not normal.

Why: The intent of the recommendation change is to minimize delay and to encourage fast, efficient simultaneous assessment and response, rather than a slow, methodical, step-by-step approach.

Emphasis on Chest Compressions*

2015 (Updated): It is reasonable for HCPs to provide chest compressions and ventilation for all adult patients in cardiac arrest, whether from a cardiac or noncardiac cause. Moreover, it is realistic for HCPs to tailor the sequence of rescue actions to the most likely cause of arrest.

2010 (Old): It is reasonable for both EMS and in-hospital professional rescuers to provide chest compressions and rescue breaths for cardiac arrest victims.

Why: Compression-only CPR is recommended for untrained rescuers because it is relatively easy for dispatchers to guide with telephone instructions. It is expected that HCPs are trained in CPR and can effectively perform both compressions and ventilation. However, the priority for the provider, especially if acting alone, should still be to activate the emergency response system and to provide chest compressions. There may be circumstances that warrant a change of sequence, such as the availability of an AED that the provider can quickly retrieve and use.

Shock First vs CPR First

2015 (Updated): For witnessed adult cardiac arrest when an AED is immediately available, it is reasonable that the defibrillator be used as soon as possible. For adults with unmonitored cardiac arrest or for whom an AED is not immediately available, it is reasonable that CPR be initiated while the defibrillator equipment is being retrieved and applied and that defibrillation, if indicated, be attempted as soon as the device is ready for use.

2010 (Old): When any rescuer witnesses an out-of-hospital arrest and an AED is immediately available on-site, the rescuer should start CPR with chest compressions and use the AED as soon as possible. HCPs who treat cardiac arrest in hospitals and other facilities with on-site AEDs or defibrillators should provide immediate CPR and should use the AED/defibrillator as soon as it is available. These recommendations are designed to support early CPR and early defibrillation, particularly when an AED or defibrillator is available within moments of the

onset of sudden cardiac arrest. When an OHCA is not witnessed by EMS personnel, EMS may initiate CPR while checking the rhythm with the AED or on the electrocardiogram (ECG) and preparing for defibrillation. In such instances, 1½ to 3 minutes of CPR may be considered before attempted defibrillation. Whenever 2 or more rescuers are present, CPR should be provided while the defibrillator is retrieved.

With in-hospital sudden cardiac arrest, there is insufficient evidence to support or refute CPR before defibrillation. However, in monitored patients, the time from ventricular fibrillation (VF) to shock delivery should be under 3 minutes, and CPR should be performed while the defibrillator is readied.

Why: While numerous studies have addressed the question of whether a benefit is conferred by providing a specified period (typically 1½ to 3 minutes) of chest compressions before shock delivery, as compared with delivering a shock as soon as the AED can be readied, no difference in outcome has been shown. CPR should be provided while the AED pads are applied and until the AED is ready to analyze the rhythm.

Chest Compression Rate: 100 to 120/min*

2015 (Updated): In adult victims of cardiac arrest, it is reasonable for rescuers to perform chest compressions at a rate of 100 to 120/min.

2010 (Old): It is reasonable for lay rescuers and HCPs to perform chest compressions at a rate of at least 100/min.

Why: The minimum recommended compression rate remains 100/min. The upper limit rate of 120/min has been added because 1 large registry series suggested that as the compression rate increases to more than 120/min, compression depth decreases in a dose-dependent manner. For example, the proportion of compressions of inadequate depth was about 35% for a compression rate of 100 to 119/min but increased to inadequate depth in 50% of compressions when the compression rate was 120 to 139/min and to inadequate depth in 70% of compressions when compression rate was more than 140/min.

Chest Compression Depth*

2015 (Updated): During manual CPR, rescuers should perform chest compressions to a depth of at least 2 inches (5 cm) for an average adult while avoiding excessive chest compression depths (greater than 2.4 inches [6 cm]).

2010 (Old): The adult sternum should be depressed at least 2 inches (5 cm).

Why: A compression depth of approximately 5 cm is associated with greater likelihood of favorable outcomes compared with shallower compressions. While there is less evidence about whether there is an upper threshold beyond which compressions may be too deep, a recent very small study suggests potential injuries (none life-threatening) from excessive chest compression depth (greater than 2.4 inches [6 cm]). Compression depth may be difficult to judge without use of feedback devices, and identification of upper limits of compression depth may be challenging. It is important for rescuers to know that chest compression depth is more often too shallow than too deep.

Chest Recoil*

2015 (Updated): It is reasonable for rescuers to avoid leaning on the chest between compressions, to allow full chest wall recoil for adults in cardiac arrest.

2010 (Old): Rescuers should allow complete recoil of the chest after each compression, to allow the heart to fill completely before the next compression.

Why: Full chest wall recoil occurs when the sternum returns to its natural or neutral position during the decompression phase of CPR. Chest wall recoil creates a relative negative intrathoracic pressure that promotes venous return and cardiopulmonary blood flow. Leaning on the chest wall between compressions precludes full chest wall recoil. Incomplete recoil raises intrathoracic pressure and reduces venous return, coronary perfusion pressure, and myocardial blood flow and can influence resuscitation outcomes.

Minimizing Interruptions in Chest Compressions*

2015 (Reaffirmation of 2010): Rescuers should attempt to minimize the frequency and duration of

interruptions in compressions to maximize the number of compressions delivered per minute.

2015 (New): For adults in cardiac arrest who receive CPR without an advanced airway, it may be reasonable to perform CPR with the goal of a chest compression fraction as high as possible, with a target of at least 60%.

Why: Interruptions in chest compressions can be intended as part of required care (ie, rhythm analysis and ventilation) or unintended (ie, rescuer distraction). Chest compression fraction is a measurement of the proportion of total resuscitation time that compressions are performed. An increase in chest compression fraction can be achieved by minimizing pauses in chest compressions. The optimal goal for chest compression fraction has not been defined. The addition of a target compression fraction is intended to limit interruptions in compressions and to maximize coronary perfusion and blood flow during CPR.

Comparison of Key Elements of Adult, Child, and Infant BLS

Table 2 lists the 2015 key elements of adult, child, and infant BLS (excluding CPR for newly born infants).

Table 2: Summary of High-Quality CPR Components for BLS Providers

Open table in a [new window](#)

Summary of High-Quality CPR Components for BLS Providers			
*Compression depth should be no more than 2.4 inches (6 cm). Abbreviations: AED, automated external defibrillator; AP, anteroposterior; CPR, cardiopulmonary resuscitation.			
Component	Adults and Adolescents	Children (Age 1 Year to Puberty)	Infants (Age Less Than 1 Year, Excluding Newborns)
Scene safety	Make sure the environment is safe for rescuers and victim		
Recognition of cardiac arrest	Check for responsiveness No breathing or only gasping (ie, no normal breathing) No definite pulse felt within 10 seconds (Breathing and pulse check can be performed simultaneously in less than 10 seconds)		
Activation of emergency response system	If you are alone with no mobile phone, leave the victim to activate the emergency response system and get the AED before beginning CPR Otherwise, send someone and begin CPR immediately; use the AED as soon as it is available	Witnessed collapse Follow steps for adults and adolescents on the left Unwitnessed collapse Give 2 minutes of CPR Leave the victim to activate the emergency response system and get the AED Return to the child or infant and resume CPR; use the AED as soon as it is available	

Component	Adults and Adolescents	Children (Age 1 Year to Puberty)	Infants (Age Less Than 1 Year, Excluding Newborns)
Compression-ventilation ratio <i>without advanced airway</i>	1 or 2 rescuers 30:2	1 rescuer 30:2 2 or more rescuers 15:2	
Compression-ventilation ratio <i>with advanced airway</i>	Continuous compressions at a rate of 100-120/min Give 1 breath every 6 seconds (10 breaths/min)		
Compression rate	100-120/min		
Compression depth	At least 2 inches (5 cm)*	At least one-third AP diameter of chest About 2 inches (5 cm)	At least one-third AP diameter of chest About 1 1/2 inches (4 cm)
Hand placement	2 hands on the lower half of the breastbone (sternum)	2 hands or 1 hand (optional for very small child) on the lower half of the breastbone (sternum)	1 rescuer 2 fingers in the center of the chest, just below the nipple line 2 or more rescuers 2 thumb-encircling hands in the center of the chest, just below the nipple line
Chest recoil	Allow full recoil of chest after each compression; do not lean on the chest after each compression		
Minimizing interruptions	Limit interruptions in chest compressions to less than 10 seconds		

Chest Compression Feedback

2015 (Updated): It may be reasonable to use audiovisual feedback devices during CPR for real-time optimization of CPR performance.

2010 (Old): New CPR prompt and feedback devices may be useful for training rescuers and as part of an overall strategy to improve the quality of CPR in actual resuscitations. Training for the complex combination of skills required to perform adequate chest compressions should focus on demonstrating mastery.

Why: Technology allows for real-time monitoring, recording, and feedback about CPR quality, including both physiologic patient parameters and rescuer performance metrics. These important data can be used in real time during resuscitation, for debriefing after resuscitation, and for system-wide quality improvement programs. Maintaining focus during CPR on the characteristics of compression rate and depth and chest recoil while minimizing interruptions is a complex challenge even for highly trained professionals. There is some evidence that the use of CPR feedback may be effective in modifying chest compression rates that are too fast, and there is separate evidence that CPR feedback decreases the leaning force during chest compressions. However, studies to date have not demonstrated a significant improvement in favorable neurologic outcome or survival to hospital discharge with the use of CPR feedback devices during actual cardiac arrest events.

Delayed Ventilation

2015 (New): For witnessed OHCA with a shockable rhythm, it may be reasonable for EMS systems with priority-based, multitiered response to delay positive-pressure ventilation (PPV) by using a strategy of up to 3 cycles of 200 continuous compressions with passive oxygen insufflation and airway adjuncts.

Why: Several EMS systems have tested a strategy of providing initial continuous chest compressions with delayed PPV for adult victims of OHCA. In all of these EMS systems, the providers received additional training with emphasis on provision of high-quality chest compressions. Three studies in systems that use priority-based, multitiered response in both urban and rural communities, and provide a bundled package of care that includes up to 3 cycles of passive oxygen insufflation, airway adjunct insertion, and 200 continuous chest compressions with interposed shocks, showed improved survival with favorable neurologic status for victims with witnessed arrest or shockable rhythm.

Ventilation During CPR With an Advanced Airway

2015 (Updated): It may be reasonable for the provider to deliver 1 breath every 6 seconds (10 breaths per minute) while continuous chest compressions are being performed (ie, during CPR with an advanced airway).

2010 (Old): When an advanced airway (ie, endotracheal tube, Combitube, or laryngeal mask airway) is in place during 2-person CPR, give 1 breath every 6 to 8 seconds without attempting to synchronize breaths between compressions (this will result in delivery of 8 to 10 breaths per minute).

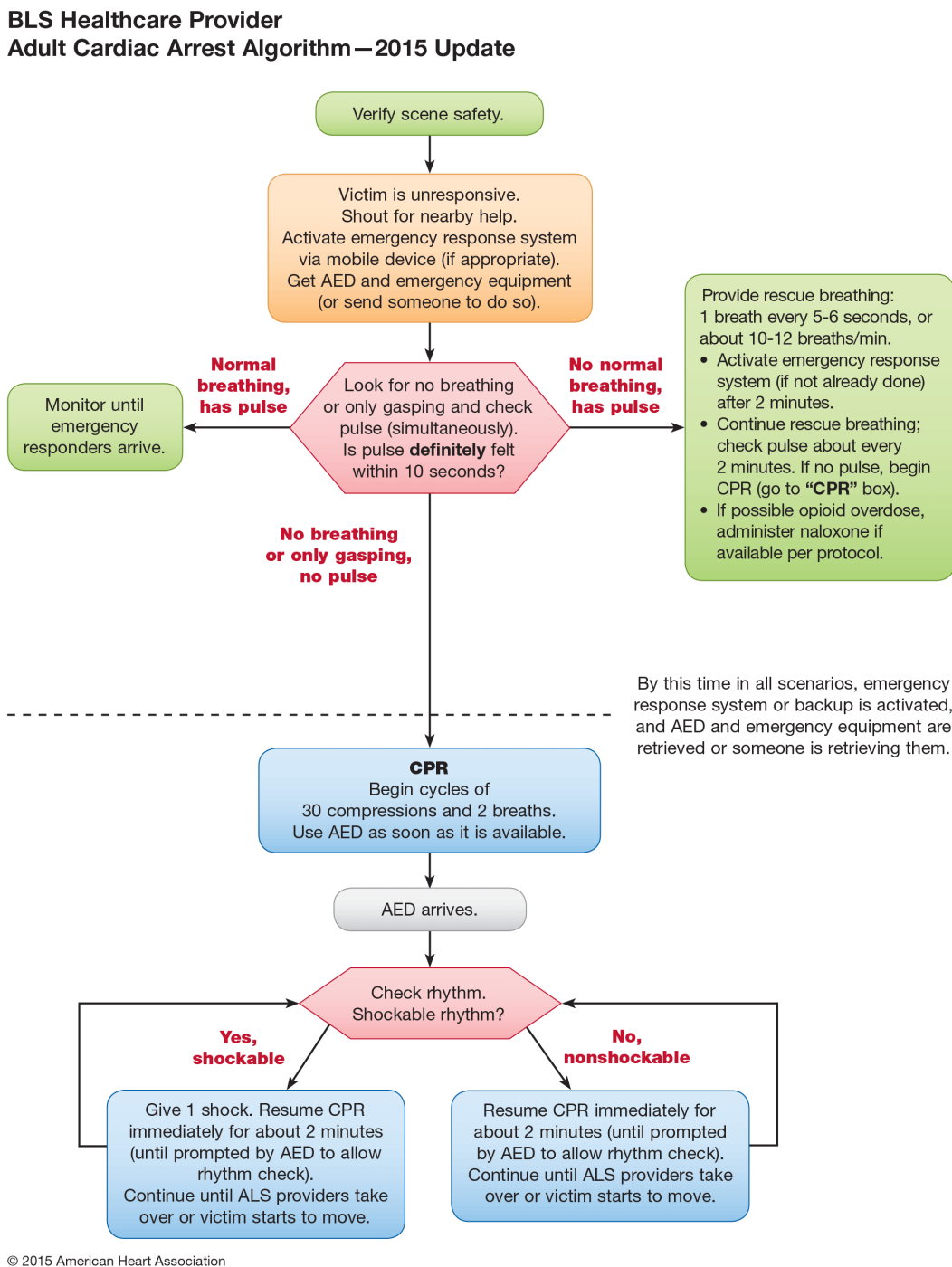
Why: This simple single rate for adults, children, and infants—rather than a range of breaths per minute—should be easier to learn, remember, and perform.

Team Resuscitation: Basic Principles

2015 (New): For HCPs, the 2015 Guidelines Update allows flexibility for activation of the emergency response and subsequent management in order to better match the provider's clinical setting (Figure 1).

Why: The steps in the BLS algorithms have traditionally been presented as a sequence in order to help a single rescuer prioritize actions. However, there are several factors in any resuscitation (eg, type of arrest, location, whether trained providers are nearby, whether the rescuer must leave a victim to activate the emergency response system) that may require modifications in the BLS sequence. The updated BLS HCP algorithms aim to communicate when and where flexibility in sequence is appropriate.

Figure 1: BLS Healthcare Provider Adult Cardiac Arrest Algorithm—2015 Update



2 Introduction

These Web-based Integrated Guidelines incorporate all relevant recommendations from 2010, 2015 and 2017.

The **2017 American Heart Association Focused Update on Adult Basic Life Support and Cardiopulmonary Resuscitation Quality** covers only those topics addressed by ILCOR’s new continuous evidence evaluation process as of 2017. The ILCOR systematic reviews use the Grading of Recommendations Assessment, Development, and Evaluation methodology and its associated nomenclature for strength of recommendation and level of evidence. The expert writing group for this adult BLS focused update reviewed the studies cited in the 2017 BLS CoSTR summary¹ and carefully considered the ILCOR consensus recommendations in light of the structure and resources of the out-of-hospital and in-hospital resuscitation systems that use AHA guidelines. In addition, the writing group determined classes of recommendation and

levels of evidence according to the most recent report by T1 the American College of Cardiology/AHA on clinical practice guidelines by using the process detailed in part 2 of the 2015 guidelines update.² All other recommendations and algorithms published in the 2015 guidelines update¹ and the 2010 guidelines⁶ remain the official recommendations of the AHA Emergency Cardiovascular Care Science Subcommittee and writing groups.

Recommendations for each topic addressed in the 2017 adult BLS focused update are classified as follows:

1. Unchanged recommendations
2. Updated recommendations (may be updated in wording, class, level of evidence, or any combination of these)

At the request of the AHA Training Network, we have also clarified the descriptions of lay rescuers as follows:

1. Untrained
2. Trained in chest compression–only CPR
3. Trained in CPR using chest compressions and ventilation (rescue breaths)

As with other Parts of the **2015 American Heart Association (AHA) Guidelines Update for Cardiopulmonary Resuscitation (CPR) and Emergency Cardiovascular Care (ECC)**, Part 5 is based on the International Liaison Committee on Resuscitation (ILCOR) 2015 international evidence review process. ILCOR Basic Life Support (BLS) Task Force members identified and prioritized topics and questions with the newest or most controversial evidence, or those that were thought to be most important for resuscitation. This 2015 Guidelines Update is based on the systematic reviews and recommendations of the [2015 International Consensus on CPR and ECC Science With Treatment Recommendations](#), “[Part 3: Adult Basic Life Support and Automated External Defibrillation](#).”^{3,4} In the online version of this document, live links are provided so the reader can connect directly to the systematic reviews on the ILCOR Scientific Evidence Evaluation and Review System (SEERS) website. These links are indicated by a combination of letters and numbers (eg, BLS 740). We encourage readers to use the links and review the evidence and appendix.

As with all AHA Guidelines, each 2015 recommendation is labeled with a Class of Recommendation (COR) and a Level of Evidence (LOE). New or updated recommendations use the newest AHA COR and LOE classification system, which contains modifications of the Class III recommendation and introduces LOE B-R (randomized studies) and B-NR (non-randomized studies) as well as LOE C-LD (based on limited data) and LOE C-EO (consensus of expert opinion).

The AHA process for identification and management of potential conflicts of interest was used, and potential conflicts for writing group members are listed at the end of each Part of the 2015 Guidelines Update. For additional information about the systematic review process or management of potential conflicts of interest, see “[Part 2: Evidence Evaluation and Management of Conflicts of Interest](#)” in the 2015 Guidelines Update and the related publication, “[Part 2: Evidence Evaluation and Management of Conflicts of Interest](#)” in the ILCOR [2015 International Consensus on CPR and ECC Science With Treatment Recommendations](#).⁵

Because the 2015 publication represents the first Guidelines Update, it includes an appendix with all the 2015 recommendations for adult BLS as well as the recommendations from the 2010 Guidelines. If the 2015 ILCOR review resulted in a new or significantly revised Guidelines recommendation, that recommendation will be labeled *New* or *Updated*.

It is important to note that the 2010 recommendations used a previous version of the AHA COR and LOE classification system that was current in 2010. Any of the 2010 algorithms that have been revised as a result of recommendations in the 2015 Guidelines Update are contained in this publication. To emphasize that the algorithm has been modified, the words *2015 Update* will appear in the title of the algorithm.

3 Adult BLS and CPR Quality Overview - Updated 2015

Sudden cardiac arrest remains a leading cause of death in the United States. Seventy percent of out-of-hospital cardiac arrests (OHCAs) occur in the home, and approximately 50% are unwitnessed. Outcome from OHCA remains poor: only 10.8% of adult patients with nontraumatic cardiac arrest who have received resuscitative efforts from emergency medical services (EMS) survive to hospital discharge.⁶ In-hospital cardiac arrest (IHCA) has a better outcome, with 22.3% to 25.5% of adults surviving to discharge.⁷

BLS is the foundation for saving lives after cardiac arrest. Fundamental aspects of adult BLS include immediate

recognition of sudden cardiac arrest and activation of the emergency response system, early CPR, and rapid defibrillation with an automated external defibrillator (AED). Initial recognition and response to heart attack and stroke are also considered part of BLS. This section presents the updated recommendations for adult BLS guidelines for lay rescuers and healthcare providers. Key changes and continued points of emphasis in this 2015 Guidelines Update include the following:

- The crucial links in the adult out-of-hospital Chain of Survival are unchanged from 2010; however, there is increased emphasis on the rapid identification of potential cardiac arrest by dispatchers, with immediate provision of CPR instructions to the caller.
- This Guidelines Update takes into consideration the ubiquitous presence of mobile phones that can allow the rescuer to activate the emergency response system without leaving the victim's side. For healthcare providers, these recommendations allow flexibility for activation of the emergency response to better match the provider's clinical setting.
- More data are available showing that high-quality CPR improves survival from cardiac arrest, including
 - Ensuring chest compressions of adequate rate
 - Ensuring chest compressions of adequate depth
 - Allowing full chest recoil between compressions
 - Minimizing interruptions in chest compressions
 - Avoiding excessive ventilation
- This Guidelines Update includes an updated recommendation for a simultaneous, choreographed approach to performance of chest compressions, airway management, rescue breathing, rhythm detection, and shocks (if indicated) by an integrated team of highly trained rescuers in applicable settings.

When the links in the Chain of Survival are implemented in an effective way, survival can approach 50% in EMS-treated patients after witnessed out-of-hospital ventricular fibrillation (VF) arrest.^{8,9} Unfortunately, survival rates in many out-of-hospital and in-hospital settings fall far short of this figure. For example, survival rates after cardiac arrest due to VF vary from approximately 5% to 50% in both out-of-hospital and in-hospital settings.¹⁰⁻¹² This variation in outcome underscores the opportunity for improvement in many settings. The remaining links in the AHA Chain of Survival, namely advanced life support and integrated postarrest care, are covered in later Parts of this 2015 Guidelines Update (see "[Part 7: Adult Advanced Cardiovascular Life Support](#)" and "[Part 8: Post-Cardiac Arrest Care](#)").

4 Adult BLS Sequence - Updated 2015

The steps of BLS consist of a series of sequential assessments and actions, which are illustrated in a simplified BLS algorithm that is unchanged from 2010.¹³ The intent of the algorithm is to present the steps of BLS in a logical and concise manner that is easy for all types of rescuers to learn, remember, and perform. Integrated teams of highly trained rescuers may use a choreographed approach that accomplishes multiple steps and assessments simultaneously rather than in the sequential manner used by individual rescuers (eg, one rescuer activates the emergency response system while another begins chest compressions, a third either provides ventilation or retrieves the bag-mask device for rescue breaths, and a fourth retrieves and sets up a defibrillator). Moreover, trained rescuers are encouraged to simultaneously perform some steps (ie, checking for breathing and pulse at the same time) in an effort to reduce the time to first compressions. BLS assessments and actions for specific types of rescuers are summarized in (Table 3).

Table 3: 2015 - Basic Life Support Sequence

Open table in a [new window](#)

Basic Life Support Sequence			
Step	Lay Rescuer Not Trained	Lay Rescuer Trained	Healthcare Provider
1	Ensure scene safety.	Ensure scene safety.	Ensure scene safety.

Step	Lay Rescuer Not Trained	Lay Rescuer Trained	Healthcare Provider
2	Check for response.	Check for response.	Check for response.
3	Shout for nearby help. Phone or ask someone to phone 9-1-1 (the phone or caller with the phone remains at the victim's side, with the phone on speaker).	Shout for nearby help and activate the emergency response system (9-1-1, emergency response). If someone responds, ensure that the phone is at the side of the victim if at all possible.	Shout for nearby help/activate the resuscitation team; can activate the resuscitation team at this time or after checking breathing and pulse.
4	Follow the dispatcher's instructions.	Check for no breathing or only gasping; if none, begin CPR with compressions.	Check for no breathing or only gasping and check pulse (ideally simultaneously). Activation and retrieval of the AED/emergency equipment by either the lone healthcare provider or by the second person sent by the rescuer must occur no later than immediately after the check for no normal breathing and no pulse identifies cardiac arrest.
5	Look for no breathing or only gasping, at the direction of the dispatcher.	Answer the dispatcher's questions, and follow the dispatcher's instructions.	Immediately begin CPR, and use the AED/defibrillator when available.
6	Follow the dispatcher's instructions.	Send the second person to retrieve an AED, if one is available.	When the second rescuer arrives, provide 2-person CPR and use AED/defibrillator.

AED indicates automated external defibrillator; and CPR, cardiopulmonary resuscitation.

4.1 Immediate Recognition and Activation of the Emergency Response System - Updated 2015 BLS 740 BLS 359

Emergency medical dispatch is an integral component of the EMS response.¹⁴ Bystanders (lay responders) should immediately call their local emergency number to initiate a response any time they find an unresponsive adult victim. Healthcare providers should call for nearby help upon finding the victim unresponsive, but it would be practical for a healthcare provider to continue to assess for breathing and pulse simultaneously before fully activating the emergency response system.

For OHCA, a recent Scientific Statement recommended that all emergency dispatchers have protocols to guide the lay rescuer to check for breathing and to perform the steps of CPR, if needed.¹⁵ When dispatchers ask bystanders to determine if breathing is present, bystanders often misinterpret agonal gasps or abnormal breathing as normal breathing. This erroneous information can result in failure by dispatchers to identify potential cardiac arrest and failure to instruct bystanders to initiate CPR immediately.¹⁶⁻²¹ An important consideration is that brief, generalized seizures may be the first manifestation of cardiac arrest.^{20,21}

4.1.1 2015 Evidence Review

Patients who are unresponsive and not breathing normally have a high likelihood of being in cardiac arrest.^{18,21-28} Dispatcher CPR instructions substantially increase the likelihood of bystander CPR performance²⁹ and

improve survival from cardiac arrest.³⁰⁻³²

4.1.2 Recommendations - Updated 2015

It is recommended that emergency dispatchers determine if a patient is unresponsive with abnormal breathing after acquiring the requisite information to determine the location of the event.

(Class I, LOE C-LD)

If the patient is unresponsive with abnormal or absent breathing, it is reasonable for the emergency dispatcher to assume that the patient is in cardiac arrest. ***(Class IIa, LOE C-LD)***

Dispatchers should be educated to identify unresponsiveness with abnormal breathing and agonal gasps across a range of clinical presentations and descriptions. ***(Class I, LOE C-LD)***

In order to increase bystander willingness to perform CPR, dispatchers should provide telephone CPR instructions to callers reporting an adult who is unresponsive and not breathing or not breathing normally (ie, only gasping). ***(Class I, LOE B)***

The EMS system quality improvement process, including review of the quality of dispatcher CPR instructions provided to specific callers, is considered an important component of a high-quality lifesaving program.³³⁻³⁵ ***(Class IIa, LOE B)***

The role of dispatcher-guided CPR and recommendations for dispatcher training are more fully described in “[Part 4: Systems of Care and Continuous Quality Improvement](#).”

4.2 Pulse Check - Updated 2015

Studies have shown that both lay rescuers and healthcare providers have difficulty detecting a pulse.³⁶⁻⁴⁵ Healthcare providers also may take too long to check for a pulse.^{39,42}

The lay rescuer should not check for a pulse and should assume that cardiac arrest is present if an adult suddenly collapses or an unresponsive victim is not breathing normally.

The healthcare provider should take no more than 10 seconds to check for a pulse and, if the rescuer does not definitely feel a pulse within that time period, the rescuer should start chest compressions.^{46,47} ***(Class IIa, LOE C)***

Ideally, the pulse check is performed simultaneously with the check for no breathing or only gasping, to minimize delay in detection of cardiac arrest and initiation of CPR. Lay rescuers will not check for a pulse.

Interruptions of chest compressions to palpate for a spontaneous pulse or to otherwise check for return of spontaneous circulation (ROSC) can compromise vital organ perfusion.^{48,49-54}

Accordingly lay rescuers should not interrupt chest compressions to palpate pulses or check for ROSC. ***(Class IIa, LOE C)***

4.3 Early CPR - Updated 2015^{BLS 661}

Begin chest compressions as quickly as possible after recognition of cardiac arrest. The 2010 Guidelines included a major change for trained rescuers, who were instructed to begin the CPR sequence with chest compressions rather than breaths (C-A-B versus A-B-C) to minimize the time to initiation of chest compressions.

The 2015 ILCOR BLS Task Force reviewed the most recent evidence evaluating the impact of this change in sequence on resuscitation.

4.3.1 2015 Evidence Review

Additional evidence published since 2010 showed that beginning the CPR sequence with compressions minimized time to first chest compression.⁵⁵⁻⁵⁷

4.3.2 Recommendation - Updated 2015

Similar to the 2010 Guidelines, it may be reasonable for rescuers to initiate CPR with chest compressions. (Class IIb, LOE C-LD)

The characteristics of effective chest compressions are described in the following section on BLS skills. As in the 2010 sequence, once chest compressions have been started, a trained rescuer delivers rescue breaths by mouth-to-mask or bag-mask device to provide oxygenation and ventilation. Recommendations regarding the duration of each breath and the need to make the chest rise were not updated in 2015.

4.4 Early Defibrillation With an AED - Updated 2015

After activating the emergency response system, the lone rescuer retrieves an AED (if nearby and easily accessible) and then returns to the victim to attach and use the AED and provide CPR. When 2 or more trained rescuers are present, 1 rescuer begins CPR, starting with chest compressions, while a second rescuer activates the emergency response system and gets the AED (or a manual defibrillator in most hospitals) and other emergency equipment. The AED or manual defibrillator is used as rapidly as possible, and both rescuers are expected to provide CPR with chest compressions and ventilation. The sequence for using an AED has not been updated from the 2010 Guidelines.

4.5 Rescuer-Specific CPR Strategies: Putting It All Together - Updated 2015 BLS 359 BLS 372

This section summarizes the sequence of CPR interventions to be performed by 3 types of prototypical rescuers after they activate the emergency response system. The specific steps for rescuers and healthcare providers (compression-only [Hands-Only™] CPR, conventional CPR with rescue breaths, and CPR with AED use) are determined by the rescuer's level of training.

4.6 Untrained Lay Rescuer - Updated 2015

Bystander CPR may prevent VF from deteriorating to asystole, and it also increases the chance of defibrillation, contributes to preservation of heart and brain function, and improves survival from OHCA.⁵⁸ Bystander CPR rates remain unacceptably low in many communities. Because compression-only CPR is easier to teach, remember, and perform, it is preferred for "just-in-time" teaching for untrained lay rescuers.

4.6.1 2015 Evidence Review

When telephone guidance is needed, survival is improved when compression-only CPR is provided as compared with conventional CPR for adult victims of cardiac arrest.⁵⁹ Multiple studies have shown no difference in survival when adult victims of OHCA receive compression-only CPR versus conventional CPR.^{30,32,60-67}

4.6.2 Recommendations - Updated 2015

Untrained lay rescuers should provide compression-only CPR, with or without dispatcher assistance. (Class I, LOE C-LD)

The rescuer should continue compression-only CPR until the arrival of an AED or rescuers with additional training. (Class I, LOE C-LD)

4.7 Trained Lay Rescuer - Updated 2015

The 2010 Guidelines recommended that trained rescuers should provide rescue breaths in addition to chest compressions because they may encounter victims with asphyxial causes of cardiac arrest or they may be providing CPR for prolonged periods of time before additional help arrives.

4.7.1 Recommendations - Updated 2015

All lay rescuers should, at a minimum, provide chest compressions for victims of cardiac arrest. (Class I, LOE C-LD) In addition, if the trained lay rescuer is able to perform rescue breaths, he or she should add rescue breaths in a ratio of 30 compressions to 2 breaths.

The rescuer should continue CPR until an AED arrives and is ready for use or EMS providers take over care of the victim. (Class I, LOE C-LD)

4.8 Healthcare Provider - Updated 2015

Optimally, all healthcare providers should be trained in BLS. As in past Guidelines, healthcare providers are trained to provide both compressions and ventilation.

4.8.1 2015 Evidence Review

There is concern that delivery of chest compressions without assisted ventilation for prolonged periods could be less effective than conventional CPR (compressions plus breaths) because the arterial oxygen content will decrease as CPR duration increases. This concern is especially pertinent in the setting of asphyxial cardiac arrest.⁶¹ For the 2015 ILCOR evidence review, the Adult BLS Task Force reviewed observational studies and randomized controlled trials (RCTs), including studies of dispatcher-guided CPR; much of the research involved patients whose arrests were presumed to be of cardiac origin and in settings with short EMS response times. It is likely that a time threshold exists beyond which the absence of ventilation may be harmful,^{60,62} and the generalizability of the findings to all settings must be considered with caution.

4.8.2 Recommendation - Updated 2015

It is reasonable for healthcare providers to provide chest compressions and ventilation for all adult patients in cardiac arrest, from either a cardiac or noncardiac cause. (Class IIa, LOE C-LD)

In addition, it is realistic for healthcare providers to tailor the sequence of rescue actions to the most likely cause of arrest. For example, if a lone healthcare provider sees an adolescent suddenly collapse, the provider may assume that the victim has had a sudden arrhythmic arrest and call for help, get a nearby AED, return to the victim to use the AED, and then provide CPR.

The related 2010 recommendation is as follows:

If a lone healthcare provider aids an adult drowning victim or a victim of foreign body airway obstruction who becomes unconscious, the healthcare provider may give about 5 cycles (approximately 2 minutes) of CPR before activating the emergency response system. (Class IIa, LOE C)

4.9 Delayed Ventilation - Updated 2015^{BLS 360}

Several EMS systems have tested a strategy of initial continuous chest compressions with delayed positive-pressure ventilation for adult OHCA.

4.9.1 2015 Evidence Review

During adult OHCA, survival to hospital discharge was improved by the use of an initial period of continuous chest compressions.^{68,69} Three observational studies showed improved survival with favorable neurologic status when EMS providers performed a set of continuous chest compressions with delayed ventilation for victims with witnessed arrest or shockable rhythm.⁷⁰⁻⁷² These studies were performed in systems that use

priority-based, multitiered response in both urban and rural communities, and all included a “bundled” package of care that included up to 3 cycles of passive oxygen insufflation, airway adjunct insertion, and 200 continuous chest compressions with interposed shocks. Providers received additional training with emphasis on provision of high-quality chest compressions.

4.9.2 Recommendation - New 2015

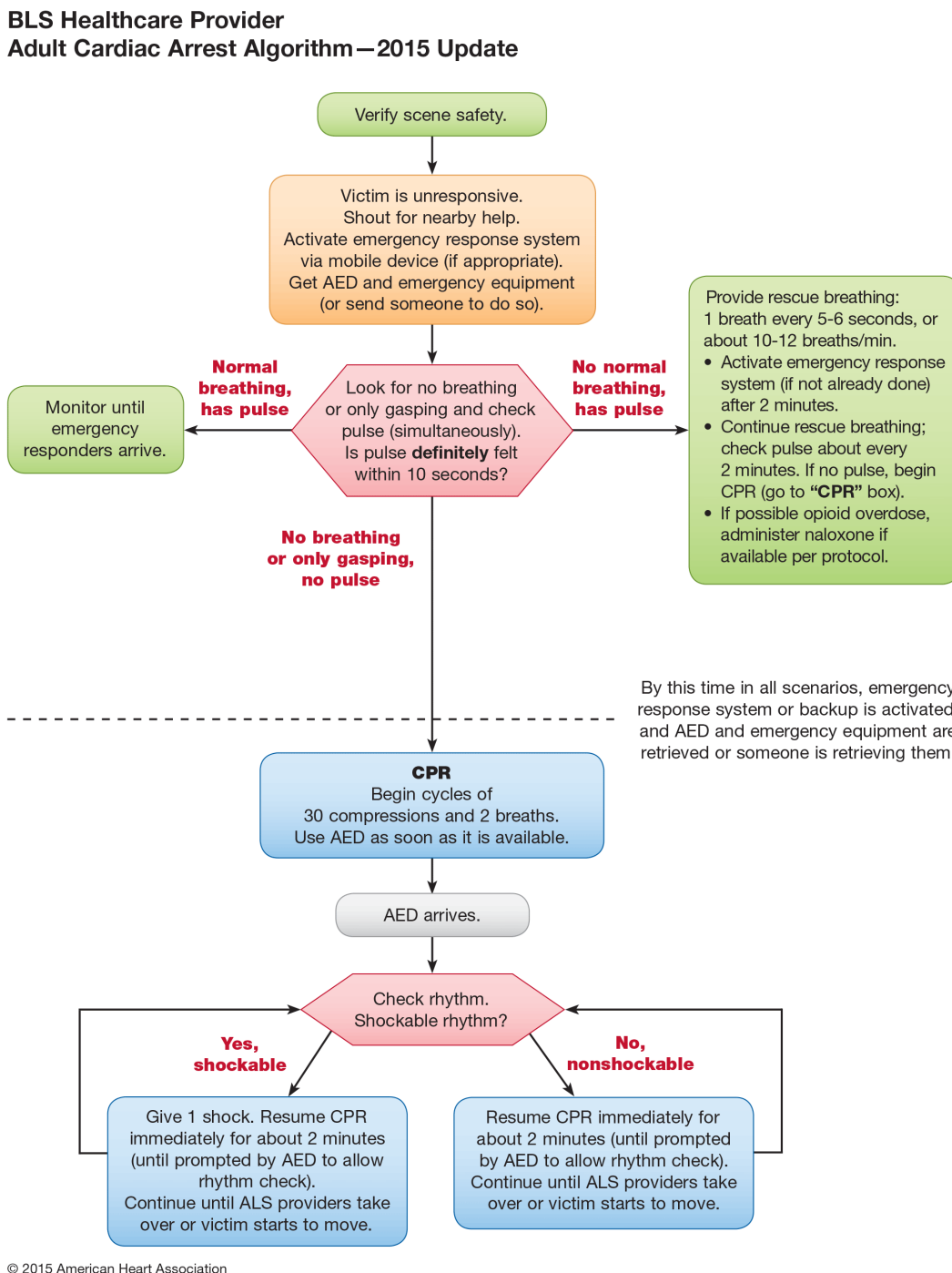
For witnessed OHCA with a shockable rhythm, it may be reasonable for EMS systems with priority-based, multitiered response to delay positive-pressure ventilation by using a strategy of up to 3 cycles of 200 continuous compressions with passive oxygen insufflation and airway adjuncts.

(Class IIb, LOE C-LD)

5 Adult BLS Skills - Updated 2015 | 2017

The sequence of BLS skills for the healthcare provider is depicted in the BLS Healthcare Provider Adult Cardiac Arrest Algorithm (Figure 1). There are minor changes to the 2010 Guidelines as the result of new evidence regarding compression rate, feedback received from the training network, and new evidence regarding the incidence of opioid overdose and the effects of naloxone-administration programs.

Figure 1: BLS Healthcare Provider Adult Cardiac Arrest Algorithm—2015 Update



5.1 Verify Scene Safety - Updated 2015

Rescuers arriving on the scene of an emergency should verify that the environment in which they are approaching a patient is safe for the provider. This is accomplished by a quick scan of the patient’s location and surroundings to make sure there are no imminent physical threats such as toxic or electrical hazards.

Because of the difficulty in providing effective chest compressions while moving the patient during CPR, the resuscitation should generally be conducted where the patient is found. (Class IIa, LOE C)

This may not be possible if the environment is dangerous.

5.2 Recognition of Arrest - Updated 2015 BLS 359 BLS 740

The necessary first step in the treatment of cardiac arrest is immediate recognition. Initial major steps for bystanders remain unchanged from the 2010 Guidelines and are provided below. CPR training, both formal classroom training and “just-in-time” training such as that given through a dispatch center, should emphasize how to recognize occasional gasps.

Dispatchers should instruct rescuers to provide CPR if the victim is unresponsive with no normal breathing, even when the victim demonstrates occasional gasps. (Class I, LOE C-LD)

The 2010 Guidelines are as follows:

Bystanders may witness the sudden collapse of a victim or find someone who appears lifeless. At that time several steps should be initiated. Before approaching a victim, the rescuer must ensure that the scene is safe and then check for response. To do this, tap the victim on the shoulder and shout, “Are you all right?” If the victim is responsive he or she will answer, move, or moan. If the victim remains unresponsive, the lay rescuer should activate the emergency response system.

When phoning 911 for help, the rescuer should be prepared to answer the dispatcher’s questions about the location of the incident, the events of the incident, the number and condition of the victim(s), and the type of aid provided. If rescuers never learned or have forgotten how to do CPR, they should also be prepared to follow the dispatcher’s instructions. Finally the rescuer making the phone call should hang up only when instructed to do so by the dispatcher.

After activation of the emergency response system, all rescuers should immediately begin CPR (see steps below) for adult victims who are unresponsive with no breathing or no normal breathing (only gasping).

Professional as well as lay rescuers may be unable to accurately determine the presence or absence of adequate or normal breathing in unresponsive victims^{36,73} because the airway is not open⁷⁴ or because the victim has occasional gasps, which can occur in the first minutes after SCA and may be confused with adequate breathing. Occasional gasps do not necessarily result in adequate ventilation.

Studies have shown that both laypersons and healthcare providers have difficulty detecting a pulse.³⁶⁻⁴⁵ For this reason pulse check was deleted from training for lay rescuers several years ago, and is deemphasized in training for healthcare providers. The lay rescuer should assume that cardiac arrest is present and should begin CPR if an adult suddenly collapses or an unresponsive victim is not breathing or not breathing normally (ie, only gasping).

Healthcare providers may take too long to check for a pulse^{39,42,46} and have difficulty determining if a pulse is present or absent.^{39,42,46} There is no evidence, however, that checking for breathing, coughing, or movement is superior for detection of circulation.⁷⁵

The four related 2010 recommendations are as follows:

The rescuer should treat the victim who has occasional gasps as if he or she is not breathing. (Class I, LOE C)

If the victim also has absent or abnormal breathing (ie, only gasping), the rescuer should assume the victim is in cardiac arrest.^{76,77,78} (Class I, LOE C)

The health care provider should also check for no breathing or no normal breathing (ie, only gasping) while checking for responsiveness; if the healthcare provider finds the victim is unresponsive with no breathing or no normal breathing (ie, only gasping), the rescuer should assume the victim is in cardiac arrest and immediately activate the emergency response system.^{76,77,78} (Class I, LOE C)

Because delays in chest compressions should be minimized, the healthcare provider should take no more than 10 seconds to check for a pulse; and if the rescuer does not definitely feel a pulse within that time period the rescuer should start chest compressions. (Class IIa, LOE C)

5.2.1 Scenario: Pulse Present, Normal Breathing - Updated 2015

Closely monitor the patient, and activate the emergency response system as indicated by location and patient condition.

5.2.2 Scenario: Pulse Present, No Normal Breathing - Updated 2015 BLS 811 BLS 891

This topic was last reviewed in 2010. The 2015 ILCOR systematic review addressed whether bystander-administered naloxone to patients with suspected opioid-associated cardio-pulmonary arrest affected resuscitation outcomes. The evaluation did not focus on opioid-associated respiratory arrest.

The authors acknowledge the epidemiologic data demonstrating the large burden of disease from lethal opioid overdoses as well as targeted national strategies for bystander-administered naloxone for people at risk. Since the 2014 US Food and Drug Administration approval of the use of a naloxone autoinjector by lay rescuers and healthcare providers,⁷⁹ the training network has requested information regarding the best way to incorporate such a device in the BLS sequence. In response to requests, the ILCOR BLS Task Force performed an additional search for evidence of effectiveness of the use of naloxone for opioid overdose.

5.2.2.1 2015 Summary of Evidence

There were no published studies to determine if adding intranasal or intramuscular naloxone to conventional CPR is superior to conventional CPR alone for the management of adults and children with suspected opioid-associated cardiac or respiratory arrest in the prehospital setting. However, the additional search for available evidence regarding overdose education and naloxone distribution programs yielded 3 observational before-and-after studies. One study observed a dose-response effect with 0.73 (95% confidence interval [CI], 0.57–0.91) and 0.54 (95% CI, 0.39–0.76) adjusted rate ratios for lethal overdose in communities with low and high implementation, respectively.⁸⁰ The remaining 2 observational studies reported reductions in rate ratios for lethal overdose of 0.62 (95% CI, 0.54–0.72)⁸¹ and 0.70 (95% CI, 0.65–0.74) in individual communities that implemented programs to address opioid overdose.⁸²

5.2.2.2 Recommendations - New 2015

For a patient with known or suspected opioid overdose who has a definite pulse but no normal breathing or only gasping (ie, a respiratory arrest), in addition to providing standard BLS care, it is reasonable for appropriately trained BLS healthcare providers to administer intramuscular or intranasal naloxone. (Class IIa, LOE C-LD)

For patients in cardiac arrest, medication administration is ineffective without concomitant chest compressions for drug delivery to the tissues, so naloxone administration may be considered after initiation of CPR if there is high suspicion for opiate overdose. (Class IIb, LOE C-EO)

It is reasonable to provide opioid overdose response education with or without naloxone distribution to persons at risk for opioid overdose (or those living with or in frequent contact with such persons). (Class IIa, LOE C-LD)

Information regarding lay rescuer education and the use of naloxone for known or suspected victims of opioid overdose is discussed in [“Part 10: Special Circumstances of Resuscitation.”](#)

5.2.3 Scenario: Pulse Absent, No Breathing or Only Gasping - Updated 2015

As in the 2010 Guidelines, rescuers should initiate CPR and use an AED as soon as possible. By this point in all potential scenarios, the emergency response system is activated, and a defibrillator and emergency equipment

are retrieved or requested.

5.3 Technique: Chest Compressions - Updated 2015

Chest compressions are the key component of effective CPR. Chest compressions consist of forceful rhythmic applications of pressure over the lower half of the sternum. These compressions create blood flow by increasing intrathoracic pressure and directly compressing the heart. This generates blood flow and oxygen delivery to the myocardium and brain.

Characteristics of chest compressions include their depth, rate, and degree of recoil. The quality of CPR can also be characterized by the frequency and duration of interruptions in chest compressions—when such interruptions are minimized, the chest compression fraction (percent of total resuscitation time that compressions are performed) is higher. Finally, with high-quality CPR, the rescuer avoids excessive ventilation. These CPR performance elements affect intrathoracic pressure, coronary perfusion pressure, cardiac output, and, in turn, clinical outcomes.

***Effective chest compressions are essential for providing blood flow during CPR. For this reason all patients in cardiac arrest should receive chest compressions.*⁸³⁻⁸⁷ (Class I, LOE B)**

5.3.1 Hand Position During Compressions - Updated 2015^{BLS 357}

The 2015 ILCOR systematic review addressed whether hand position placement for chest compressions affected resuscitation outcomes. Different rescuer hand positions alter the mechanics of chest compressions and may, in turn, influence their quality and effectiveness.

5.3.1.1 2015 Summary of Evidence

Only a few human studies involving a total of fewer than 100 cardiac arrest patients have evaluated hand position during CPR.⁸⁸⁻⁹⁰ These investigations assessed hand placement on the lower third of the sternum compared with the center of the chest in a crossover design, and they measured physiologic endpoints, such as blood pressure and end-tidal carbon dioxide (ETCO₂). The studies have not provided conclusive or consistent results about the effects of hand placement on resuscitation outcomes.

5.3.1.2 Recommendation - Reviewed 2015

***Consistent with the 2010 Guidelines, it is reasonable to position hands for chest compressions on the lower half of the sternum in adults with cardiac arrest.* (Class IIa, LOE C-LD)**

The full 2010 recommendation is as follows.

***The rescuer should place the heel of one hand on the center (middle) of the victim's chest (which is the lower half of the sternum) and the heel of the other hand on top of the first so that the hands are overlapped and parallel.*⁹¹⁻⁹⁴ (Class IIa, LOE B)**

5.3.2 Chest Compression Rate - Updated 2015^{BLS 343}

In the 2010 Guidelines, the recommended compression rate was *at least* 100 compressions per minute. The 2015 Guidelines Update incorporates new evidence about the potential for an upper threshold of rate beyond which outcome may be adversely affected.

The 2015 ILCOR systematic review addressed whether compression rates different from 100/min influence physiologic or clinical outcomes. Chest compression rate is defined as the actual rate used during each continuous period of chest compressions. This rate differs from the number of chest compressions delivered per unit of time, which takes into account any interruptions in chest compressions.

5.3.2.1 2015 Summary of Evidence

Evidence involving compression rate is derived from observational human studies that evaluate the relationship

between compression rate and outcomes including survival to hospital discharge, return of spontaneous circulation (ROSC), and various physiologic measures, such as blood pressure and end-tidal CO₂. These investigations suggest that there may be an optimal zone for the rate of manual chest compressions—between 100/min and 120/min—that on average is associated with improved survival.^{95,96} Importantly, there is an interdependent relationship between compression rate and compression depth during manual chest compressions: as rate increases to greater than 120/min, depth decreases in a dose-dependent manner.⁹⁵ For example, the proportion of compressions less than 38 mm (less than 3.8 cm or 1.5 inches) was about 35% for a compression rate of 100 to 119/min but increased to 50% for a compression rate of 120 to 139/min and 70% for a compression rate of greater than 140/min.

5.3.2.2 Recommendation - Updated 2015

In adult victims of cardiac arrest, it is reasonable for rescuers to perform chest compressions at a rate of 100/min to 120/min. (Class IIa, LOE C-LD)

5.3.3 Chest Compression Depth - Updated 2015^{BLS 366}

The 2015 ILCOR systematic review addressed whether a chest compression depth different from 2 inches (5 cm) influences physiologic or clinical outcomes. The depth of chest compression can affect the relative increase in intrathoracic pressure and, in turn, influence forward blood flow from the heart and great vessels to the systemic circulation. In the 2010 Guidelines, the recommended compression depth was *at least* 2 inches (5 cm). The 2015 Guidelines Update incorporates new evidence about the potential for an upper threshold of compression depth beyond which outcomes may be adversely affected.

5.3.3.1 2015 Summary of Evidence

Evidence involving compression depth is derived from observational human studies that evaluate the relationship between compression depth and outcomes including survival with favorable neurologic outcome, survival to hospital discharge, and ROSC. Studies often classify compression depth differently, using distinct categories of depth or using an average depth for a given portion of the resuscitation.

Even with this heterogeneity, there is consistent evidence that achieving compression depth of approximately 5 cm is associated with greater likelihood of favorable outcomes compared with shallower compressions.⁹⁷⁻¹⁰⁵ In the largest study to date (n=9136), the optimal compression depth with regard to survival occurred within the range of 41 to 55 mm (4.1 to 5.5 cm, or 1.61 to 2.2 inches).¹⁰⁰ Less evidence is available about whether there is an upper threshold beyond which compressions may be too deep. During manual CPR, injuries are more common when compression depth is greater than 6 cm (2.4 inches) than when it is between 5 and 6 cm (2 and 2.4 inches).¹⁰⁶ Importantly, chest compressions performed by professional rescuers are more likely to be too shallow (ie, less than 40 mm [4 cm] or 1.6 inches) and less likely to exceed 55 mm (5.5 cm or 2.2 inches).¹⁰⁰

5.3.3.2 Recommendation - Updated 2015

During manual CPR, rescuers should perform chest compressions to a depth of at least 2 inches or 5 cm for an average adult, while avoiding excessive chest compression depths (greater than 2.4 inches or 6 cm). (Class I, LOE C-LD)

Additionally, the 2010 Guidelines further specified that chest compressions should be performed with chest compression and chest recoil/relaxation times approximately equal.^{107,108} (Class IIb, LOE C)

5.3.4 Chest Wall Recoil - Updated 2015^{BLS 367}

The 2015 ILCOR systematic reviews addressed whether full chest wall recoil compared with incomplete recoil influenced physiologic or clinical outcomes. Full chest wall recoil occurs when the sternum returns to its natural or neutral position during the decompression phase of CPR. Chest wall recoil creates a relative negative intrathoracic pressure that promotes venous return and cardiopulmonary blood flow. Leaning on the chest wall between compressions precludes full chest wall recoil. Incomplete recoil could increase intrathoracic pressure and reduce venous return, coronary perfusion pressure, and myocardial blood flow and could potentially

influence resuscitation outcomes.^{109,110} Observational studies indicate that leaning is common during CPR in adults and children.^{111,112}

5.3.4.1 2015 Summary of Evidence

There are no human studies reporting the relationship between chest wall recoil and clinical outcomes. The evidence is derived from 2 animal studies and a pediatric study of patients not in cardiac arrest.^{109,113,114} In all 3 studies, an increased force of leaning (incomplete recoil) was associated with a dose-dependent decrease in coronary perfusion pressure. Based on 2 studies, the relationship between leaning and cardiac output was inconsistent.^{109,113}

5.3.4.2 Recommendation - Updated 2015

It is reasonable for rescuers to avoid leaning on the chest between compressions to allow full chest wall recoil for adults in cardiac arrest. (Class IIa, LOE C-LD)

5.4 Minimizing Interruptions in Chest Compressions - Updated 2015^{BLS 358}

As in the 2010 Guidelines, minimizing interruptions in chest compressions remains a point of emphasis. The 2015 ILCOR systematic review addressed whether shorter compared with longer interruptions in chest compressions influenced physiologic or clinical outcomes. Interruptions in chest compressions can be intended as part of required care (ie, rhythm analysis and ventilation) or unintended (ie, rescuer distraction).

Chest compression fraction is a measurement of the proportion of time that compressions are performed during a cardiac arrest. An increase in chest compression fraction can be achieved by minimizing pauses in chest compressions. The optimal goal for chest compression fraction has not been defined. The AHA expert consensus is that a chest compression fraction of 80% is achievable in a variety of settings.¹¹⁵

5.4.1 2015 Summary of Evidence

Evidence involving the consequences of compression interruptions is derived from observational and randomized human studies of cardiac arrest. These studies provide heterogeneous results. Observational studies demonstrate an association between a shorter duration of compression interruption for the perishock period and a greater likelihood of shock success,¹⁰² ROSC,¹¹⁶ and survival to hospital discharge.^{117,118} Other observational studies have demonstrated an association between higher chest compression fraction and likelihood of survival among patients with shockable rhythms, and return of circulation among patients with nonshockable rhythms.^{119,120} In contrast, the results of a randomized trial comparing a bundle of changes between the 2000 and 2005 Guidelines showed no survival difference when perishock pauses were reduced.¹²¹ In an investigation of first responders equipped with AEDs, the duration of pauses specific to ventilation was not associated with survival.¹²²

5.4.2 Recommendations - Updated 2015

In adult cardiac arrest, total pre-shock and post-shock pauses in chest compressions should be as short as possible. (Class I, LOE C-LD)

For adults in cardiac arrest receiving CPR without an advanced airway, it is reasonable to pause compressions for less than 10 seconds to deliver 2 breaths. (Class IIa, LOE C-LD)

In adult cardiac arrest with an unprotected airway, it may be reasonable to perform CPR with the goal of a chest compression fraction as high as possible, with a target of at least 60%. (Class IIb, LOE C-LD)

5.4.3 Rescuer Fatigue

The 2010 Guidelines provided specific guidance for switching compressors:

Rescuer fatigue may lead to inadequate compression rates or depth.¹²³⁻¹²⁵ Significant fatigue and shallow

compressions are common after 1 minute of CPR, although rescuers may not recognize that fatigue is present for 75 minutes.¹²⁴

When 2 or more rescuers are available it is reasonable to switch chest compressors approximately every 2 minutes (or after about 5 cycles of compressions and ventilations at a ratio of 30:2) to prevent decreases in the quality of compressions. (Class IIa, LOE B)

Consider switching compressors during any intervention associated with appropriate interruptions in chest compressions (eg, when an AED is delivering a shock). Every effort should be made to accomplish this switch in <5 seconds. If the 2 rescuers are positioned on either side of the patient, 1 rescuer will be ready and waiting to relieve the “working compressor” every 2 minutes.

5.5 Compression-to-Ventilation Ratio - Reviewed 2017^{BLS 362}

In 2005, the recommended compression-to-ventilation ratio for adults in cardiac arrest was changed from 15:2 to 30:2. The 2015 ILCOR systematic review addressed whether compression-to-ventilation ratios different from 30:2 influenced physiologic or clinical outcomes. In cardiac arrest patients without an advanced airway, chest compressions are briefly paused to provide rescue breaths in order to achieve adequate air entry.

The 2017 BLS CoSTR summary¹ and systematic review considered the compression-to-ventilation ratio for adult BLS.

No new studies were reviewed for this topic in 2017.

5.5.1 2015 Summary of Evidence

Evidence involving the compression-to-ventilation ratio is derived from observational before-and-after human studies in the out-of-hospital setting.¹²⁶⁻¹²⁹ These studies compared the compression-to-ventilation ratio of 30:2 with 15:2 for survival and other outcomes. However, the treatment of the comparison groups also differed in other respects that typically reflected changes from the 2000 to 2005 Guidelines, such as an increase in the duration of CPR cycles between rhythm analyses from 1 to 2 minutes. Overall, outcomes were typically better in the 30:2 group compared with the 15:2 group.

5.5.2 Recommendation - Updated 2017

This recommendation is consistent with the 2010 and 2015 Guidelines and has been updated for clarity.

It is reasonable for rescuers trained in CPR using chest compressions and ventilation (rescue breaths) to provide a compression-to-ventilation ratio of 30:2 for adults in cardiac arrest. (Class IIa; LOE C-LD)

5.6 Dispatch-Assisted CPR - Updated 2017^{BLS 372}

The 2017 BLS CoSTR summary¹ and systematic review considered instructions for dispatch-assisted chest compression only CPR for out-of-hospital cardiac arrest (OHCA).

No new studies were reviewed for this topic in 2017.

5.6.1 2015 Summary of Evidence

Evidence comparing layperson compression-only CPR with conventional CPR is derived from RCTs of dispatcher-guided CPR and observational studies. There were no short-term survival differences in any of the 3 individual randomized trials comparing the 2 types of dispatcher instructions.^{30,32,130} Based on meta-analysis of the 2 largest randomized trials (total n=2496), dispatcher instruction in compression-only CPR was associated with long-term survival benefit compared with instruction in chest compressions and rescue breathing.⁵⁹ Among the observational studies, survival outcomes were not different when comparing the 2 types of CPR.^{60-67,131-135}

5.6.2 Recommendations - Updated 2017

This recommendation is consistent with the 2010 and 2015 guidelines and has been updated for clarity.

We recommend that when dispatchers' instructions are needed, dispatchers should provide chest compression–only CPR instructions to callers for adults with suspected OHCA. (Class I; LOE C-LD)

5.7 Bystander CPR - Updated 2017 BLS 372

The 2017 BLS CoSTR summary¹ and systematic review compared bystander use of chest compression–only CPR with CPR using chest compressions and ventilation (rescue breaths).

5.7.1 2017 Summary of Evidence

Iwami et al¹³⁶ examined the influence of Japan's nationwide dissemination of recommendations for continuous chest compression CPR for lay rescuers, including dispatcher-assisted CPR, at a time when CPR guidelines recommended compressions plus ventilation (rescue breaths) at a ratio of 30 compressions to 2 breaths. The unadjusted analysis showed that nationwide the intervention was associated with improved bystander CPR rates and increased survival. However, in an unadjusted analysis of crude data, patients receiving continuous chest compressions had a lower rate of return of spontaneous circulation (odds ratio, 0.80; 95% confidence interval [CI], 0.78–0.82), worse 1-month survival (odds ratio, 0.75; 95% CI, 0.73–0.78), and worse 1-month survival with good neurological outcomes (odds ratio, 0.72; 95% CI, 0.69–0.76) compared with those receiving CPR using a ratio of 30 compressions to 2 breaths.

5.7.2 Recommendations - Updated 2017

These three updated recommendations clarify the previous recommendations based on the the lay rescuer's level of training.

For adults in OHCA, untrained lay rescuers should provide chest compression–only CPR with or without dispatcher assistance. (Class I; LOE C-LD)

For lay rescuers trained in chest compression–only CPR, we recommend they provide chest compression–only CPR for adults in OHCA. (Class I; LOE C-LD)

For lay rescuers trained in CPR using chest compressions and ventilation (rescue breaths), it is reasonable to provide ventilation (rescue breaths) in addition to chest compressions for the adult in OHCA. (Class IIa; LOE C-LD)

5.8 Managing the Airway - Updated 2015 | 2017

A significant change in the 2010 Guidelines was the initiation of chest compressions before ventilation (ie, a change in the sequence from A-B-C to C-A-B). The prioritization of circulation (C) over ventilation reflected the overriding importance of blood flow generation for successful resuscitation and practical delays inherent to initiation of rescue breaths (B). Physiologically, in cases of sudden cardiac arrest, the need for assisted ventilation is a lower priority because of the availability of adequate arterial oxygen content at the time of a sudden cardiac arrest. The presence of this oxygen and its renewal through gasping and chest compressions (provided there is a patent airway) also supported the use of compression-only CPR and the use of passive oxygen delivery.

5.8.1 Open the Airway: Lay Rescuer - Updated 2015 FA 772

The recommendation for trained and untrained lay rescuers remains the same as in 2010.

For victims with suspected spinal injury, rescuers should initially use manual spinal motion restriction (eg, placing 1 hand on either side of the patient's head to hold it still) rather than immobilization devices, because use of immobilization devices by lay rescuers may be harmful. (Class III: Harm, LOE C-LD)

Spinal immobilization devices may interfere with maintaining a patent airway,^{137,138} but ultimately the use of such a device may be necessary to maintain spinal alignment during transport. This treatment recommendation is explored in depth in "[Part 15: First Aid.](#)"

The trained lay rescuer who feels confident that he or she can perform both compressions and ventilations should open the airway using a head tilt–chin lift maneuver. (Class IIa, LOE B)

For the rescuer providing Hands-Only CPR, there is insufficient evidence to recommend the use of any specific passive airway (such as hyperextending the neck to allow passive ventilation).

5.8.2 Open the Airway: Healthcare Provider - Updated 2015

A healthcare provider uses the head tilt–chin lift maneuver to open the airway of a victim with no evidence of head or neck trauma. The evidence for this was last reviewed in 2010. For victims with suspected spinal cord injury, this evidence was last reviewed in 2010 and there is no change in treatment recommendation.

A healthcare provider should use the head tilt–chin lift maneuver to open the airway of a victim with no evidence of head or neck trauma.

Although the head tilt–chin lift technique was developed using unconscious, paralyzed adult volunteers and has not been studied in victims with cardiac arrest, clinical¹³⁹ and radiographic evidence^{140, 141} and a case series¹⁴² have shown it to be effective. (Class IIa, LOE B)

Between 0.12 and 3.7% of victims with blunt trauma have a spinal injury,¹⁴³⁻¹⁴⁵ and the risk of spinal injury is increased if the victim has a craniofacial injury,^{146,147} a Glasgow Coma Scale score of <8,^{148, 149} or both.^{147, 148}

If healthcare providers suspect a cervical spine injury, they should open the airway using a jaw thrust without head extension.¹⁴² (Class IIb, LOE C)

Because maintaining a patent airway and providing adequate ventilation are priorities in CPR (Class I, LOE C), use the head tilt–chin lift maneuver if the jaw thrust does not adequately open the airway.

5.8.3 Rescue Breathing - Updated 2017

The 2015 Guidelines Update makes many of the same recommendations regarding rescue breathing as were made in 2005 and 2010. Effective performance of rescue breathing or bag-mask or bag-tube ventilation is an essential skill and requires training and practice. During CPR without an advanced airway, a compression-to-ventilation ratio of 30:2 is used.

Deliver each rescue breath over 1 second. (Class IIa, LOE C)

Give a sufficient tidal volume to produce visible chest rise.¹⁵⁰ (Class IIa, LOE C)

Studies in anesthetized adults (with normal perfusion) suggest that a tidal volume of 8 to 10 mL/kg maintains

normal oxygenation and elimination of CO₂. During CPR, cardiac output is 25% to 33% of normal, so oxygen uptake from the lungs and CO₂ delivery to the lungs are also reduced. As a result, a low minute ventilation (lower than normal tidal volume and respiratory rate) can maintain effective oxygenation and ventilation.^{150,151,152,153}

For that reason during adult CPR tidal volumes of approximately 500 to 600 mL (6 to 7 mL/kg) should suffice.¹⁵⁴⁻¹⁵⁶ **(Class IIa, LOE B)**

This is consistent with a tidal volume that produces visible chest rise.

Patients with airway obstruction or poor lung compliance may require high pressures to be properly ventilated (to make the chest visibly rise). A pressure-relief valve on a resuscitation bag-mask may prevent the delivery of a sufficient tidal volume in these patients.¹⁵⁷ Ensure that the bag-mask device allows you to bypass the pressure-relief valve and use high pressures, if necessary, to achieve visible chest expansion.¹⁵⁸

Excessive ventilation is unnecessary and can cause gastric inflation and its resultant complications, such as regurgitation and aspiration.¹⁵⁹⁻¹⁶¹ **(Class III, LOE B)**

More important, excessive ventilation can be harmful because it increases intrathoracic pressure, decreases venous return to the heart, and diminishes cardiac output and survival.¹⁶¹

In summary, rescuers should avoid excessive ventilation (too many breaths or too large a volume) during CPR. **(Class III, LOE B)**

During CPR the primary purpose of assisted ventilation is to maintain adequate oxygenation; the secondary purpose is to eliminate CO₂. However, the optimal inspired oxygen concentration, tidal volume and respiratory rate to achieve those purposes are not known. As noted above, during the first minutes of sudden VF cardiac arrest, rescue breaths are not as important as chest compressions^{162,163,164} because the oxygen content in the noncirculating arterial blood remains unchanged until CPR is started; the blood oxygen content then continues to be adequate during the first several minutes of CPR. In addition, attempts to open the airway and give rescue breaths (or to access and set up airway equipment) may delay the initiation of chest compressions.¹⁶⁵ These issues support the CAB approach of the *2010 AHA Guidelines for CPR and ECC* (ie, starting with **C**hest Compressions prior to **A**irway and **B**reathing).

For victims of prolonged cardiac arrest both ventilations and compressions are important because over time oxygen in the blood is consumed and oxygen in the lungs is depleted (although the precise time course is unknown). Ventilations and compressions are also important for victims of asphyxial arrest, such as children and drowning victims, because they are hypoxemic at the time of cardiac arrest.^{166,167}

5.8.3.1 Mouth-to-Mouth Rescue Breathing

The technique for mouth-to-mouth rescue breathing was last reviewed in 2010.¹³

Mouth-to-mouth rescue breathing provides oxygen and ventilation to the victim.¹⁶⁸ To provide mouth-to-mouth rescue breaths, open the victim's airway, pinch the victim's nose, and create an airtight mouth-to-mouth seal.

Give 1 breath over 1 second, take a "regular" (not a deep) breath, and give a second rescue breath over 1 second. **(Class IIb, LOE C)**

Taking a regular rather than a deep breath prevents the rescuer from getting dizzy or lightheaded and prevents overinflation of the victim's lungs. The most common cause of ventilation difficulty is an improperly opened airway,⁷⁴ so if the victim's chest does not rise with the first rescue breath, reposition the head by performing the head tilt–chin lift again and then give the second rescue breath.

If an adult victim with spontaneous circulation (ie, strong and easily palpable pulses) requires support of ventilation, the healthcare provider should give rescue breaths at a rate of about 1 breath every 5 to 6 seconds, or about 10 to 12 breaths per minute. (Class IIb, LOE C)

Each breath should be given over 1 second regardless of whether an advanced airway is in place. Each breath should cause visible chest rise.

5.8.3.2 Mouth-to-Barrier Device Breathing

The technique for mouth-to-barrier device breathing was last reviewed in 2010.¹³

Some healthcare providers¹⁶⁹⁻¹⁷¹ and lay rescuers state that they may hesitate to give mouth-to-mouth rescue breathing and prefer to use a barrier device. The risk of disease transmission through mouth to mouth ventilation is very low, and it is reasonable to initiate rescue breathing with or without a barrier device. When using a barrier device the rescuer should not delay chest compressions while setting up the device.

5.8.3.3 Mouth-to-Nose and Mouth-to-Stoma Ventilation

The technique for mouth-to-nose and mouth-to-stoma ventilation was last reviewed in 2010.¹³

Mouth-to-nose ventilation is recommended if ventilation through the victim's mouth is impossible (eg, the mouth is seriously injured), the mouth cannot be opened, the victim is in water, or a mouth-to-mouth seal is difficult to achieve. (Class IIa, LOE C)

A case series suggests that mouth-to-nose ventilation in adults is feasible, safe, and effective.¹⁷² Give mouth-to-stoma rescue breaths to a victim with a tracheal stoma who requires rescue breathing.

A reasonable alternative is to create a tight seal over the stoma with a round, pediatric face mask. (Class IIb, LOE C)

There is no published evidence on the safety, effectiveness, or feasibility of mouth-to-stoma ventilation. One study of patients with laryngectomies showed that a pediatric face mask created a better peristomal seal than a standard ventilation mask.¹⁷³

5.8.3.4 Ventilation with Bag-Mask Device Before Placement of an Advance Airway - Updated 2017

The 2017 BLS CoSTR summary¹ and systematic review considered the use of interrupted versus continuous chest compressions when EMS providers performed CPR using chest compressions and ventilation before placement of an advanced airway.

When using a self-inflating bag, rescuers can provide bag-mask ventilation with room air or oxygen. A bag-mask device can provide positive-pressure ventilation without an advanced airway and may result in gastric inflation and its potential complications.

The elements of a bag-mask device are the same as those used in 2010.¹³

A bag-mask device should have the following¹⁷⁴: a nonjam inlet valve; either no pressure relief valve or a pressure relief valve that can be bypassed; standard 15-mm/22-mm fittings; an oxygen reservoir to allow delivery of high oxygen concentrations; a nonbreathing outlet valve that cannot be obstructed by foreign material and will not jam with an oxygen flow of 30 L/min; and the capability to function satisfactorily under common environmental conditions and extremes of temperature.

Masks should be made of transparent material to allow detection of regurgitation. They should be capable of creating a tight seal on the face, covering both mouth and nose. Masks should be fitted with an oxygen (insufflation) inlet and have a standard 15-mm/22-mm connector.¹⁷⁵ They should be available in one adult and several pediatric sizes.

5.8.3.4.1 2017 Evidence Summary

The Resuscitation Outcomes Consortium conducted a cluster-randomized crossover trial of adults with EMS-treated nontraumatic, nonasphyxial cardiac arrest.¹⁷⁶ All patients received positive-pressure ventilation during CPR before placement of an advanced airway (supraglottic airway or tracheal tube). In the intervention group, chest compressions were provided continuously and ventilation was delivered asynchronously at a rate of 10 breaths per minute without pausing chest compressions. In the control group, chest compressions were interrupted for ventilation at a ratio of 30 compressions to 2 breaths. The study analyzed 23 711 adults with cardiac arrest using a primary outcome of survival to hospital discharge. Overall, there was no significant difference in outcome between patients in the intervention group and those in the control group, with survival to discharge of 9.0% and 9.7%, respectively (adjusted difference, ?0.7; 95% CI, ?1.5 to 0.1; P=0.07). Likewise, there was no difference in survival with good neurological outcome (7.0% versus 7.7%; adjusted difference, ?0.6; 95% CI, ?1.4 to 0.1; P=0.09).

5.8.3.4.2 Recommendations - Updated 2017

Bag-mask ventilation is a challenging skill that requires considerable practice for competency.^{177,178} Bag-mask ventilation is not the recommended method of ventilation for a lone rescuer during CPR. It is most effective when provided by 2 trained and experienced rescuers. One rescuer opens the airway and seals the mask to the face while the other squeezes the bag. Both rescuers watch for visible chest rise.^{177,179}

The rescuer should use an adult (1 to 2 L) bag to deliver approximately 600 mL tidal volume¹⁸⁰⁻¹⁸² for adult victims. This amount is usually sufficient to produce visible chest rise and maintain oxygenation and normocarbida in apneic patients.¹⁵⁴⁻¹⁵⁶ (Class IIa, LOE C)

If the airway is open and a good, tight seal is established between face and mask, this volume can be delivered by squeezing a 1-L adult bag about two thirds of its volume or a 2-L adult bag about one third of its volume.

The healthcare provider should use supplementary oxygen (O₂ concentration >40%, at a minimum flow rate of 10 to 12 L/min) when available.

We recommend that before placement of an advanced airway (supraglottic airway or tracheal tube), EMS providers perform CPR with cycles of 30 compressions and 2 breaths. (Class IIa, LOE B-R)

As an alternative, it is reasonable for EMS providers to perform CPR in cycles of 30 compressions with 2 breaths without interrupting chest compressions to give breaths. (Class IIa, LOE B-R)

It may be reasonable for EMS providers to use a rate of 10 breaths per min (1 breath every 6 s) to provide asynchronous ventilation during continuous chest compressions before placement of an advanced airway. (Class IIb; LOE C-LD)

These updated recommendations do not preclude the 2015 recommendation below, which has been updated with current terminology.

A reasonable alternative for EMS systems that have adopted bundles of care is the initial use of minimally interrupted chest compressions (ie, delayed ventilation) for witnessed shockable OHCA. (Class IIb; LOE C-LD)

5.8.3.5 Ventilation with an Advanced Airway - Updated 2017^{BLS 808}

The 2017 BLS CoSTR summary¹ and systematic review considered the use of continuous versus interrupted chest compressions after placement of an advanced airway in the hospital setting.

No new studies were reviewed for this topic in 2017.

5.8.3.5.1 Recommendations - Updated 2017

As stated in 2010, Supraglottic airway devices such as the LMA, the esophageal-tracheal combitube and the King airway device, are currently within the scope of BLS practice in a number of regions (with specific authorization from medical control).

Ventilation with a bag through these devices provides an acceptable alternative to bag-mask ventilation for well-trained healthcare providers who have sufficient experience to use the devices for airway management during cardiac arrest.¹⁸³⁻¹⁸⁸ ***(Class IIa, LOE B)***

It is not clear that these devices are any more or less complicated to use than a bag and mask; training is needed for safe and effective use of both the bag-mask device and each of the advanced airways. These devices are discussed in greater detail in [Part 7: Adult Advanced Cardiovascular Life Support](#) of the Web-based Integrated Guidelines.

Whenever an advanced airway (tracheal tube or supraglottic device) is inserted during CPR, it may be reasonable for providers to perform continuous compressions with positive-pressure ventilation delivered without pausing chest compressions. ***(Class IIb; LOE C-LD)***

After placement of an advanced airway, it may be reasonable for the provider to deliver 1 breath every 6 s (10 breaths per min) while continuous chest compressions are being performed. ***(Class IIb; LOE C-LD)***

5.8.4 Passive Oxygen Versus Positive-Pressure Oxygen During CPR - Updated 2017^{BLS 352}

Some EMS systems have studied the use of passive oxygen flow during chest compressions without positive-pressure ventilation, an option known as passive oxygen administration.

5.8.4.1 2015 Evidence Summary

Two studies compared positive-pressure ventilation through an endotracheal tube to continuous delivery of oxygen or air directly into the trachea after intubation by using a modified endotracheal tube that had microcannulas inserted into its inner wall.^{189,190} A third study compared bag-mask ventilation to high-flow oxygen delivery by nonrebreather face mask after oropharyngeal airway insertion as part of a resuscitation bundle that also included uninterrupted pre-shock and post-shock chest compressions and early epinephrine administration.⁷⁰ Continuous tracheal delivery of oxygen or air through the modified endotracheal tube was associated with lower arterial PCO₂¹⁸⁹ but no additional improvement in ROSC,^{189,190} hospital admission,¹⁹⁰ or ICU discharge¹⁹⁰ when compared with positive-pressure ventilation. High-flow oxygen delivery via a face mask with an oropharyngeal airway as part of a resuscitation bundle was associated with improved survival with favorable neurologic outcome. This study, however, included only victims who had witnessed arrest from VF or pulseless ventricular tachycardia (pVT).⁷⁰

5.8.4.2 Recommendations - Updated 2017

We do not recommend the routine use of passive ventilation techniques during conventional CPR for adults. ***(Class IIb, LOE C-LD)***

However, as stated in 2015, in EMS systems that use bundles of care involving continuous chest compressions, the use of passive ventilation techniques may be considered as part of that bundle. This recommendation has been updated with current terminology below.

A reasonable alternative for EMS systems that have adopted bundles of care is the initial use of minimally interrupted chest compressions (ie, delayed ventilation) for witnessed shockable OHCA. (Class IIb; LOE C-LD)

5.8.5 Cricoid Pressure

Cricoid pressure is a technique of applying pressure to the victim's cricoid cartilage to push the trachea posteriorly and compress the esophagus against the cervical vertebrae. Cricoid pressure can prevent gastric inflation and reduce the risk of regurgitation and aspiration during bag-mask ventilation, but it may also impede ventilation. Seven randomized, controlled studies demonstrated that cricoid pressure can delay or prevent the placement of an advanced airway and that aspiration can occur despite application of pressure.¹⁹¹⁻¹⁹⁷ Additional manikin studies¹⁹⁸⁻²¹¹ found training in the maneuver to be difficult for both expert and nonexpert rescuers. Neither expert nor nonexpert rescuers demonstrated mastery of the technique, and the applied pressure was frequently inconsistent and outside of effective limits. Cricoid pressure might be used in a few special circumstances (eg, to aid in viewing the vocal cords during tracheal intubation).

However, the routine use of cricoid pressure in adult cardiac arrest is not recommended. (Class III, LOE B)

6 AED Defibrillation - Updated 2015

Ideally, all BLS providers are trained on use of an AED given that VF and pVT are treatable cardiac arrest rhythms with outcomes closely related to the rapidity of recognition and treatment.²¹² Survival in victims of VF/pVT is highest when bystanders deliver CPR and defibrillation is attempted within 3 to 5 minutes of collapse.^{11,58,213-216} Accordingly, in 2010, we recommended that BLS providers immediately apply an AED in witnessed OHCA or for monitored patients who develop IHCA. In 2015, the review focused on (1) the evidence surrounding the clinical benefit of automatic external defibrillators in the out-of-hospital setting by laypeople and healthcare providers, and (2) the complex choreography of care needed to ensure high-quality CPR and effective defibrillation.

The 2010 Guidelines are as follows:

Rapid defibrillation is the treatment of choice for VF of short duration, such as for victims of witnessed out-of-hospital cardiac arrest or for hospitalized patients whose heart rhythm is monitored. (Class I, LOE A)

There is insufficient evidence to recommend for or against delaying defibrillation to provide a period of CPR for patients in VF/pulseless VT out-of-hospital cardiac arrest. In settings with lay rescuer AED programs (AED onsite and available) and for in-hospital environments, or if the EMS rescuer witnesses the collapse, the rescuer should use the defibrillator as soon as it is available. (Class IIa, LOE C)

6.1 CPR Before Defibrillation - Updated 2015^{BLS 363}

The 2015 ILCOR systematic review addressed whether a specified period (typically 1.5 to 3 minutes) of chest compressions before shock delivery compared with a short period of chest compressions before shock delivery affected resuscitation outcomes. When cardiac arrest is unwitnessed, experts have debated whether a period of CPR might be beneficial before attempting defibrillation, especially in the out-of-hospital setting when access to defibrillation may be delayed until arrival of professional rescuers. Observational clinical studies and mechanistic studies in animal models suggest that CPR under conditions of prolonged untreated VF might help restore metabolic conditions of the heart favorable to defibrillation. Others have suggested that prolonged VF is energetically detrimental to the ischemic heart, justifying rapid defibrillation attempts regardless of the duration of arrest.

6.1.1 2015 Evidence Summary

Five RCTs,²¹⁷⁻²²¹ 4 observational cohort studies,²²²⁻²²⁵ 3 meta-analyses,²²⁶⁻²²⁸ and 1 subgroup analysis of

an RCT²²⁹ addressed the question of CPR before defibrillation. The duration of CPR before defibrillation ranged from 90 to 180 seconds, with the control group having a shorter CPR interval lasting only as long as the time required for defibrillator deployment, pad placement, initial rhythm analysis, and AED charging. These studies showed that outcomes were not different when CPR was provided for a period of up to 180 seconds before attempted defibrillation compared with rhythm analysis and attempted defibrillation first for the various outcomes examined, ranging from 1-year survival with favorable neurologic outcome to ROSC. Subgroup analysis suggested potential benefit from CPR before defibrillation in patients with prolonged EMS response intervals (4 to 5 minutes or longer)²¹⁷ and in EMS agencies with high baseline survival to hospital discharge,²²⁹ but these findings conflict with other subset analyses.²²⁰ Accordingly, the current evidence suggests that for unmonitored patients with cardiac arrest outside of the hospital and an initial rhythm of VF or pVT, there is no benefit from a period of CPR of 90 to 180 seconds before attempted defibrillation.

6.1.2 Recommendations - Updated 2015

For witnessed adult cardiac arrest when an AED is immediately available, it is reasonable that the defibrillator be used as soon as possible. (Class IIa, LOE C-LD)

For adults with unmonitored cardiac arrest or for whom an AED is not immediately available, it is reasonable that CPR be initiated while the defibrillator equipment is being retrieved and applied and that defibrillation, if indicated, be attempted as soon as the device is ready for use. (Class IIa, LOE B-R)

Additional guidance is given for either situation in the 2010 Guidelines recommendations where 2 or more rescuers are present:

When 2 or more rescuers are present, one rescuer should begin chest compressions while a second rescuer activates the emergency response system and gets the AED (or a manual defibrillator in most hospitals). (Class IIa, LOE C)

6.2 Analysis of Rhythm During Compressions - Updated 2015^{BLS 373}

The 2015 ILCOR systematic review addressed whether analysis of cardiac rhythm during chest compressions compared with analysis of cardiac rhythm during pauses in chest compressions affected resuscitation outcomes.

Although the performance of chest compressions during AED rhythm analysis would reduce the time that CPR is paused, motion artifacts currently preclude reliable AED assessment of heart rhythm during chest compressions and may delay VF/pVT identification and defibrillation.

6.2.1 2015 Evidence Summary

There are currently no published human studies that address whether compressions during manual defibrillator or AED rhythm analysis affect patient outcome. New technology to assess the potential benefit of filtering electrocardiogram (ECG) compression artifacts has not been evaluated in humans.

6.2.2 Recommendation - New 2015

There is insufficient evidence to recommend the use of artifact-filtering algorithms for analysis of ECG rhythm during CPR. Their use may be considered as part of a research protocol or if an EMS system, hospital, or other entity has already incorporated ECG artifact-filtering algorithms in its resuscitation protocols. (Class IIb, LOE C-EO)

6.3 Timing of Rhythm Check - Updated 2015^{BLS 346}

The 2015 ILCOR evidence review process considered whether the assessment of rhythm immediately after shock delivery, as opposed to immediate resumption of chest compressions, affected resuscitation outcomes. In 2010, the Guidelines emphasized the importance of avoiding pauses in cardiac compressions during CPR. Assessment of rhythm after shock delivery lengthens the period of time that chest compressions are not

delivered.

6.3.1 2015 Evidence Summary

Three before-and-after observational studies of OHCA^{69,72,230} evaluated the impact of omitting a rhythm check immediately after attempted defibrillation as part of a bundle of interventions to minimize pauses in chest compressions (eg, elimination of 3 stacked shocks and postshock rhythm and pulse checks). The observational studies documented improved survival with favorable neurologic outcome at hospital discharge associated with the bundle of care, including resumption of chest compressions immediately after shock delivery. One RCT¹²¹ comparing immediate postshock CPR to rhythm checks failed to demonstrate improved ROSC or survival to hospital admission or discharge. One small, low-quality RCT evaluated the ability to identify recurrence of VF and showed no benefit to checking rhythm immediately after defibrillation.²³¹

6.3.2 Recommendation - Updated 2015

It may be reasonable to immediately resume chest compressions after shock delivery for adults in cardiac arrest in any setting. (Class IIb, LOE C-LD)

7 CPR Quality, Accountability, and Healthcare Systems - Updated 2015

The quality of CPR in both in-hospital and OHCA events is variable. CPR quality encompasses the traditional metrics of chest compression rate and depth and chest recoil, but it also includes parameters such as chest compression fraction and avoiding excessive ventilation. Other important aspects of CPR quality include resuscitation team dynamics, system performance, and quality monitoring.

Today, despite clear evidence that providing high-quality CPR significantly improves cardiac resuscitation outcomes, few healthcare organizations consistently apply strategies of systematically monitoring CPR quality.²³² As a consequence, there is an unacceptable disparity in the quality of resuscitation care and outcomes, as well an enormous opportunity to save more lives.⁹⁹

Like other urgent healthcare conditions, the use of a relatively simple, iterative continuous quality improvement approach to CPR can dramatically improve CPR quality and optimize outcomes.²³³⁻²³⁵ Similar to successful approaches toward mitigating medical errors, programs aimed at system-wide CPR data collection, implementation of best practices, and continuous feedback on performance have been shown to be effective.¹¹⁵

7.1 Chest Compression Feedback - Updated 2015^{BLS 361}

Technology allows for real-time monitoring, recording, and feedback about CPR quality, including both physiologic patient parameters and rescuer performance metrics. This important data can be used in real time during resuscitation, for debriefing after resuscitation, and for system-wide quality improvement programs.¹¹⁵

7.1.1 2015 Evidence Review

In studies to date, the use of CPR feedback devices has not been shown to significantly improve performance of chest compression depth, chest compression fraction, and ventilation rate.^{98,101,105,236-238} There is some evidence that the use of CPR feedback may be effective in modifying chest compression rates that are too fast.^{101,237} Additionally, there is evidence that CPR feedback decreases the leaning force during chest compressions.¹¹² For the outcome of ROSC, there is conflicting evidence,^{101,105,236,237,239-241} with the majority of studies showing no difference in the number of patients that achieved ROSC and only 2 studies showing an increase in ROSC with the use of CPR feedback.^{98,105,238,241} However, studies to date have not demonstrated a significant improvement in favorable neurologic outcome^{98,237,238,241} or survival to hospital discharge^{98,101,236-238,241} related to the use of CPR feedback devices during actual cardiac arrest events.

7.1.2 Recommendation - Updated 2015

It may be reasonable to use audiovisual feedback devices during CPR for real-time optimization of CPR performance. (Class IIb, LOE B-R)

7.2 Team-Based Resuscitation - Updated 2015

Resuscitation from cardiac arrest most often involves a team of caregivers, with team composition and level of experience varying depending on location (in-versus out-of-hospital), setting (field, emergency department, hospital ward), and circumstances. Despite the varied environments and team members, a designated team leader is needed to direct and coordinate all components of the resuscitation with a central focus on delivering high-quality CPR. The team leader choreographs team activities with an aim to minimize interruptions in CPR and, through the use of real-time feedback, ensures delivery of adequate compression rate and depth, minimization of leaning, and interruptions in chest compressions, and avoidance of excessive ventilation.¹¹⁵ More information on team training is available in "[Part 14: Education](#)" and "[Part 4: Systems of Care and Continuous Quality Improvement](#)."

7.3 Duration of Resuscitation - Updated 2015

Investigators have published relatively few studies that examine the impact of resuscitation duration on clinical outcomes, and most of these studies have important limitations. In an older series of 313 IHCA patients, the percentage who survived to discharge was 45% when resuscitation lasted less than 5 minutes and less than 5% when the resuscitation extended beyond 20 minutes.²⁴² More recently, an analysis from a single-hospital registry in Taiwan suggested that the rate of achieving ROSC was higher than 90% among patients resuscitated for less than 10 minutes but approximately 50% for those resuscitated for 30 minutes or more.²⁴³

Two observational cohort studies of patients with in-hospital arrests from the Get With The Guidelines®-Resuscitation registry were recently published suggesting that extending the duration of resuscitation efforts may result in improved cardiac arrest survival. For adult patients, hospitals that systematically practiced longer durations of resuscitation had improved outcomes of ROSC and survival to discharge, with no apparent detriment in neurologic outcomes.²⁴⁴ Another report of pediatric patients demonstrated an intact survival of 16.2% after more than 35 minutes of CPR in certain patient populations.²⁴⁵ While investigators can define neither an optimal duration of resuscitation before the termination of efforts nor which patients may benefit from prolonged efforts at resuscitation, extending the duration of resuscitation may be a means of improving survival in selected hospitalized patients.

For information on ethical implications on termination of resuscitative efforts see [Part 3: Ethical Issues](#).

7.4 CPR Registry Data - Updated 2015

Ideally, RCTs will be used to advance the science and practice of resuscitation. However, conducting clinical trials in cardiac arrest patients is exceedingly challenging, given the small number of patients at single-center sites. Moreover, such research confers unique limitations and ethical concerns. Given these challenges, real-world observational data from registries can be a valuable resource for studying and reporting resuscitation processes and outcomes. Registries are available for both in-hospital and out-of-hospital arrests.²⁴⁶

Formerly known as the National Registry of Cardiopulmonary Resuscitation, the AHA's Get With The Guidelines-Resuscitation registry is the largest prospective, multicenter, observational registry of IHCA.^{247,248} At present, more than 600 hospitals in the United States and Canada participate in the registry, and more than 200 000 index arrests have been recorded since 2000.

To date, the Get With The Guidelines-Resuscitation registry has provided important insights into several aspects of IHCA. Recent work has highlighted the survival gains by reducing time to defibrillation,²⁴⁹ reducing racial differences and trends in IHCA incidence and survival,²⁵⁰ and gathering evidence to support lengthier durations of CPR.²⁵¹

The Resuscitation Outcomes Consortium (ROC) is a clinical research network designed to evaluate the effectiveness of prehospital emergency care for patients with OHCA or life-threatening injury.²⁵² Data collection began in 2007 and stems from 264 EMS agencies in 11 sites (8 in the United States and 3 in Canada), altogether representing 10% of the North American population. The ROC has afforded insights on several aspects of OHCA,²⁵³⁻²⁵⁵ including regional variation in incidence and outcomes¹⁰ and chest compression rates.⁹⁶

The Cardiac Arrest Registry to Enhance Survival (CARES) is a central repository of OHCA events of presumed cardiac etiology treated with CPR and/or defibrillation throughout the United States.^{6,256,257} CARES was designed as a quality improvement project, with the aims of providing performance indicators to EMS medical

and administrative directors to improve processes and outcomes. As of 2011, it has collected data on more than 31 000 OHCA from 46 EMS agencies in 36 communities in 20 states.²⁵⁸ CARES has offered important insight into bystander CPR,²⁵⁹ prehospital termination of resuscitation,²⁶⁰ and variation in EMS systems of care.²⁶¹

8 Family Presence During Resuscitation - Updated 2015

Studies that explicitly examined the association between family presence and outcomes have shown mixed results. In an analysis of simulated resuscitations in an urban emergency department, investigators demonstrated that family presence may have a significant effect on physicians' ability to perform critical interventions as well as on resuscitation-based performance outcomes.²⁶² Specifically, the presence of a witness to resuscitation was associated with longer mean times to defibrillation (2.6 versus 1.7 minutes) and fewer shocks (4.0 versus 6.0).

A recent observational study using the Get With The Guidelines-Resuscitation registry demonstrated that implementing a hospital policy that allows family presence had no impact on survival or the processes of attempted resuscitations.²⁶³ Overall, given the evidence for improved psychological benefits for families present during out-of-hospital resuscitation, and without an apparent negative effect on outcomes at hospitals that allow families to be present, family presence represents an important dimension in the paradigm of resuscitation quality.

9 Recovery Position

The recovery position is used for unresponsive adult victims who clearly have normal breathing and effective circulation. This position is designed to maintain a patent airway and reduce the risk of airway obstruction and aspiration. The victim is placed on his or her side with the lower arm in front of the body.

There are several variations of the recovery position, each with its own advantages. No single position is perfect for all victims.^{264,265}

The position should be stable, near a true lateral position, with the head dependent and with no pressure on the chest to impair breathing. (Class IIa, LOE C)

Studies in normal volunteers²⁶⁶ show that extending the lower arm above the head and rolling the head onto the arm, while bending both legs, may be feasible for victims with known or suspected spinal injury.²⁶⁷

10 Special Resuscitation Situations - Updated 2015

10.1 Acute Coronary Syndrome - Updated 2015

Acute coronary syndrome (ACS) is a term that subtends a spectrum of diseases leading to myocardial ischemia or infarction. The subtypes of ACS are principally stratified through a combination of electrocardiographic changes and/ or the elevations of cardiac biomarkers, in the context of symptoms consistent with ACS (eg, substernal chest pain or discomfort with or without characteristic radiation, shortness of breath, weakness, diaphoresis, nausea or vomiting, light-headedness). ACS may manifest as an ST-segment elevation myocardial infarction (STEMI) or non-ST-segment elevation myocardial infarction (NSTEMI)/unstable angina (UA), now called *non-ST-segment acute coronary syndromes* (NSTEMI-ACS). Both diagnoses are pathophysiologically linked to varying degrees of a reduction in coronary blood flow due to atherosclerotic plaque progression, instability, or rupture with or without luminal thrombosis and vasospasm.

Since 2010, the American College of Cardiology and the AHA have published targeted clinical practice guidelines pertaining to the management of patients with [STEMI](#)²⁶⁸ and [NSTEMI-ACS](#).²⁶⁹ These guidelines should be referred to for full details on the specific management of ACS. In addition, other parts of the *2015 AHA Guidelines Update for CPR and ECC* include updates on basic and advanced life support for prehospital providers who care for these patients ("[Part 9: Acute Coronary Syndromes](#)," "[Part 4: Systems of Care and Continuous Quality Improvement](#)," and "[Part 10: Special Circumstances of Resuscitation](#)"; aspirin and chest pain are presented in "[Part 15: First Aid](#)").

The 2010 Guidelines are as follows:

In the United States coronary heart disease was responsible for 1 of every 6 hospital admissions in 2005 and 1

in every 6 deaths in 2006.²⁷⁰ The American Heart Association estimates that in 2010, 785 000 Americans will have a new coronary attack and 470 000 will have a recurrent attack.²⁷⁰ Approximately 70% of deaths from acute myocardial infarction (AMI) occur outside of the hospital, most within the first 4 hours after the onset of symptoms.^{270,271}

Early recognition, diagnosis, and treatment of AMI can improve outcome by limiting damage to the heart,²⁷² but treatment is most effective if provided within a few hours of the onset of symptoms.²⁷³ Patients at risk for acute coronary syndromes (ACS) and their families should be taught to recognize the symptoms of ACS and to immediately activate the EMS system when symptoms appear, rather than delaying care by contacting family, calling a physician, or driving themselves to the hospital.

The classic symptoms associated with ACS are chest discomfort, discomfort in other areas of the upper body, shortness of breath, sweating, nausea, and lightheadedness. The symptoms of AMI characteristically last more than 15 minutes. Atypical symptoms of ACS may be more common in the elderly, women, and diabetic patients, but any patient may present with atypical signs and symptoms.²⁷⁴⁻²⁷⁶ Signs and symptoms cannot be used to confirm or exclude the diagnosis of ACS because reported sensitivity ranges from 35% to 92% and specificity ranges from 28% to 91%. Numerous studies do not support the use of any clinical signs and symptoms independent of electrocardiograph (ECG) tracings, cardiac biomarkers, or other diagnostic tests to rule in or rule out ACS in prehospital or emergency department (ED) settings.²⁷⁷⁻²⁹⁰

To improve ACS outcome, all dispatchers and EMS providers must be trained to recognize ACS symptoms, even if atypical.

It is reasonable for dispatchers to advise patients with potential cardiac symptoms to chew an aspirin (160 to 325 mg), providing the patient has no history of aspirin allergy and no signs of active or recent gastrointestinal bleeding.²⁹¹⁻²⁹⁵ ***(Class IIa, LOE C)***

EMS providers should obtain a 12-lead ECG, determine onset of ACS symptoms, and provide prearrival notification to the destination hospital.^{291,296} Clinical trials have shown improved outcomes in ST-segment elevation myocardial infarction (STEMI) patients transported by EMS directly to a percutaneous coronary intervention (PCI)–capable hospital.²⁹⁷⁻²⁹⁹

If the patient has a STEMI on ECG and if PCI is the chosen method of reperfusion, it is reasonable to transport the patient directly to a PCI facility, bypassing closer emergency departments as necessary, in systems where time intervals between first medical contact and balloon times are less than 90 minutes, and transport times are relatively short (ie, less than 30 minutes), or based on regional EMS protocols.
(Class IIa, LOE B)

Common practice has been for basic EMT's to administer oxygen during the initial assessment of patients with suspected ACS. However, there is insufficient evidence to 'support or refute oxygen use in uncomplicated ACS.

If the patient is dyspneic, hypoxemic, has obvious signs of heart failure, or an oxyhemoglobin saturation <94%, providers should administer oxygen and titrate therapy to provide the lowest administered oxygen concentration that will maintain the oxyhemoglobin saturation ≥94%.³⁰⁰ ***(Class I, LOE C)***

If the patient has not taken aspirin and has no history of aspirin allergy and no evidence of recent gastrointestinal bleeding, EMS providers should give the patient nonenteric aspirin (160 to 325 mg) to chew.^{291,296,301,302} ***(Class I, LOE C)***

EMS providers can administer nitroglycerin for patients with chest discomfort and suspected ACS.

Although it is reasonable to consider the early administration of nitroglycerin in select hemodynamically stable patients, insufficient evidence exists to support or refute the routine administration of

***nitroglycerin in the ED or prehospital setting in patients with a suspected ACS.*³⁰³⁻³⁰⁵ [\(Class IIb, LOE B\)](#)**

Nitrates in all forms are contraindicated in patients with initial systolic blood pressure <90 mm Hg or ?30 mm Hg below baseline and in patients with right ventricular infarction ([see Part 10](#)). Caution is advised in patients with known inferior wall STEMI, and a right-sided ECG should be performed to evaluate right ventricular infarction. Administer nitrates with extreme caution, if at all, to patients with inferior STEMI and suspected RV involvement because these patients require adequate RV preload. Nitrates are contraindicated when patients have taken a phosphodiesterase-5 (PDE-5) inhibitor within 24 hours (48 hours for tadalafil).

***For patients diagnosed with STEMI in the prehospital setting, EMS providers should administer appropriate analgesics, such as intravenous morphine, for persistent chest pain.* [\(Class IIa, LOE C\)](#)**

***EMS providers may consider administering intravenous morphine for undifferentiated chest pain unresponsive to nitroglycerin.* [\(Class IIb, LOE C\)](#)**

However, morphine should be used with caution in unstable angina (UA)/NSTEMI due to an association with increased mortality in a large registry.

10.2 Stroke - Updated 2015

Approximately 800 000 people have a stroke each year in the United States, and stroke is a leading cause of severe, long-term disability and death.⁷ Fibrinolytic therapy administered within the first hours of the onset of symptoms limits neurologic injury and improves outcome in selected patients with acute ischemic stroke. Effective therapy requires early detection of the signs of stroke; prompt activation of the EMS system and dispatch of EMS personnel; appropriate triage to a stroke center; prearrival notification; rapid triage, evaluation, and management in the emergency department; and prompt delivery of fibrinolytic therapy to eligible patients. Since 2010, the AHA and the American Stroke Association have published [clinical practice guidelines](#) pertaining to the early management of patients with acute ischemic stroke.^{306,307}

The 2010 CPR & ECC Guidelines are included below, but please view [Guidelines for the Early Management of Patients With Acute Ischemic Stroke](#) on Circulation to see the most current recommendations.

Patients at high risk for stroke, their family members, and BLS providers should learn to recognize the signs and symptoms of stroke and to call EMS as soon as any signs of stroke are present.

[\(Class I, LOE C\)](#)

The signs and symptoms of stroke are sudden numbness or weakness of the face, arm, or leg, especially on one side of the body; sudden confusion, trouble speaking or understanding; sudden trouble seeing in one or both eyes; sudden trouble walking, dizziness, loss of balance or coordination; and sudden severe headache with no known cause.^{308,309} Community and professional education is essential to improve stroke recognition and early EMS activation.³¹⁰⁻³¹²

***EMS dispatchers should be trained to suspect stroke and rapidly dispatch emergency responders. EMS personnel should be able to perform an out-of-hospital stroke assessment*, establish the time of symptom onset when possible, provide cardiopulmonary support, and notify the receiving hospital that a patient with possible stroke is being transported.*^{313-315, 316-318} [\(*Class I, LOE B\)](#)**

***EMS systems should have protocols that address triaging the patient when possible directly to a stroke center.*^{317, 319, 320} [\(Class I, LOE B\)](#)**

It may be important for a family member to accompany the patient during transport to verify the time of symptom onset and provide consent for interventional therapy.

Patients with acute stroke are at risk for respiratory compromise, and the combination of poor perfusion and hypoxemia will exacerbate and extend ischemic brain injury leading to worse outcomes.³²¹

Both out-of-hospital and in-hospital medical personnel should administer supplementary oxygen to hypoxemic (ie, oxygen saturation <94%) stroke patients (Class 1, LOE C) or those with unknown oxygen saturation.

There are no data to support initiation of hypertension intervention in the prehospital environment.

Unless the patient is hypotensive (systolic blood pressure <90 mm Hg), prehospital intervention for blood pressure is not recommended. (Class III, LOE C)

10.3 Drowning - Updated 2015

Drowning is a leading cause of unintentional injury and death worldwide and a preventable cause of death for more than 4000 Americans annually.^{322,323} The highest rates of morbidity and mortality are among children aged 1 to 4 years.³²³ The incidence of fatal drowning has declined from 1.45 deaths per 100 000 population in 2000 to 1.26 in 2013.³²³ Immediate resuscitation to restore oxygenation and ventilation—especially by bystanders—is essential for survival after a drowning incident.

This topic was last reviewed in 2010, and the treatment recommendations have not changed.

Since the 2010 Guidelines, there has been a growing appreciation for the fact that the response to the submersion victim often involves a multiagency approach with several different organizations responsible for different phases of the victim's care, from the initial aquatic rescue, on-scene resuscitation, transport to hospital, and in-hospital care. Attempting the rescue of a submerged victim has substantial resource implications and may place rescuers at risk themselves.

The 2010 Guidelines are as follows:

Rescuers should provide CPR, particularly rescue breathing, as soon as an unresponsive submersion victim is removed from the water. (Class I, LOE C)

When rescuing a drowning victim of any age, it is reasonable for the lone healthcare provider to give 5 cycles (about 2 minutes) of CPR before leaving the victim to activate the EMS system.

Mouth-to-mouth ventilation in the water may be helpful when administered by a trained rescuer.³²⁴ (Class IIb, LOE C)

Chest compressions are difficult to perform in water; they may not be effective and they could potentially cause harm to both the rescuer and the victim. There is no evidence that water acts as an obstructive foreign body. Maneuvers to relieve foreign-body airway obstruction (FBAO) are not recommended for drowning victims because such maneuvers are not necessary and they can cause injury, vomiting, aspiration, and delay of CPR.³²⁵

Rescuers should remove drowning victims from the water by the fastest means available and should begin resuscitation as quickly as possible. Spinal cord injury is rare among fatal drowning victims.³²⁶ Victims with obvious clinical signs of injury, alcohol intoxication, or a history of diving into shallow water are at a higher risk of spinal cord injury, and health care providers may consider stabilization and possible immobilization of the cervical and thoracic spine for these victims.³²⁷

10.4 Unintentional Hypothermia - Updated 2015

This topic was last reviewed in 2010, and the treatment recommendations have not changed.

10.5 Foreign-Body Airway Obstruction (Choking)

This topic was last reviewed in 2010, and the treatment recommendations are as follows.

FBAO is an uncommon, but preventable, cause of death.³²⁸ Most reported cases of FBAO occur in adults while they are eating.³²⁹ Most reported episodes of choking in infants and children occur during eating or play when parents or childcare providers are present. The choking event is therefore commonly witnessed, and the rescuer usually intervenes while the victim is still responsive. Treatment is usually successful, and survival rates can exceed 95%.³³⁰

10.5.1 Recognition of Foreign-Body Airway Obstruction

Because recognition of FBAO is the key to successful outcome, it is important to distinguish this emergency from fainting, heart attack, seizure, or other conditions that may cause sudden respiratory distress, cyanosis, or loss of consciousness.

Foreign bodies may cause either mild or severe airway obstruction. The rescuer should intervene if the choking victim shows signs of severe airway obstruction. These include signs of poor air exchange and increased breathing difficulty, such as a silent cough, cyanosis, or inability to speak or breathe. The victim may clutch the neck, demonstrating the universal choking sign. Quickly ask, "Are you choking?" If the victim indicates "yes" by nodding his head without speaking, this will verify that the victim has severe airway obstruction.

10.5.2 Relief of Foreign-Body Airway Obstruction

When FBAO produces signs of severe airway obstruction, rescuers must act quickly to relieve the obstruction. If mild obstruction is present and the victim is coughing forcefully, do not interfere with the patient's spontaneous coughing and breathing efforts. Attempt to relieve the obstruction only if signs of severe obstruction develop: the cough becomes silent, respiratory difficulty increases and is accompanied by stridor, or the victim becomes unresponsive. Activate the EMS system quickly if the patient is having difficulty breathing. If more than one rescuer is present, one rescuer should phone 911 while the other rescuer attends to the choking victim.

The clinical data about effectiveness of maneuvers to relieve FBAO are largely retrospective and anecdotal. For responsive adults and children >1 year of age with severe FBAO, case reports show the feasibility and effectiveness of back blows or "slaps,"³³¹⁻³³³ abdominal thrusts,^{330-332,334,335} and chest thrusts.^{331,336} In 1 case series of 513 choking episodes for which EMS was summoned,³³⁰ approximately 50% of the episodes of airway obstruction were relieved prior to arrival of EMS. EMS intervention with abdominal thrusts successfully relieved the obstruction in more than 85% of the remaining cases. The few patients with persistent obstruction usually responded to suction or the use of Magill forceps. Less than 4% died.³³⁰

Although chest thrusts, back slaps, and abdominal thrusts are feasible and effective for relieving severe FBAO in conscious (responsive) adults and children >1 year of age, for simplicity in training it is recommended that abdominal thrusts be applied in rapid sequence until the obstruction is relieved. (Class IIb, LOE B)

If abdominal thrusts are not effective, the rescuer may consider chest thrusts. (Class IIb, LOE B)

It is important to note that abdominal thrusts are not recommended for infants <1 year of age because thrusts may cause injuries.

Chest thrusts should be used for obese patients if the rescuer is unable to encircle the victim's abdomen. If the choking victim is in the late stages of pregnancy, the rescuer should use chest thrusts instead of abdominal thrusts.

If the adult victim with FBAO becomes unresponsive, the rescuer should carefully support the patient to the ground, immediately activate (or send someone to activate) EMS, and then begin CPR. The healthcare provider should carefully lower the victim to the ground, send someone to activate the emergency response system and

Writing Group Member	Employment	Research Grant	Other Research Support	Speakers' Bureau/Honora	Expert Witness	Ownership Interest	Consultant/Advis Board	Other
Raúl J. Gazmuri	Rosalind Franklin University of Medicine and Science	DePaul-Rosalind Franklin University Collaborative Pilot Research Grant Program (basic science research; study mechanisms by which cyclophilin-D modulates transcription of mitochondria genes)†; James R. & Helen D. Russell Institute for Research & Innovation: Small Research Grants Program (basic science research; prevention of oxidative injury to the neonatal heart)*; Department of Defense US Army Medical Research and Material Command (translational research: sustained V1A receptor activation for prolonged	None	None	None	None	None	None

Writing Group Member	Employment	Research Grant	Other Research Support	Speakers' Bureau/Honorary	Expert Witness	Ownership Interest	Consultant/Advisory Board	Other
Zachary D. Goldberger	University of Washington	None	None	None	None	None	None	None
Mary Fran Hazinski	Vanderbilt University	None	None	None	None	None	American Heart Association ECC†	None
Robin Hemphill	Veterans Health Administration	None	None	None	None	None	None	None
Thomas Rea	University of Washington	TBD	TBD	TBD	TBD	TBD	TBD	TBD
Robert A. Swor	William Beaumont Hospital	None	None	None	None	None	None	None
Mark Terry	Johnson County MED-ACT	None	None	None	None	None	None	None
Andrew H. Travers	Emergency Health Services, Nova Scotia (Canada)	TBD	TBD	TBD	TBD	TBD	TBD	TBD

This table represents the relationships of writing group members that may be perceived as actual or reasonably perceived conflicts of interest as reported on the Disclosure Questionnaire, which all members of the writing group are required to complete and submit. A relationship is considered to be “significant” if (a) the person receives \$10 000 or more during any 12-month period, or 5% or more of the person’s gross income; or (b) the person owns 5% or more of the voting stock or share of the entity, or owns \$10 000 or more of the fair market value of the entity. A relationship is considered to be “modest” if it is less than “significant” under the preceding definition. *Modest. †Significant.

11.2 2017 Reviewers

Lorrel E. Brown; Tomas Drabek; Judith Finn; Fredrik Folke; Guillaume Geri; James T. Niemann

Table 5: Part 5: BLS and CPR Quality: 2017 Guidelines Update Reviewer Disclosures

Open table in a [new window](#)

Part 5: BLS and CPR Quality: 2017 Guidelines Update Reviewer Disclosures

Reviewer	Employment	Research Grant	Other Research Support	Speakers' Bureau/Honorary	Expert Witness	Ownership Interest	Consultant/Advisory Board	Other
Lorrel E. Brown	University of Louisville	None	None	None	None	None	None	None
Tomas Drabek	University of Pittsburgh	None	None	None	None	None	None	None
Judith Finn	Curtin University (Australia)	NHMRC (director of the Australian Resuscitation Outcomes Consortium & Aus-ROC, an NHMRC Centre of Research Excellence)*	None	None	None	None	None	None
Fredrik Folke	Gentofte University Hospital, Hellerup (Denmark)	None	None	None	None	None	None	None
Guillaume Geri	Ambroise Paré Hospital (France)	None	None	None	None	None	None	None
James T. Niemann	Harbor-UCL Medical Center	None	None	None	None	None	None	None

This table represents the relationships of reviewers that may be perceived as actual or reasonably perceived conflicts of interest as reported on the Disclosure Questionnaire, which all reviewers are required to complete and submit. A relationship is considered to be "significant" if (a) the person receives \$10 000 or more during any 12-month period, or 5% or more of the person's gross income; or (b) the person owns 5% or more of the voting stock or share of the entity, or owns \$10 000 or more of the fair market value of the entity. A relationship is considered to be "modest" if it is less than "significant" under the preceding definition. *Modest.

11.3 2015 Writing Team

Monica E. Kleinman, Chair; Erin E. Brennan; Zachary D. Goldberger; Robert A. Swor; Mark Terry; Bentley J. Bobrow; Raúl J. Gazmuri; Andrew H. Travers; Thomas Rea

Table 6: Part 5: Adult Basic Life Support and Cardiopulmonary Resuscitation Quality: 2015 Guidelines Update Writing Group Disclosures

Writing Group Member	Employment	Research Grant	Other Research Support	Speakers' Bureau/Honora	Expert Witness	Ownership Interest	Consultant/Advis Board	Other
Thomas Rea	Department of Medicine, University of Washington; Public Health-Seattle and King County, Emergency Medical Services Division	Philips*; Medtronic Foundation*; NIH*; Laerdal Foundation*; Life Sciences Discovery Fund*	None	None	None	None	None	University of Washington*
Robert A. Swor	William Beaumont Hospital	None	None	None	None	None	None	None
Mark Terry	Johnson County MED-ACT	None	None	None	None	None	None	None
Consultant								
Andrew H. Travers	Emergency Health Services, Nova Scotia	None	None	None	None	None	American Heart Association†	None

This table represents the relationships of writing group members that may be perceived as actual or reasonably perceived conflicts of interest as reported on the Disclosure Questionnaire, which all members of the writing group are required to complete and submit. A relationship is considered to be “significant” if (a) the person receives \$10 000 or more during any 12-month period, or 5% or more of the person’s gross income; or (b) the person owns 5% or more of the voting stock or share of the entity, or owns \$10 000 or more of the fair market value of the entity. A relationship is considered to be “modest” if it is less than “significant” under the preceding definition. *Modest. †Significant.

11.4 2010 Writing Team

Robert A. Berg, Chair; Robin Hemphill; Benjamin S. Abella; Tom P. Aufderheide; Diana M. Cave; Mary Fran Hazinski; E. Brooke Lerner; Thomas D. Rea; Michael R. Sayre; Robert A. Swor

Table 7: 2010 - Guidelines Part 5: Adult Basic Life Support: Writing Group Disclosures

Open table in a [new window](#)



Writing Group Member	Employment	Research Grant	Other Research Support	Speakers' Bureau/Honoraria	Ownership Interest	Consultant/Advisory Board	Other
Benjamin S. Abella	University of Pennsylvania Professor	†Philips research grant for study of CPR during inhospital cardiac arrest AHA Clinical Research Program grant-research grant for study of CPR training in the community Doris Duke Foundation-research grant for study of post resuscitation injury after cardiac arrest	†Laerdal Medical Corp-in-kind support of equipment for CPR research	†CME lectures on topics of CPR and hypothermia after cardiac arrest	None	None	†legal review of two cardiac arrest cases, no trial appearances

Writing Group Member	Employment	Research Grant	Other Research Support	Speakers' Bureau/Honorarium	Ownership Interest	Consultant/Advisory Board	Other
Tom P. Aufderheide	Medical College of Wisconsin—Professor of Emergency Medicine	NIH-ROC Consortium- PI of Milwaukee site NETT- PI of Milwaukee site * ResQTrial (Advanced Circulatory Systems, Inc.)-PI of Oshkosh study site, In Kind NHLBI Trial- PI for Milwaukee site, In Kind Medtronics-Consultant JoLife-Consultant Take Heart America-Board Member	*Zoll Medical Corp.- Supplied AEDs and software capturing CPR performance data for ROC Consortium Advanced Circulatory Systems, Inc.- Supplied impedance threshold devices for ROC Consortium	*EMS Today- Compensated speaker, \$2,000	None	*Take Heart *America-Board Member * Medtronic-Consultant * JoLife-Consultant	None

Writing Group Member	Employment	Research Grant	Other Research Support	Speakers' Bureau/Honorarium	Ownership Interest	Consultant/Advisory Board	Other
Diana M. Cave	Legacy Health System, Emanuel Hospital, Emergency Services: Not-for-profit health system consists of 5 hospitals in the Portland, Oregon metro area. Emanuel Hospital is a Level I Trauma Center.— RN, MSN; Portland Com. College, Institute for Health Professionals—Faculty/Instructor	None	None	None	None	None	None
Mary Fran Hazinski	Vanderbilt University School of Nursing—Professor AHA ECC Product Development—Science Editor † Significant compensation from the AHA to write and edit the AHA Guidelines and resuscitation statements and training materials	None	None	None	None	None	None

Writing Group Member	Employment	Research Grant	Other Research Support	Speakers' Bureau/Honoraria	Ownership Interest	Consultant/Advisory Board	Other
E. Brooke Lerner	Medical College of Wisconsin—Associate Professor	None	<p>†Title: Circulation Improving Resuscitation Care Trial Source: Zoll Medical Corporation Role: Consultant Principal Investigator: Lars Wik, M.D. Dates: 12/2006–8/2010 Total Funding to MCW: \$345,000 (funding is received by my employer to support my time on this trial. My institution receives support for 20% of my time and the remaining funds are used for other members of our staff and supplies. My role is to advise them on human subject protection issues and to assist with data management and report generation for the trial)</p>	None	<p>* Stockholder in Medtronic, Pfizer, and General Electric</p>	None	None

Writing Group Member	Employment	Research Grant	Other Research Support	Speakers' Bureau/Honoraria	Ownership Interest	Consultant/Advisory Board	Other
Thomas D. Rea	University of Washington: Physician-Assessor Professor of Medicine; Emergency Medical Services Division of Public Health-Seattle & King County-Program Medical Director	In the past, I have received unrestricted (modest) grant support from Philips Inc and PhysioControl. The topics were related to improving resuscitation generally (changing resuscitation protocols) and not specific to proprietary information or equipment. I am currently an investigator in the ROC. As part of this, I am directly involved in the Feedback Trial to evaluate dynamic fdbk available on the Philips MRX. The ROC is also evaluating the impedance threshold device. These studies are supported by the NIH primarily and I receive no support from Philips or the company that makes the impedance threshold device.	We conducted an AED training study that recently completed where Philips and PhysioControl contributed equipment for the research. I did not receive any of this equipment	None	None	None	I serve on a DSMB for a trial sponsored by Philips to evaluate quantitative VF waveform algorithm to guide care. I receive no support for this effort in order to minimize (eliminate) any conflict

Writing Group Member	Employment	Research Grant	Other Research Support	Speakers' Bureau/Honoraria	Ownership Interest	Consultant/Advisory Board	Other
Michael R. Sayre	The Ohio State University-Associate Professor	None	None	None	None	None	None
Robert A. Swor	Beaumont Hospital—Director EMS Programs	None	None	None	None	None	None

- This table represents the relationships of writing group members that may be perceived as actual or reasonably perceived conflicts of interest as reported on the Disclosure Questionnaire, which all members of the writing group are required to complete and submit. A relationship is considered to be “significant” if (a) the person receives \$10 000 or more during any 12-month period, or 5% or more of the person's gross income; or (b) the person owns 5% or more of the voting stock or share of the entity, or owns \$10 000 or more of the fair market value of the entity. A relationship is considered to be “modest” if it is less than “significant” under the preceding definition.
- [?](#)* Modest.
- [?](#)† Significant.

12 Footnotes

The American Heart Association requests that this document be cited as follows:

American Heart Association. Web-based Integrated Guidelines for Cardiopulmonary Resuscitation and Emergency Cardiovascular Care – [Part 5: Adult Basic Life Support and Cardiopulmonary Resuscitation Quality. ECCguidelines.heart.org](#).

© Copyright 2015, 2017 American Heart Association, Inc.

References

1. FDA approves new hand-held auto-injector to reverse opioid overdose [news release]. Silver Spring, MD: US Food and Drug Administration; April 3, 2014. <http://www.fda.gov/NewsEvents/Newsroom/PressAnnouncements/ucm391465.htm>. Accessed July 27, 2015.
2. Olasveengen TM, Caen AR, Mancini ME, Maconochie IK, Aickin R, Atkins DL, Berg RA, Bingham R, Brooks SC, Castrén M, Chung SP, Considine J, Couto TB, Escalante R, Gazmuri RJ, Guerguerian AM, T. H, Koster RW, Kudenchuk PJ, Lang E, Lim SH, Løfgren B, Meaney PA, Montgomery WH, Morley PT, Morrison LJ, Nation KJ, Ng KC, Nadkarni VM, Nishiyama C, Nuthall G, Ong YKG, Perkins GD, Reis AG, Ristagno G, Sakamoto T, Sayre MR, Schexnayder SM, Sierra A, Singletary EM, Shimizu N, Smyth MA, Stanton D, Tijssen JA, Travers AH, Vaillancourt C, van de Voorde P, Hazinski MF, Nolan JP; for the ILCOR Collaborators. 2017 International Consensus on Cardiopulmonary Resuscitation and Emergency Cardiovascular Care Science With Treatment Recommendations summary. *Circulation*. 2017. In press.
3. Morrison LJ, Gent LM, Lang E, Nunnally ME, Parker MJ, Callaway CW, Nadkarni VM, Fernandez AR, Billi JE, Egan JR, Griffin RE, Shuster M, Hazinski MF. Part 2: evidence evaluation and management of conflicts of interest: 2015 American Heart Association Guidelines Update for Cardiopulmonary Resuscitation and Emergency Cardiovascular Care. *Circulation*. 2015;132(suppl 2):S368–S382. doi: 10.1161/CIR.0000000000000253.
- 4.

- Perkins GD, Travers AH, Berg RA, Castren M, Considine J, Escalante R, Gazmuri RJ, Koster RW, Lim SH, Nation KJ, Olasveengen TM, Sakamoto T, Sayre MR, Sierra A, Smyth MA, Stanton D, Vaillancourt C; on behalf of the Basic Life Support Chapter Collaborators. Part 3: adult basic life support and automated external defibrillation: 2015 International Consensus on Cardiopulmonary Resuscitation and Emergency Cardiovascular Care Science With Treatment Recommendations. *Circulation*. 2015;132(suppl 1):S51–S83. doi: 10.1161/CIR.0000000000000272.
5. Travers AH, Perkins GD, Berg RA, Castren M, Considine J, Escalante R, Gazmuri RJ, Koster RW, Lim SH, Nation KJ, Olasveengen TM, Sakamoto T, Sayre MR, Sierra A, Smyth MA, Stanton D, Vaillancourt C; on behalf of the Basic Life Support Chapter Collaborators. Part 3: adult basic life support and automated external defibrillation: 2015 International Consensus on Cardiopulmonary Resuscitation and Emergency Cardiovascular Care Science With Treatment Recommendations. *Resuscitation*. 2015. In press.
 6. Morley PT, Lang E, Aickin R, Billi JE, Eigel B, Ferrer JME, Finn JC, Gent LM, Griffin RE, Hazinski MF, Maconochie IK, Montgomery WH, Morrison LJ, Nadkarni VM, Nikolaou NI, Nolan JP, Perkins GD, Sayre MR, Travers AH, Wyllie J, Zideman DA. Part 2: evidence evaluation and management of conflicts of interest: 2015 International Consensus on Cardiopulmonary Resuscitation and Emergency Cardiovascular Care Science With Treatment Recommendations. *Circulation*. 2015;132(suppl 1):S40–S50. doi: 10.1161/CIR.0000000000000271.
 7. Centers for Disease Control and Prevention. 2014 Cardiac Arrest Registry to Enhance Survival (CARES) National Summary Report. 2014. <https://mycares.net/sitepages/uploads/2015/2014%20Non-Traumatic%20National%20Summary%20Report.pdf>. Accessed April 30, 2015.
 8. Mozaffarian D, Benjamin EJ, Go AS, Arnett DK, Blaha MJ, Cushman M, de Ferranti S, Després JP, Fullerton HJ, Howard VJ, Huffman MD, Judd SE, Kissela BM, Lackland DT, Lichtman JH, Lisabeth LD, Liu S, Mackey RH, Matchar DB, McGuire DK, Mohler ER 3rd, Moy CS, Muntner P, Mussolino ME, Nasir K, Neumar RW, Nichol G, Palaniappan L, Pandey DK, Reeves MJ, Rodriguez CJ, Sorlie PD, Stein J, Towfighi A, Turan TN, Virani SS, Willey JZ, Woo D, Yeh RW, Turner MB; on behalf of the American Heart Association Statistics Committee and Stroke Statistics Subcommittee. Heart disease and stroke statistics—2015 update: a report from the American Heart Association. *Circulation*. 2015;131:e29–e322. doi: 10.1161/CIR.0000000000000152.
 9. Daya MR, Schmicker RH, Zive DM, Rea TD, Nichol G, Buick JE, Brooks S, Christenson J, MacPhee R, Craig A, Rittenberger JC, Davis DP, May S, Wigginton J, Wang H; Resuscitation Outcomes Consortium Investigators. Out-of-hospital cardiac arrest survival improving over time: Results from the Resuscitation Outcomes Consortium (ROC). *Resuscitation*. 2015;91:108–115. doi: 10.1016/j.resuscitation.2015.02.003.
 10. Public Health, Seattle and King County, Division of Emergency Medical Services. 2014 Annual Report. <http://www.kingcounty.gov/healthservices/health~/media/health/publichealth/documents/ems/2014AnnualReport.ashx>. Accessed May 7, 2015.
 11. Nichol G, Thomas E, Callaway CW, Hedges J, Powell JL, Aufderheide TP, Rea T, Lowe R, Brown T, Dreyer J, Davis D, Idris A, Stiell I; Resuscitation Outcomes Consortium Investigators. Regional variation in out-of-hospital cardiac arrest incidence and outcome. *JAMA*. 2008;300:1423–1431. doi: 10.1001/jama.300.12.1423.
 12. Chan PS, Nichol G, Krumholz HM, Spertus JA, Nallamothu BK; American Heart Association National Registry of Cardiopulmonary Resuscitation (NRCPR) Investigators. Hospital variation in time to defibrillation after in-hospital cardiac arrest. *Arch Intern Med*. 2009;169:1265–1273. doi: 10.1001/archinternmed.2009.196.
 13. Chan PS, McNally B, Tang F, Kellermann A; CARES Surveillance Group. Recent trends in survival from out-of-hospital cardiac arrest in the United States. *Circulation*. 2014;130:1876–1882. doi: 10.1161/CIRCULATIONAHA.114.009711.
 14. Berg RA, Hemphill R, Abella BS, Aufderheide TP, Cave DM, Hazinski MF, Lerner EB, Rea TD, Sayre MR, Swor RA. Part 5: adult basic life support: 2010 American Heart Association Guidelines for Cardiopulmonary Resuscitation and Emergency Cardiovascular Care. *Circulation*. 2010;122(suppl 3):S685–S705. doi: 10.1161/CIRCULATIONAHA.110.970939.
 15. Becker LB, Pepe PE. Ensuring the effectiveness of community-wide emergency cardiac care. *Ann Emerg Med*. 1993;22(2 pt 2):354–365.
 16. Lerner EB, Rea TD, Bobrow BJ, Acker JE 3rd, Berg RA, Brooks SC, Cone DC, Gay M, Gent LM, Mears G, Nadkarni VM, O'Connor RE, Potts J, Sayre MR, Swor RA, Travers AH; American Heart Association Emergency Cardiovascular Care Committee; Council on Cardiopulmonary, Critical Care, Perioperative and Resuscitation. Emergency medical service dispatch cardiopulmonary resuscitation prearrival instructions to improve survival from out-of-hospital cardiac arrest: a scientific statement from the American Heart Association. *Circulation*. 2012;125:648–655. doi: 10.1161/CIR.0b013e31823ee5fc.
 17. Berdowski J, Beekhuis F, Zwinderman AH, Tijssen JG, Koster RW. Importance of the first link: description and recognition of an out-of-hospital cardiac arrest in an emergency call. *Circulation*. 2009;119:2096–2102. doi: 10.1161/CIRCULATIONAHA.108.768325.
 18. Hauff SR, Rea TD, Culley LL, Kerry F, Becker L, Eisenberg MS. Factors impeding dispatcher-assisted telephone cardiopulmonary resuscitation. *Ann Emerg Med*. 2003;42:731–737. doi: 10.1016/S0196064403004232.
 19. Vaillancourt C, Verma A, Trickett J, Crete D, Beaudoin T, Nesbitt L, Wells GA, Stiell IG. Evaluating the effectiveness of dispatch-assisted cardiopulmonary resuscitation instructions. *Acad Emerg Med*. 2007;14:877–883. doi: 10.1197/j.aem.2007.06.021.
 20. Bohm K, Rosenqvist M, Hollenberg J, Biber B, Engerström L, Svensson L. Dispatcher-assisted telephone-guided cardiopulmonary resuscitation: an underused lifesaving system. *Eur J Emerg Med*. 2007;14:256–259. doi: 10.1097/MEJ.0b013e31823a3cd1.

21. Hallstrom AP, Cobb LA, Johnson E, Copass MK. Dispatcher assisted CPR: implementation and potential benefit. A 12-year study. *Resuscitation*. 2003;57:123–129.
22. Nurmi J, Pettilä V, Biber B, Kuisma M, Komulainen R, Castrén M. Effect of protocol compliance to cardiac arrest identification by emergency medical dispatchers. *Resuscitation*. 2006;70:463–469. doi: 10.1016/j.resuscitation.2006.01.016.
23. Eisenberg MS, Hallstrom AP, Carter WB, Cummins RO, Bergner L, Pierce J. Emergency CPR instruction via telephone. *Am J Public Health*. 1985;75:47–50.
24. Garza AG, Gratton MC, Chen JJ, Carlson B. The accuracy of predicting cardiac arrest by emergency medical services dispatchers: the calling party effect. *Acad Emerg Med*. 2003;10:955–960.
25. Flynn J, Archer F, Morgans A. Sensitivity and specificity of the medical priority dispatch system in detecting cardiac arrest emergency calls in Melbourne. *Prehosp Disaster Med*. 2006;21:72–76.
26. Ma MH, Lu TC, Ng JC, Lin CH, Chiang WC, Ko PC, Shih FY, Huang CH, Hsiung KH, Chen SC, Chen WJ. Evaluation of emergency medical dispatch in out-of-hospital cardiac arrest in Taipei. *Resuscitation*. 2007;73:236–245. doi: 10.1016/j.resuscitation.2006.09.005.
27. Cairns KJ, Hamilton AJ, Marshall AH, Moore MJ, Adgey AA, Kee F. The obstacles to maximising the impact of public access defibrillation: an assessment of the dispatch mechanism for out-of-hospital cardiac arrest. *Heart*. 2008;94:349–353. doi: 10.1136/hrt.2006.109785.
28. Deakin CD, Evans S, King P. Evaluation of telephone-cardiopulmonary resuscitation advice for paediatric cardiac arrest. *Resuscitation*. 2010;81:853–856. doi: 10.1016/j.resuscitation.2010.02.007.
29. Bång A, Herlitz J, Martinell S. Interaction between emergency medical dispatcher and caller in suspected out-of-hospital cardiac arrest calls with focus on agonal breathing. A review of 100 tape recordings of true cardiac arrest cases. *Resuscitation*. 2003;56:25–34.
30. Akahane M, Ogawa T, Tanabe S, Koike S, Horiguchi H, Yasunaga H, Imamura T. Impact of telephone dispatcher assistance on the outcomes of pediatric out-of-hospital cardiac arrest. *Crit Care Med*. 2012;40:1410–1416. doi: 10.1097/CCM.0b013e31823e99ae.
31. Svensson L, Bohm K, Castrén M, Pettersson H, Engerström L, Herlitz J, Rosenqvist M. Compression-only CPR or standard CPR in out-of-hospital cardiac arrest. *N Engl J Med*. 2010;363:434–442. doi: 10.1056/NEJMoa0908991.
32. Hallstrom AP. Dispatcher-assisted “phone” cardiopulmonary resuscitation by chest compression alone or with mouth-to-mouth ventilation. *Crit Care Med*. 2000;28(11 suppl):N190–N192.
33. Rea TD, Fahrenbruch C, Culley L, Donohoe RT, Hambly C, Innes J, Bloomingdale M, Subido C, Romines S, Eisenberg MS. CPR with chest compression alone or with rescue breathing. *N Engl J Med*. 2010;363:423–433. doi: 10.1056/NEJMoa0908993.
34. Heward A, Damiani M, Hartley-Sharpe C. Does the use of the Advanced Medical Priority Dispatch System affect cardiac arrest detection? *Emerg Med J*. 2004;21:115–118.
35. Roppolo LP, Westfall A, Pepe PE, Nobel LL, Cowan J, Kay JJ, Idris AH. Dispatcher assessments for agonal breathing improve detection of cardiac arrest. *Resuscitation*. 2009;80:769–772.
36. Bohm K, Stalhandske B, Rosenqvist M, Ulfvarson J, Hollenberg J, Svensson L. Tuition of emergency medical dispatchers in the recognition of agonal respiration increases the use of telephone assisted CPR. *Resuscitation*. 2009;80:1025–1028.
37. Bahr J, Klingler H, Panzer W, Rode H, Kettler D. Skills of lay people in checking the carotid pulse. *Resuscitation*. 1997;35:23–26.
38. Brennan RT, Braslow A. Skill mastery in public CPR classes. *Am J Emerg Med*. 1998;16:653–657.
39. Chamberlain D, Smith A, Woollard M, Colquhoun M, Handley AJ, Leaves S, Kern KB. Trials of teaching methods in basic life support: comparison of simulated CPR performance after first training and at 6 months, with a note on the value of re-training. *Resuscitation*. 2002;53:179–187.
40. Eberle B, Dick WF, Schneider T, Wisser G, Doetsch S, Tzanova I. Checking the carotid pulse check: diagnostic accuracy of first responders in patients with and without a pulse. *Resuscitation*. 1996;33:107–116.
41. Frederick K, Bixby E, Orzel MN, Stewart-Brown S, Willett K. Will changing the emphasis from ‘pulseless’ to ‘no signs of circulation’ improve the recall scores for effective life support skills in children? *Resuscitation*. 2002;55:255–261.
42. Lapostolle F, Le Toumelin P, Agostinucci JM, Catoire J, Adnet F. Basic cardiac life support providers checking the carotid pulse: performance, degree of conviction, and influencing factors. *Acad Emerg Med*. 2004;11:878–880.
43. Moule P. Checking the carotid pulse: diagnostic accuracy in students of the healthcare professions. *Resuscitation*. 2000;44:195–201.
44. Nyman J, Sihvonen M. Cardiopulmonary resuscitation skills in nurses and nursing students. *Resuscitation*. 2000;47:179–184.
45. Owen CJ, Wyllie JP. Determination of heart rate in the baby at birth. *Resuscitation*. 2004;60:213–217.

46. Sarti A, Savron F, Ronfani L, Pelizzo G, Barbi E. Comparison of three sites to check the pulse and count heart rate in hypotensive infants. *Paediatr Anaesth*. 2006;16:394–398.
47. Ochoa FJ, Ramalle-Gomara E, Carpintero JM, Garcia A, Saralegui I. Competence of health professionals to check the carotid pulse. *Resuscitation*. 1998;37:173–175.
48. Mather C, O'Kelly S. The palpation of pulses. *Anaesthesia*. 1996;51:189–191.
49. Rea TD, Helbock M, Perry S, Garcia M, Cloyd D, Becker L, Eisenberg M. Increasing use of cardiopulmonary resuscitation during out-of-hospital ventricular fibrillation arrest: survival implications of guideline changes. *Circulation*. 2006;114:2760–2765.
50. Berg RA, Hilwig RW, Berg MD, Berg DD, Samson RA, Indik JH, Kern KB. Immediate post-shock chest compressions improve outcome from prolonged ventricular fibrillation. *Resuscitation*. 2008;78:71–76.
51. Tang W, Snyder D, Wang J, Huang L, Chang YT, Sun S, Weil MH. One-shock versus three-shock defibrillation protocol significantly improves outcome in a porcine model of prolonged ventricular fibrillation cardiac arrest. *Circulation*. 2006;113:2683–2689.
52. Garza AG, Gratton MC, Salomone JA, Lindholm D, McElroy J, Archer R. Improved patient survival using a modified resuscitation protocol for out-of-hospital cardiac arrest. *Circulation*. 2009;119:2597–2605.
53. Bobrow BJ, Clark LL, Ewy GA, Chikani V, Sanders AB, Berg RA, Richman PB, Kern KB. Minimally interrupted cardiac resuscitation by emergency medical services for out-of-hospital cardiac arrest. *JAMA*. 2008;299:1158–1165.
54. Kellum MJ, Kennedy KW, Barney R, Keilhauer FA, Bellino M, Zuercher M, Ewy GA. Cardiocerebral resuscitation improves neurologically intact survival of patients with out-of-hospital cardiac arrest. *Ann Emerg Med*. 2008;52:244–252.
55. Sayre MR, Cantrell SA, White LJ, Hiestand BC, Keseg DP, Koser S. Impact of the 2005 American Heart Association cardiopulmonary resuscitation and emergency cardiovascular care guidelines on out-of-hospital cardiac arrest survival. *Prehosp Emerg Care*. 2009;13:469–477.
56. Lubrano R, Cecchetti C, Bellelli E, Gentile I, Loayza Levano H, Orsini F, Bertazzoni G, Messi G, Rugolotto S, Pirozzi N, Elli M. Comparison of times of intervention during pediatric CPR maneuvers using ABC and CAB sequences: a randomized trial. *Resuscitation*. 2012;83:1473–1477. doi: 10.1016/j.resuscitation.2012.04.011.
57. Sekiguchi H, Kondo Y, Kukita I. Verification of changes in the time taken to initiate chest compressions according to modified basic life support guidelines. *Am J Emerg Med*. 2013;31:1248–1250. doi: 10.1016/j.ajem.2013.02.047.
58. Marsch S, Tschan F, Semmer NK, Zobrist R, Hunziker PR, Hunziker S. ABC versus CAB for cardiopulmonary resuscitation: a prospective, randomized simulator-based trial. *Swiss Med Wkly*. 2013;143:w13856. doi: 10.4414/smw.2013.13856.
59. Sasson C, Rogers MA, Dahl J, Kellermann AL. Predictors of survival from out-of-hospital cardiac arrest: a systematic review and meta-analysis. *Circ Cardiovasc Qual Outcomes*. 2010;3:63–81. doi: 10.1161/CIRCOUTCOMES.109.889576.
60. Hüpfel M, Selig HF, Nagele P. Chest-compression-only versus standard cardiopulmonary resuscitation: a meta-analysis. *Lancet*. 2010;376:1552–1557. doi: 10.1016/S0140-6736(10)61454-7.
61. Iwami T, Kawamura T, Hiraide A, Berg RA, Hayashi Y, Nishiuchi T, Kajino K, Yonemoto N, Yukioka H, Sugimoto H, Kakuchi H, Sase K, Yokoyama H, Nonogi H. Effectiveness of bystander-initiated cardiac-only resuscitation for patients with out-of-hospital cardiac arrest. *Circulation*. 2007;116:2900–2907. doi: 10.1161/CIRCULATIONAHA.107.723411.
62. Kitamura T, Iwami T, Kawamura T, Nagao K, Tanaka H, Hiraide A; Implementation Working Group for All-Japan Utstein Registry of the Fire and Disaster Management Agency. Bystander-initiated rescue breathing for out-of-hospital cardiac arrests of noncardiac origin. *Circulation*. 2010;122:293–299. doi: 10.1161/CIRCULATIONAHA.109.926816.
63. Kitamura T, Iwami T, Kawamura T, Nagao K, Tanaka H, Berg RA, Hiraide A; Implementation Working Group for All-Japan Utstein Registry of the Fire and Disaster Management Agency. Time-dependent effectiveness of chest compression-only and conventional cardiopulmonary resuscitation for out-of-hospital cardiac arrest of cardiac origin. *Resuscitation*. 2011;82:3–9. doi: 10.1016/j.resuscitation.2010.09.468.
64. Ong ME, Ng FS, Anushia P, Tham LP, Leong BS, Ong VY, Tiah L, Lim SH, Anantharaman V. Comparison of chest compression only and standard cardiopulmonary resuscitation for out-of-hospital cardiac arrest in Singapore. *Resuscitation*. 2008;78:119–126. doi: 10.1016/j.resuscitation.2008.03.012.
65. SOS-KANTO Study Group. Cardiopulmonary resuscitation by bystanders with chest compression only (SOS-KANTO): an observational study. *Lancet*. 2007;369:920–926.
66. Bobrow BJ, Spaite DW, Berg RA, Stolz U, Sanders AB, Kern KB, Vadeboncoeur TF, Clark LL, Gallagher JV, Stapczynski JS, LoVecchio F, Mullins TJ, Humble WO, Ewy GA. Chest compression-only CPR by lay rescuers and survival from out-of-hospital cardiac arrest. *JAMA*. 2010;304:1447–1454. doi: 10.1001/jama.2010.1392.
67. Olasveengen TM, Wik L, Steen PA. Standard basic life support vs. continuous chest compressions only in out-of-hospital cardiac arrest. *Acta Anaesthesiol Scand*. 2008;52:914–919. doi: 10.1111/j.1399-6576.2008.01723.x.

68. Panchal AR, Bobrow BJ, Spaite DW, Berg RA, Stolz U, Vadeboncoeur TF, Sanders AB, Kern KB, Ewy GA. Chest compression-only cardiopulmonary resuscitation performed by lay rescuers for adult out-of-hospital cardiac arrest due to non-cardiac aetiologies. *Resuscitation*. 2013;84:435–439. doi: 10.1016/j.resuscitation.2012.07.038.
69. Mosier J, Itty A, Sanders A, Mohler J, Wendel C, Poulsen J, Shellenberger J, Clark L, Bobrow B. Cardiocerebral resuscitation is associated with improved survival and neurologic outcome from out-of-hospital cardiac arrest in elders. *Acad Emerg Med*. 2010;17:269–275. doi: 10.1111/j.1553-2712.2010.00689.x.
70. Bobrow BJ, Clark LL, Ewy GA, Chikani V, Sanders AB, Berg RA, Richman PB, Kern KB. Minimally interrupted cardiac resuscitation by emergency medical services for out-of-hospital cardiac arrest. *JAMA*. 2008;299:1158–1165. doi: 10.1001/jama.299.10.1158.
71. Bobrow BJ, Ewy GA, Clark L, Chikani V, Berg RA, Sanders AB, Vadeboncoeur TF, Hilwig RW, Kern KB. Passive oxygen insufflation is superior to bag-valve-mask ventilation for witnessed ventricular fibrillation out-of-hospital cardiac arrest. *Ann Emerg Med*. 2009;54:656–662.e1. doi: 10.1016/j.annemergmed.2009.06.011.
72. Kellum MJ, Kennedy KW, Barney R, Keilhauer FA, Bellino M, Zuercher M, Ewy GA. Cardiocerebral resuscitation improves neurologically intact survival of patients with out-of-hospital cardiac arrest. *Ann Emerg Med*. 2008;52:244–252. doi: 10.1016/j.annemergmed.2008.02.006.
73. Kellum MJ, Kennedy KW, Ewy GA. Cardiocerebral resuscitation improves survival of patients with out-of-hospital cardiac arrest. *Am J Med*. 2006;119:335–340. doi: 10.1016/j.amjmed.2005.11.014.
74. Ruppert M, Reith MW, Widmann JH, Lackner CK, Kerkmann R, Schweiberer L, Peter K. Checking for breathing: evaluation of the diagnostic capability of emergency medical services personnel, physicians, medical students, and medical laypersons. *Ann Emerg Med*. 1999;34:720–729.
75. Safar P, Escarraga LA, Chang F. Upper airway obstruction in the unconscious patient. *J Appl Physiol*. 1959;14:760–764.
76. Perkins GD, Stephenson B, Hulme J, Monsieurs KG. Birmingham assessment of breathing study (BABS). *Resuscitation*. 2005;64:109–113.
77. Berdowski J, Beekhuis F, Zwinderman AH, Tijssen JG, Koster RW. Importance of the first link: description and recognition of an out-of-hospital cardiac arrest in an emergency call. *Circulation*. 2009;119:2096–2102.
78. Bohm K, Rosenqvist M, Hollenberg J, Biber B, Engerstrom L, Svensson L. Dispatcher-assisted telephone-guided cardiopulmonary resuscitation: an underused lifesaving system. *Eur J Emerg Med*. 2007;14:256–259.
79. Clawson J, Olola C, Scott G, Heward A, Patterson B. Effect of a Medical Priority Dispatch System key question addition in the seizure/convulsion/fitting protocol to improve recognition of ineffective (agonal) breathing. *Resuscitation*. 2008;79:257–264.
80. US Food and Drug Administration. FDA News Release: FDA approves new hand-held auto-injector to reverse opioid overdose. 2015. <http://www.fda.gov/NewsEvents/Newsroom/PressAnnouncements/ucm391465.htm>. Accessed May 11, 2015.
81. Walley AY, Doe-Simkins M, Quinn E, Pierce C, Xuan Z, Ozonoff A. Opioid overdose prevention with intranasal naloxone among people who take methadone. *J Subst Abuse Treat*. 2013;44:241–247. doi: 10.1016/j.jsat.2012.07.004.
82. Albert S, Brason FW 2nd, Sanford CK, Dasgupta N, Graham J, Lovette B. Project Lazarus: community-based overdose prevention in rural North Carolina. *Pain Med*. 2011;12 suppl 2:S77–S85. doi: 10.1111/j.1526-4637.2011.01128.x.
83. Maxwell S, Bigg D, Stanczykiewicz K, Carlberg-Racich S. Prescribing naloxone to actively injecting heroin users: a program to reduce heroin overdose deaths. *J Addict Dis*. 2006;25:89–96. doi: 10.1300/J069v25n03_11.
84. Olasveengen TM, Wik L, Steen PA. Standard basic life support vs. continuous chest compressions only in out-of-hospital cardiac arrest. *Acta Anaesthesiol Scand*. 2008;52:914–919.
85. Ong ME, Ng FS, Anushia P, Tham LP, Leong BS, Ong VY, Tiah L, Lim SH, Anantharaman V. Comparison of chest compression only and standard cardiopulmonary resuscitation for out-of-hospital cardiac arrest in Singapore. *Resuscitation*. 2008;78:119–126.
86. Bohm K, Rosenqvist M, Herlitz J, Hollenberg J, Svensson L. Survival is similar after standard treatment and chest compression only in out-of-hospital bystander cardiopulmonary resuscitation. *Circulation*. 2007;116:2908–2912.
87. Iwami T, Kawamura T, Hiraide A, Berg RA, Hayashi Y, Nishiuchi T, Kajino K, Yonemoto N, Yukioka H, Sugimoto H, Kakuchi H, Sase K, Yokoyama H, Nonogi H. Effectiveness of bystander-initiated cardiac-only resuscitation for patients with out-of-hospital cardiac arrest. *Circulation*. 2007;116:2900–2907.
88. SOS-KANTO Study Group. Cardiopulmonary resuscitation by bystanders with chest compression only (SOS-KANTO): an observational study. *Lancet*. 2007;369:920–926.
89. Cha KC, Kim HJ, Shin HJ, Kim H, Lee KH, Hwang SO. Hemodynamic effect of external chest compressions at the lower end of the sternum in cardiac arrest patients. *J Emerg Med*. 2013;44:691–697. doi: 10.1016/j.jemermed.2012.09.026.
- 90.

- Qvigstad E, Kramer-Johansen J, Tømte Ø, Skålhegg T, Sørensen Ø, Sunde K, Olasveengen TM. Clinical pilot study of different hand positions during manual chest compressions monitored with capnography. *Resuscitation*. 2013;84:1203–1207. doi: 10.1016/j.resuscitation.2013.03.010.
91. Orlowski JP. Optimum position for external cardiac compression in infants and young children. *Ann Emerg Med*. 1986;15:667–673.
92. Kundra P, Dey S, Ravishankar M. Role of dominant hand position during external cardiac compression. *Br J Anaesth*. 2000;84:491–493.
93. Nikandish R, Shahbazi S, Golabi S, Beygi N. Role of dominant versus non-dominant hand position during uninterrupted chest compression CPR by novice rescuers: a randomized double-blind crossover study. *Resuscitation*. 2008;76:256–260.
94. Shin J, Rhee JE, Kim K. Is the inter-nipple line the correct hand position for effective chest compression in adult cardiopulmonary resuscitation? *Resuscitation*. 2007;75:305–310.
95. Kusunoki S, Tanigawa K, Kondo T, Kawamoto M, Yuge O. Safety of the inter-nipple line hand position landmark for chest compression. *Resuscitation*. 2009;80:1175–1180.
96. Idris AH, Guffey D, Pepe PE, Brown SP, Brooks SC, Callaway CW, Christenson J, Davis DP, Daya MR, Gray R, Kudenchuk PJ, Larsen J, Lin S, Menegazzi JJ, Sheehan K, Sopko G, Stiell I, Nichol G, Aufderheide TP; Resuscitation Outcomes Consortium Investigators. Chest compression rates and survival following out-of-hospital cardiac arrest. *Crit Care Med*. 2015;43:840–848. doi: 10.1097/CCM.0000000000000824.
97. Idris AH, Guffey D, Aufderheide TP, Brown S, Morrison LJ, Nichols P, Powell J, Daya M, Bigham BL, Atkins DL, Berg R, Davis D, Stiell I, Sopko G, Nichol G; Resuscitation Outcomes Consortium (ROC) Investigators. Relationship between chest compression rates and outcomes from cardiac arrest. *Circulation*. 2012;125:3004–3012. doi: 10.1161/CIRCULATIONAHA.111.059535.
98. Vadeboncoeur T, Stolz U, Panchal A, Silver A, Venuti M, Tobin J, Smith G, Nunez M, Karamooz M, Spaite D, Bobrow B. Chest compression depth and survival in out-of-hospital cardiac arrest. *Resuscitation*. 2014;85:182–188. doi: 10.1016/j.resuscitation.2013.10.002.
99. Hostler D, Everson-Stewart S, Rea TD, Stiell IG, Callaway CW, Kudenchuk PJ, Sears GK, Emerson SS, Nichol G; Resuscitation Outcomes Consortium Investigators. Effect of real-time feedback during cardiopulmonary resuscitation outside hospital: prospective, cluster-randomised trial. *BMJ*. 2011;342:d512.
100. Stiell IG, Brown SP, Christenson J, Cheskes S, Nichol G, Powell J, Bigham B, Morrison LJ, Larsen J, Hess E, Vaillancourt C, Davis DP, Callaway CW; Resuscitation Outcomes Consortium (ROC) Investigators. What is the role of chest compression depth during out-of-hospital cardiac arrest resuscitation? *Crit Care Med*. 2012;40:1192–1198. doi: 10.1097/CCM.0b013e31823bc8bb.
101. Stiell IG, Brown SP, Nichol G, Cheskes S, Vaillancourt C, Callaway CW, Morrison LJ, Christenson J, Aufderheide TP, Davis DP, Free C, Hostler D, Stouffer JA, Idris AH; Resuscitation Outcomes Consortium Investigators. What is the optimal chest compression depth during out-of-hospital cardiac arrest resuscitation of adult patients? *Circulation*. 2014;130:1962–1970. doi: 10.1161/CIRCULATIONAHA.114.008671.
102. Kramer-Johansen J, Myklebust H, Wik L, Fellows B, Svensson L, Sørebo H, Steen PA. Quality of out-of-hospital cardiopulmonary resuscitation with real time automated feedback: a prospective inter-ventional study. *Resuscitation*. 2006;71:283–292. doi: 10.1016/j.resuscitation.2006.05.011.
103. Edelson DP, Abella BS, Kramer-Johansen J, Wik L, Myklebust H, Barry AM, Merchant RM, Hoek TL, Steen PA, Becker LB. Effects of compression depth and pre-shock pauses predict defibrillation failure during cardiac arrest. *Resuscitation*. 2006;71:137–145. doi: 10.1016/j.resuscitation.2006.04.008.
104. Edelson DP, Litzinger B, Arora V, Walsh D, Kim S, Lauderdale DS, Vanden Hoek TL, Becker LB, Abella BS. Improving in-hospital cardiac arrest process and outcomes with performance debriefing. *Arch Intern Med*. 2008;168:1063–1069. doi: 10.1001/archinte.168.10.1063.
105. Babbs CF, Kemeny AE, Quan W, Freeman G. A new paradigm for human resuscitation research using intelligent devices. *Resuscitation*. 2008;77:306–315. doi: 10.1016/j.resuscitation.2007.12.018.
106. Bohn A, Weber TP, Wecker S, Harding U, Osada N, Van Aken H, Lukas RP. The addition of voice prompts to audiovisual feedback and debriefing does not modify CPR quality or outcomes in out of hospital cardiac arrest—a prospective, randomized trial. *Resuscitation*. 2011;82:257–262. doi: 10.1016/j.resuscitation.2010.11.006.
107. Hellevuo H, Sainio M, Nevalainen R, Huhtala H, Oikkola KT, Tenhunen J, Hoppu S. Deeper chest compression - more complications for cardiac arrest patients? *Resuscitation*. 2013;84:760–765. doi: 10.1016/j.resuscitation.2013.02.015.
108. Talley DB, Ornato JP, Clarke AM. Computer-aided characterization and optimization of the Thumper compression waveform in closed-chest CPR. *Biomed Instrum Technol*. 1990;24:283–288.
109. Handley AJ, Handley SA. Improving CPR performance using an audible feedback system suitable for incorporation into an automated external defibrillator. *Resuscitation*. 2003;57:57–62.

- Zuercher M, Hilwig RW, Ranger-Moore J, Nysaether J, Nadkarni VM, Berg MD, Kern KB, Sutton R, Berg RA. Leaning during chest compressions impairs cardiac output and left ventricular myocardial blood flow in piglet cardiac arrest. *Crit Care Med*. 2010;38:1141–1146. doi: 10.1097/CCM.0b013e3181ce1fe2.
111. Niles DE, Sutton RM, Nadkarni VM, Glatz A, Zuercher M, Maltese MR, Eilevstjonn J, Abella BS, Becker LB, Berg RA. Prevalence and hemo-dynamic effects of leaning during CPR. *Resuscitation*. 2011;82 suppl 2:S23–S26. doi: 10.1016/S0300-9572(11)70147-2.
112. Fried DA, Leary M, Smith DA, Sutton RM, Niles D, Herzberg DL, Becker LB, Abella BS. The prevalence of chest compression leaning during in-hospital cardiopulmonary resuscitation. *Resuscitation*. 2011;82:1019–1024. doi: 10.1016/j.resuscitation.2011.02.032.
113. Niles D, Nysaether J, Sutton R, Nishisaki A, Abella BS, Arbogast K, Maltese MR, Berg RA, Helfaer M, Nadkarni V. Leaning is common during in-hospital pediatric CPR, and decreased with automated corrective feedback. *Resuscitation*. 2009;80:553–557. doi: 10.1016/j.resuscitation.2009.02.012.
114. Yannopoulos D, McKnite S, Aufderheide TP, Sigurdsson G, Pirralo RG, Benditt D, Lurie KG. Effects of incomplete chest wall decompression during cardiopulmonary resuscitation on coronary and cerebral perfusion pressures in a porcine model of cardiac arrest. *Resuscitation*. 2005;64:363–372. doi: 10.1016/j.resuscitation.2004.10.009.
115. Glatz AC, Nishisaki A, Niles DE, Hanna BD, Eilevstjonn J, Diaz LK, Gillespie MJ, Rome JJ, Sutton RM, Berg RA, Nadkarni VM. Sternal wall pressure comparable to leaning during CPR impacts intrathoracic pressure and haemodynamics in anaesthetized children during cardiac catheterization. *Resuscitation*. 2013;84:1674–1679. doi: 10.1016/j.resuscitation.2013.07.010.
116. Meaney PA, Bobrow BJ, Mancini ME, Christenson J, de Caen AR, Bhanji F, Abella BS, Kleinman ME, Edelson DP, Berg RA, Aufderheide TP, Menon V, Leary M; CPR Quality Summit Investigators, the American Heart Association Emergency Cardiovascular Care Committee, and the Council on Cardiopulmonary, Critical Care, Perioperative and Resuscitation. Cardiopulmonary resuscitation quality: [corrected] improving cardiac resuscitation outcomes both inside and outside the hospital: a consensus statement from the American Heart Association. *Circulation*. 2013;128:417–435. doi: 10.1161/CIR.0b013e31829d8654.
117. Sell RE, Sarno R, Lawrence B, Castillo EM, Fisher R, Brainard C, Dunford JV, Davis DP. Minimizing pre- and post-defibrillation pauses increases the likelihood of return of spontaneous circulation (ROSC). *Resuscitation*. 2010;81:822–825. doi: 10.1016/j.resuscitation.2010.03.013.
118. Cheskes S, Schmicker RH, Christenson J, Salcido DD, Rea T, Powell J, Edelson DP, Sell R, May S, Menegazzi JJ, Van Ottingham L, Olsufka M, Pennington S, Simonini J, Berg RA, Stiell I, Idris A, Bigham B, Morrison L; Resuscitation Outcomes Consortium (ROC) Investigators. Perishock pause: an independent predictor of survival from out-of-hospital shockable cardiac arrest. *Circulation*. 2011;124:58–66. doi: 10.1161/CIRCULATIONAHA.110.010736.
119. Cheskes S, Schmicker RH, Verbeek PR, Salcido DD, Brown SP, Brooks S, Menegazzi JJ, Vaillancourt C, Powell J, May S, Berg RA, Sell R, Idris A, Kampp M, Schmidt T, Christenson J; Resuscitation Outcomes Consortium (ROC) investigators. The impact of peri-shock pause on survival from out-of-hospital shockable cardiac arrest during the Resuscitation Outcomes Consortium PRIMED trial. *Resuscitation*. 2014;85:336–342. doi: 10.1016/j.resuscitation.2013.10.014.
120. Christenson J, Andrusiek D, Everson-Stewart S, Kudenchuk P, Hostler D, Powell J, Callaway CW, Bishop D, Vaillancourt C, Davis D, Aufderheide TP, Idris A, Stouffer JA, Stiell I, Berg R; Resuscitation Outcomes Consortium Investigators. Chest compression fraction determines survival in patients with out-of-hospital ventricular fibrillation. *Circulation*. 2009;120:1241–1247. doi: 10.1161/CIRCULATIONAHA.109.852202.
121. Vaillancourt C, Everson-Stewart S, Christenson J, Andrusiek D, Powell J, Nichol G, Cheskes S, Aufderheide TP, Berg R, Stiell IG; Resuscitation Outcomes Consortium Investigators. The impact of increased chest compression fraction on return of spontaneous circulation for out-of-hospital cardiac arrest patients not in ventricular fibrillation. *Resuscitation*. 2011;82:1501–1507. doi: 10.1016/j.resuscitation.2011.07.011.
122. Jost D, Degrange H, Verret C, Hersan O, Banville IL, Chapman FW, Lank P, Petit JL, Fuilla C, Migliani R, Carpentier JP; DEFI 2005 Work Group. DEFI 2005: a randomized controlled trial of the effect of automated external defibrillator cardiopulmonary resuscitation protocol on outcome from out-of-hospital cardiac arrest. *Circulation*. 2010;121:1614–1622. doi: 10.1161/CIRCULATIONAHA.109.878389.
123. Beesems SG, Wijmans L, Tijssen JG, Koster RW. Duration of ventilations during cardiopulmonary resuscitation by lay rescuers and first responders: relationship between delivering chest compressions and outcomes. *Circulation*. 2013;127:1585–1590. doi: 10.1161/CIRCULATIONAHA.112.000841.
124. Sugeran NT, Edelson DP, Leary M, Weidman EK, Herzberg DL, Vanden Hoek TL, Becker LB, Abella BS. Rescuer fatigue during actual in-hospital cardiopulmonary resuscitation with audiovisual feedback: a prospective multicenter study. *Resuscitation*. 2009;80:981–984.
125. Manders S, Geijsel FE. Alternating providers during continuous chest compressions for cardiac arrest: every minute or every two minutes? *Resuscitation*. 2009;80:1015–1018.
126. Heidenreich JW, Berg RA, Higdon TA, Ewy GA, Kern KB, Sanders AB. Rescuer fatigue: standard versus continuous chest-compression cardiopulmonary resuscitation. *Acad Emerg Med*. 2006;13:1020–1026.

- Hinchey PR, Myers JB, Lewis R, De Maio VJ, Reyer E, Licatese D, Zalkin J, Snyder G; Capital County Research Consortium. Improved out-of-hospital cardiac arrest survival after the sequential implementation of 2005 AHA guidelines for compressions, ventilations, and induced hypothermia: the Wake County experience. *Ann Emerg Med*. 2010;56:348–357. doi: 10.1016/j.annemergmed.2010.01.036.
128. Olasveengen TM, Vik E, Kuzovlev A, Sunde K. Effect of implementation of new resuscitation guidelines on quality of cardiopulmonary resuscitation and survival. *Resuscitation*. 2009;80:407–411. doi: 10.1016/j.resuscitation.2008.12.005.
129. Sayre MR, Cantrell SA, White LJ, Hiestand BC, Keseg DP, Koser S. Impact of the 2005 American Heart Association cardiopulmonary resuscitation and emergency cardiovascular care guidelines on out-of-hospital cardiac arrest survival. *Prehosp Emerg Care*. 2009;13:469–477. doi: 10.1080/10903120903144965.
130. Steinmetz J, Barnung S, Nielsen SL, Risom M, Rasmussen LS. Improved survival after an out-of-hospital cardiac arrest using new guidelines. *Acta Anaesthesiol Scand*. 2008;52:908–913. doi: 10.1111/j.1399-6576.2008.01657.x.
131. Hallstrom A, Cobb L, Johnson E, Copass M. Cardiopulmonary resuscitation by chest compression alone or with mouth-to-mouth ventilation. *N Engl J Med*. 2000;342:1546–1553. doi: 10.1056/NEJM200005253422101.
132. Bohm K, Rosenqvist M, Herlitz J, Hollenberg J, Svensson L. Survival is similar after standard treatment and chest compression only in out-of-hospital bystander cardiopulmonary resuscitation. *Circulation*. 2007;116:2908–2912. doi: 10.1161/CIRCULATIONAHA.107.710194.
133. Holmberg M, Holmberg S, Herlitz J; Swedish Cardiac Arrest Registry. Factors modifying the effect of bystander cardiopulmonary resuscitation on survival in out-of-hospital cardiac arrest patients in Sweden. *Eur Heart J*. 2001;22:511–519.
134. Bossaert L, Van Hoeyweghen R. Evaluation of cardiopulmonary resuscitation (CPR) techniques. The Cerebral Resuscitation Study Group. *Resuscitation*. 1989;17 suppl:S99–S109; discussion S199.
135. Gallagher EJ, Lombardi G, Gennis P. Effectiveness of bystander cardiopulmonary resuscitation and survival following out-of-hospital cardiac arrest. *JAMA*. 1995;274:1922–1925.
136. Mohler MJ, Wendel CS, Mosier J, Itty A, Fain M, Clark L, Bobrow B, Sanders AB. Cardiocerebral resuscitation improves out-of-hospital survival in older adults. *J Am Geriatr Soc*. 2011;59:822–826. doi: 10.1111/j.1532-5415.2011.03400.x.
137. Iwami T, Kitamura T, Kiyohara K, Kawamura T. Dissemination of chest compression-only cardiopulmonary resuscitation and survival after out-of-hospital cardiac arrest. *Circulation*. 2015;132:415–422. doi: 10.1161/CIRCULATIONAHA.114.014905.
138. Hastings RH, Wood PR. Head extension and laryngeal view during laryngoscopy with cervical spine stabilization maneuvers. *Anesthesiology*. 1994;80:825–831.
139. Gerling MC, Davis DP, Hamilton RS, Morris GF, Vilke GM, Garfin SR, Hayden SR. Effects of cervical spine immobilization technique and laryngoscope blade selection on an unstable cervical spine in a cadaver model of intubation. *Ann Emerg Med*. 2000;36:293–300. doi: 10.1067/mem.2000.109442.
140. Guildner CW. Resuscitation: opening the airway. A comparative study of techniques for opening an airway obstructed by the tongue. *JACEP*. 1976;5:588–590.
141. Greene DG, Elam JO, Dobkin AB, Studley CL. Cinefluorographic study of hyperextension of the neck and upper airway patency. *JAMA*. 1961;176:570–573.
142. Ruben HM, Elam JO, et al. Investigations of pharyngeal xrays and performance by laymen. *Anesthesiology*. 1961;22:271–279.
143. Elam JO, Greene DG, Schneider MA, Ruben HM, Gordon AS, Hustead RF, Benson DW, Clements JA, Ruben A. Head-tilt method of oral resuscitation. *JAMA*. 1960;172:812–815.
144. Rhee P, Kuncir EJ, Johnson L, Brown C, Velmahos G, Martin M, Wang D, Salim A, Doucet J, Kennedy S, Demetriades D. Cervical spine injury is highly dependent on the mechanism of injury following blunt and penetrating assault. *J Trauma*. 2006;61:1166–1170.
145. Lowery DW, Wald MM, Browne BJ, Tigges S, Hoffman JR, Mower WR. Epidemiology of cervical spine injury victims. *Ann Emerg Med*. 2001;38:12–16.
146. Milby AH, Halpern CH, Guo W, Stein SC. Prevalence of cervical spinal injury in trauma. *Neurosurg Focus*. 2008;25:E10.
147. Mithani SK, St-Hilaire H, Brooke BS, Smith IM, Bluebond-Langner R, Rodriguez ED. Predictable patterns of intracranial and cervical spine injury in craniomaxillofacial trauma: analysis of 4786 patients. *Plast Reconstr Surg*. 2009;123:1293–1301.
148. Hackl W, Hausberger K, Sailer R, Ulmer H, Gassner R. Prevalence of cervical spine injuries in patients with facial trauma. *Oral Surg Oral Med Oral Pathol Oral Radiol Endod*. 2001;92:370–376.
149. Holly LT, Kelly DF, Counelis GJ, Blinman T, McArthur DL, Cryer HG. Cervical spine trauma associated with moderate and severe head injury: incidence, risk factors, and injury characteristics. *J Neurosurg Spine*. 2002;96:285–291.
- 150.

Demetriades D, Charalambides K, Chahwan S, Hanpeter D, Alo K, Velmahos G, Murray J, Asensio J. Nonskeletal cervical spine injuries: epidemiology and diagnostic pitfalls. *J Trauma*. 2000;48:724–727.

151. Baskett P, Nolan J, Parr M. Tidal volumes which are perceived to be adequate for resuscitation. *Resuscitation*. 1996;31:231–234.
152. Berg RA, Kern KB, Hilwig RW, Berg MD, Sanders AB, Otto CW, Ewy GA. Assisted ventilation does not improve outcome in a porcine model of single-rescuer bystander cardiopulmonary resuscitation. *Circulation*. 1997;95:1635–1641.
153. Berg RA, Kern KB, Hilwig RW, Ewy GA. Assisted ventilation during 'bystander' CPR in a swine acute myocardial infarction model does not improve outcome. *Circulation*. 1997;96:4364–4371.
154. Tang W, Weil MH, Sun S, Kette D, Gazmuri RJ, O'Connell F, Bisera J. Cardiopulmonary resuscitation by precordial compression but without mechanical ventilation. *Am J Respir Crit Care Med*. 1994;150():1709–1713.
155. Wenzel V, Keller C, Idris AH, Dorges V, Lindner KH, Brimacombe JR. Effects of smaller tidal volumes during basic life support ventilation in patients with respiratory arrest: good ventilation, less risk? *Resuscitation*. 1999;43:25–29.
156. Dorges V, Ocker H, Hagelberg S, Wenzel V, Idris AH, Schmucker P. Smaller tidal volumes with room-air are not sufficient to ensure adequate oxygenation during bag-valve-mask ventilation. *Resuscitation*. 2000;44:37–41.
157. Dorges V, Ocker H, Hagelberg S, Wenzel V, Schmucker P. Optimisation of tidal volumes given with self-inflatable bags without additional oxygen. *Resuscitation*. 2000;43:195–199.
158. Finer NN, Barrington KJ, Al-Fadley F, Peters KL. Limitations of self-inflating resuscitators. *Pediatrics*. 1986;77:417–420.
159. Hirschman AM, Kravath RE. Venting vs ventilating. A danger of manual resuscitation bags. *Chest*. 1982;82:369–370.
160. Berg MD, Idris AH, Berg RA. Severe ventilatory compromise due to gastric distention during pediatric cardiopulmonary resuscitation. *Resuscitation*. 1998;36:71–73.
161. Garnett AR, Ornato JP, Gonzalez ER, Johnson EB. End-tidal carbon dioxide monitoring during cardiopulmonary resuscitation. *JAMA*. 1987;257:512–515.
162. Aufderheide TP, Sigurdsson G, Pirralo RG, Yannopoulos D, McKnite S, von Briesen C, Sparks CW, Conrad CJ, Provo TA, Lurie KG. Hyperventilation-induced hypotension during cardiopulmonary resuscitation. *Circulation*. 2004;109:1960–1965.
163. Sayre MR, Berg RA, Cave DM, Page RL, Potts J, White RD. Hands-only (compression-only) cardiopulmonary resuscitation: a call to action for bystander response to adults who experience out-of-hospital sudden cardiac arrest: a science advisory for the public from the American Heart Association Emergency Cardiovascular Care Committee. *Circulation*. 2008;117:2162–2167.
164. Berg RA, Sanders AB, Kern KB, Hilwig RW, Heidenreich JW, Porter ME, Ewy GA. Adverse hemodynamic effects of interrupting chest compressions for rescue breathing during cardiopulmonary resuscitation for ventricular fibrillation cardiac arrest. *Circulation*. 2001;104:2465–2470.
165. Kern KB, Hilwig RW, Berg RA, Sanders AB, Ewy GA. Importance of continuous chest compressions during cardiopulmonary resuscitation: improved outcome during a simulated single lay-rescuer scenario. *Circulation*. 2002;105:645–649.
166. Wang HE, Simeone SJ, Weaver MD, Callaway CW. Interruptions in cardiopulmonary resuscitation from paramedic endotracheal intubation. *Ann Emerg Med*. 2009;54:645–652 e641.
167. Kitamura T, Iwami T, Kawamura T, Nagao K, Tanaka H, Nadkarni VM, Berg RA, Hiraide A. Conventional and chest-compression-only cardiopulmonary resuscitation by bystanders for children who have out-of-hospital cardiac arrests: a prospective, nationwide, population-based cohort study. *Lancet*. 2010.
168. Berg RA, Hilwig RW, Kern KB, Ewy GA. "Bystander" chest compressions and assisted ventilation independently improve outcome from piglet asphyxial pulseless "cardiac arrest." *Circulation*. 2000;101:1743–1748.
169. Wenzel V, Idris AH, Banner MJ, Fuerst RS, Tucker KJ. The composition of gas given by mouth-to-mouth ventilation during CPR. *Chest*. 1994;106:1806–1810.
170. Ornato JP, Hallagan LF, McMahan SB, Peeples EH, Rostafinski AG. Attitudes of BCLS instructors about mouth-to-mouth resuscitation during the AIDS epidemic. *Ann Emerg Med*. 1990;19:151–156.
171. Brenner BE, Van DC, Cheng D, Lazar EJ. Determinants of reluctance to perform CPR among residents and applicants: the impact of experience on helping behavior. *Resuscitation*. 1997;35:203–211.
172. Hew P, Brenner B, Kaufman J. Reluctance of paramedics and emergency medical technicians to perform mouth-to-mouth resuscitation. *J Emerg Med*. 1997;15:279–284.
173. Ruben H. The immediate treatment of respiratory failure. *Br J Anaesth*. 1964;36:542–549.
- 174.

- Bhalla RK, Corrigan A, Roland NJ. Comparison of two face masks used to deliver early ventilation to laryngectomized patients. *Ear Nose Throat J.* 2004;83:414, 416.
175. Barnes TA. Emergency ventilation techniques and related equipment. *Respir Care.* 1992;37:673–690, discussion 690–674.
176. Johannigman JA, Branson RD, Davis K Jr., Hurst JM. Techniques of emergency ventilation: a model to evaluate tidal volume, airway pressure, and gastric insufflation. *J Trauma.* 1991;31:93–98.
177. Nichol G, Leroux B, Wang H, Callaway CW, Sopko G, Weisfeldt M, Stiell I, Morrison LJ, Aufderheide TP, Cheskes S, Christenson J, Kudenchuk P, Vaillancourt C, Rea TD, Idris AH, Colella R, Isaacs M, Straight R, Stephens S, Richardson J, Conde J, Schmicker RH, Egan D, May S, Ornato JP; for the ROC Investigators. Trial of continuous or interrupted chest compressions during CPR. *N Engl J Med.* 2015;373:2203–2214. doi: 10.1056/NEJMoa1509139.
178. Elam JO. Bag-valve-mask O₂ ventilation. In: Safar P, Elam JO, eds. *Advances in Cardiopulmonary Resuscitation: The Wolf Creek Conference on Cardiopulmonary Resuscitation.* New York, NY: Springer-Verlag, Inc.; 1977:73–79.
179. Dailey R, Young G, Simon B, Stewart R. *The Airway: Emergency Management.* C.V. Mosby; 1992.
180. Elling R, Politis J. An evaluation of emergency medical technicians' ability to use manual ventilation devices. *Ann Emerg Med.* 1983;12:765–768.
181. von Goedecke A, Bowden K, Wenzel V, Keller C, Gabrielli A. Effects of decreasing inspiratory times during simulated bag-valve-mask ventilation. *Resuscitation.* 2005;64:321–325.
182. von Goedecke A, Bowden K, Keller C, Voelckel WG, Jeske HC, Wenzel V. [Decreased inspiratory time during ventilation of an unprotected airway. Effect on stomach inflation and lung ventilation in a bench model.] *Anaesthesist.* 2005;54:117–122.
183. von Goedecke A, Paal P, Keller C, Voelckel WG, Herff H, Lindner KH, Wenzel V. [Ventilation of an unprotected airway: evaluation of a new peak-inspiratory-flow and airway-pressure-limiting bag-valve-mask.] *Anaesthesist.* 2006;55:629–634.
184. Rumball CJ, MacDonald D. The PTL Combitube, laryngeal mask, and oral airway: a randomized prehospital comparative study of ventilatory device effectiveness and cost-effectiveness in 470 cases of cardiorespiratory arrest. *Prehosp Emerg Care.* 1997;1:1–10.
185. Comparison of arterial blood gases of laryngeal mask airway and bag-valve-mask ventilation in out-of-hospital cardiac arrests. *Circ J.* 2009;73:490–496.
186. Stone BJ, Chantler PJ, Baskett PJ. The incidence of regurgitation during cardiopulmonary resuscitation: a comparison between the bag valve mask and laryngeal mask airway. *Resuscitation.* 1998;38:3–6.
187. Atherton GL, Johnson JC. Ability of paramedics to use the Combitube in prehospital cardiac arrest. *Ann Emerg Med.* 1993;22:1263–1268.
188. Kette F, Reffo I, Giordani G, Buzzi F, Borean V, Cimarosti R, Codiglia A, Hattinger C, Mongiat A, Tararan S. The use of laryngeal tube by nurses in out-of-hospital emergencies: Preliminary experience. *Resuscitation.* 2005;66:21–25.
189. Timmermann A, Russo SG, Rosenblatt WH, Eich C, Barwing J, Roessler M, Graf BM. Intubating laryngeal mask airway for difficult out-of-hospital airway management: a prospective evaluation. *Br J Anaesth.* 2007;99:286–291.
190. Saïssy JM, Boussignac G, Cheptel E, Rouvin B, Fontaine D, Barges L, Levecque JP, Michel A, Brochard L. Efficacy of continuous insufflation of oxygen combined with active cardiac compression-decompression during out-of-hospital cardiorespiratory arrest. *Anesthesiology.* 2000;92:1523–1530.
191. Bertrand C, Hemery F, Carli P, Goldstein P, Espesson C, Rüttimeann M, Macher JM, Raffy B, Fuster P, Dolveck F, Rozenberg A, Lecarpentier E, Duvaldestin P, Saïssy JM, Boussignac G, Brochard L; Boussignac Study Group. Constant flow insufflation of oxygen as the sole mode of ventilation during out-of-hospital cardiac arrest. *Intensive Care Med.* 2006;32:843–851. doi: 10.1007/s00134-006-0137-2.
192. McNelis U, Syndercombe A, Harper I, Duggan J. The effect of cricoid pressure on intubation facilitated by the gum elastic bougie. *Anaesthesia.* 2007;62:456–459.
193. Harry RM, Nolan JP. The use of cricoid pressure with the intubating laryngeal mask. *Anaesthesia.* 1999;54:656–659.
194. Noguchi T, Koga K, Shiga Y, Shigematsu A. The gum elastic bougie eases tracheal intubation while applying cricoid pressure compared to a stylet. *Can J Anaesth.* 2003;50:712–717.
195. Asai T, Murao K, Shingu K. Cricoid pressure applied after placement of laryngeal mask impedes subsequent fiberoptic tracheal intubation through mask. *Br J Anaesth.* 2000;85:256–261.
196. Snider DD, Clarke D, Finucane BT. The “BURP” maneuver worsens the glottic view when applied in combination with cricoid pressure. *Can J Anaesth.* 2005;52:100–104.
- 197.

- Smith CE, Boyer D. Cricoid pressure decreases ease of tracheal intubation using fiberoptic laryngoscopy (WuScope System). *Can J Anaesth.* 2002;49:614–619.
198. Asai T, Barclay K, Power I, Vaughan RS. Cricoid pressure impedes placement of the laryngeal mask airway and subsequent tracheal intubation through the mask. *Br J Anaesth.* 1994;72:47–51.
199. Domuracki KJ, Moule CJ, Owen H, Kostandoff G, Plummer JL. Learning on a simulator does transfer to clinical practice. *Resuscitation.* 2009;80:346–349.
200. Beavers RA, Moos DD, Cuddeford JD. Analysis of the application of cricoid pressure: implications for the clinician. *J Perianesth Nurs.* 2009;24:92–102.
201. Meek T, Gittins N, Duggan JE. Cricoid pressure: knowledge and performance amongst anaesthetic assistants. *Anaesthesia.* 1999;54:59–62.
202. Clark RK, Trethewey CE. Assessment of cricoid pressure application by emergency department staff. *Emerg Med Australas.* 2005;17:376–381.
203. Kopka A, Robinson D. The 50 ml syringe training aid should be utilized immediately before cricoid pressure application. *Eur J Emerg Med.* 2005;12:155–158.
204. Flucker CJ, Hart E, Weisz M, Griffiths R, Ruth M. The 50-millilitre syringe as an inexpensive training aid in the application of cricoid pressure. *Eur J Anaesthesiol.* 2000;17:443–447.
205. Shimabukuro A, Kawatani M, Nagao N, Inoue Y, Hayashida M, Hikawa Y. [Training in application of cricoid pressure.] *Masui.* 2006;55:742–744.
206. Schmidt A, Akeson J. Practice and knowledge of cricoid pressure in southern Sweden. *Acta Anaesthesiol Scand.* 2001;45:1210–1214.
207. Patten SP. Educating nurses about correct application of cricoid pressure. *AORN J.* 2006;84:449–461.
208. Koziol CA, Cuddeford JD, Moos DD. Assessing the force generated with application of cricoid pressure. *AORN J.* 2000;72:1018–1028, 1030.
209. Clayton TJ, Vanner RG. A novel method of measuring cricoid force. *Anaesthesia.* 2002;57:326–329.
210. Owen H, Follows V, Reynolds KJ, Burgess G, Plummer J. Learning to apply effective cricoid pressure using a part task trainer. *Anaesthesia.* 2002;57:1098–1101.
211. Kopka A, Crawford J. Cricoid pressure: a simple, yet effective biofeedback trainer. *Eur J Anaesthesiol.* 2004;21:443–447.
212. Quigley P, Jeffrey P. Cricoid pressure: assessment of performance and effect of training in emergency department staff. *Emerg Med Australas.* 2007;19:218–222.
213. Hallstrom AP, Ornato JP, Weisfeldt M, Travers A, Christenson J, McBurnie MA, Zalenski R, Becker LB, Schron EB, Proschan M; Public Access Defibrillation Trial Investigators. Public-access defibrillation and survival after out-of-hospital cardiac arrest. *N Engl J Med.* 2004;351:637–646. doi: 10.1056/NEJMoa040566.
214. Valenzuela TD, Roe DJ, Nichol G, Clark LL, Spaite DW, Hardman RG. Outcomes of rapid defibrillation by security officers after cardiac arrest in casinos. *N Engl J Med.* 2000;343:1206–1209. doi: 10.1056/NEJM200010263431701.
215. Agarwal DA, Hess EP, Atkinson EJ, White RD. Ventricular fibrillation in Rochester, Minnesota: experience over 18 years. *Resuscitation.* 2009;80:1253–1258. doi: 10.1016/j.resuscitation.2009.07.019.
216. Rea TD, Cook AJ, Stiell IG, Powell J, Bigham B, Callaway CW, Chugh S, Aufderheide TP, Morrison L, Terndrup TE, Beaudoin T, Wittwer L, Davis D, Idris A, Nichol G; Resuscitation Outcomes Consortium Investigators. Predicting survival after out-of-hospital cardiac arrest: role of the Utstein data elements. *Ann Emerg Med.* 2010;55:249–257. doi: 10.1016/j.annemergmed.2009.09.018.
217. Caffrey SL, Willoughby PJ, Pepe PE, Becker LB. Public use of automated external defibrillators. *N Engl J Med.* 2002;347:1242–1247. doi: 10.1056/NEJMoa020932.
218. Wik L, Hansen TB, Fylling F, Steen T, Vaagenes P, Auestad BH, Steen PA. Delaying defibrillation to give basic cardiopulmonary resuscitation to patients with out-of-hospital ventricular fibrillation: a randomized trial. *JAMA.* 2003;289:1389–1395.
219. Jacobs IG, Finn JC, Oxer HF, Jelinek GA. CPR before defibrillation in out-of-hospital cardiac arrest: a randomized trial. *Emerg Med Australas.* 2005;17:39–45. doi: 10.1111/j.1742-6723.2005.00694.x.
220. Baker PW, Conway J, Cotton C, Ashby DT, Smyth J, Woodman RJ, Grantham H; Clinical Investigators. Defibrillation or cardiopulmonary resuscitation first for patients with out-of-hospital cardiac arrests found by paramedics to be in ventricular fibrillation? A randomised control trial. *Resuscitation.* 2008;79:424–431. doi: 10.1016/j.resuscitation.2008.07.017.
- 221.

- Stiell IG, Nichol G, Leroux BG, Rea TD, Ornato JP, Powell J, Christenson J, Callaway CW, Kudenchuk PJ, Aufderheide TP, Idris AH, Daya MR, Wang HE, Morrison LJ, Davis D, Andrusiek D, Stephens S, Cheskes S, Schmicker RH, Fowler R, Vaillancourt C, Hostler D, Zive D, Pirralo RG, Vilke GM, Sopko G, Weisfeldt M; ROC Investigators. Early versus later rhythm analysis in patients with out-of-hospital cardiac arrest. *N Engl J Med*. 2011;365:787–797. doi: 10.1056/NEJMoa1010076.
222. Ma MH, Chiang WC, Ko PC, Yang CW, Wang HC, Chen SY, Chang WT, Huang CH, Chou HC, Lai MS, Chien KL, Lee BC, Hwang CH, Wang YC, Hsiung GH, Hsiao YW, Chang AM, Chen WJ, Chen SC. A randomized trial of compression first or analyze first strategies in patients with out-of-hospital cardiac arrest: results from an Asian community. *Resuscitation*. 2012;83:806–812. doi: 10.1016/j.resuscitation.2012.01.009.
223. Cobb LA, Fahrenbruch CE, Walsh TR, Copass MK, Olsufka M, Breskin M, Hallstrom AP. Influence of cardiopulmonary resuscitation prior to defibrillation in patients with out-of-hospital ventricular fibrillation. *JAMA*. 1999;281:1182–1188.
224. Hayakawa M, Gando S, Okamoto H, Asai Y, Uegaki S, Makise H. Shortening of cardiopulmonary resuscitation time before the defibrillation worsens the outcome in out-of-hospital VF patients. *Am J Emerg Med*. 2009;27:470–474. doi: 10.1016/j.ajem.2008.03.043.
225. Bradley SM, Gabriel EE, Aufderheide TP, Barnes R, Christenson J, Davis DP, Stiell IG, Nichol G; Resuscitation Outcomes Consortium Investigators. Survival increases with CPR by Emergency Medical Services before defibrillation of out-of-hospital ventricular fibrillation or ventricular tachycardia: observations from the Resuscitation Outcomes Consortium. *Resuscitation*. 2010;81:155–162. doi: 10.1016/j.resuscitation.2009.10.026.
226. Koike S, Tanabe S, Ogawa T, Akahane M, Yasunaga H, Horiguchi H, Matsumoto S, Imamura T. Immediate defibrillation or defibrillation after cardiopulmonary resuscitation. *Prehosp Emerg Care*. 2011;15:393–400. doi: 10.3109/10903127.2011.569848.
227. Meier P, Baker P, Jost D, Jacobs I, Henzi B, Knapp G, Sasson C. Chest compressions before defibrillation for out-of-hospital cardiac arrest: a meta-analysis of randomized controlled clinical trials. *BMC Med*. 2010;8:52. doi: 10.1186/1741-7015-8-52.
228. Simpson PM, Goodger MS, Bendall JC. Delayed versus immediate defibrillation for out-of-hospital cardiac arrest due to ventricular fibrillation: A systematic review and meta-analysis of randomised controlled trials. *Resuscitation*. 2010;81:925–931. doi: 10.1016/j.resuscitation.2010.04.016.
229. Huang Y, He Q, Yang LJ, Liu GJ, Jones A. Cardiopulmonary resuscitation (CPR) plus delayed defibrillation versus immediate defibrillation for out-of-hospital cardiac arrest. *Cochrane Database Syst Rev*. 2014;9:CD009803. doi: 10.1002/14651858.CD009803.pub2.
230. Rea T, Prince D, Morrison L, Callaway C, Aufderheide T, Daya M, Stiell I, Christenson J, Powell J, Warden C, van Ottingham L, Kudenchuk P, Weisfeldt M. Association between survival and early versus later rhythm analysis in out-of-hospital cardiac arrest: do agency-level factors influence outcomes? *Ann Emerg Med*. 2014;64:1–8. doi: 10.1016/j.annemergmed.2014.01.014.
231. Rea TD, Helbock M, Perry S, Garcia M, Cloyd D, Becker L, Eisenberg M. Increasing use of cardiopulmonary resuscitation during out-of-hospital ventricular fibrillation arrest: survival implications of guideline changes. *Circulation*. 2006;114:2760–2765. doi: 10.1161/CIRCULATIONAHA.106.654715.
232. Berdowski J, Tijssen JG, Koster RW. Chest compressions cause recurrence of ventricular fibrillation after the first successful conversion by defibrillation in out-of-hospital cardiac arrest. *Circ Arrhythm Electrophysiol*. 2010;3:72–78. doi: 10.1161/CIRCEP.109.902114.
233. Vadeboncoeur T, Bobrow BJ, Cone DC, Chikani V, Abella BS. Instant replay: perform CPR with immediate feedback. *JEMS*. 2011;36:50–63. doi: 10.1016/S0197-2510(11)70057-2.
234. Jollis JG, Granger CB, Henry TD, Antman EM, Berger PB, Moyer PH, Pratt FD, Rokos IC, Acuña AR, Roettig ML, Jacobs AK. Systems of care for ST-segment-elevation myocardial infarction: a report From the American Heart Association's Mission: Lifeline. *Circ Cardiovasc Qual Outcomes*. 2012;5:423–428. doi: 10.1161/CIRCOUTCOMES.111.964668.
235. Nestler DM, Noheria A, Haro LH, Stead LG, Decker WW, Scanlan-Hanson LN, Lennon RJ, Lim CC, Holmes DR Jr, Rihal CS, Bell MR, Ting HH. Sustaining improvement in door-to-balloon time over 4 years: the Mayo clinic ST-elevation myocardial infarction protocol. *Circ Cardiovasc Qual Outcomes*. 2009;2:508–513. doi: 10.1161/CIRCOUTCOMES.108.839225.
236. Santana MJ, Stelfox HT. Quality indicators used by trauma centers for performance measurement. *J Trauma Acute Care Surg*. 2012;72:1298–1302; discussion 12303. doi: 10.1097/TA.0b013e318246584c.
237. Abella BS, Edelson DP, Kim S, Retzer E, Myklebust H, Barry AM, O'Hearn N, Hoek TL, Becker LB. CPR quality improvement during in-hospital cardiac arrest using a real-time audiovisual feedback system. *Resuscitation*. 2007;73:54–61. doi: 10.1016/j.resuscitation.2006.10.027.
238. Bobrow BJ, Vadeboncoeur TF, Stolz U, Silver AE, Tobin JM, Crawford SA, Mason TK, Schirmer J, Smith GA, Spaite DW. The influence of scenario-based training and real-time audiovisual feedback on out-of-hospital cardiopulmonary resuscitation quality and survival from out-of-hospital cardiac arrest. *Ann Emerg Med*. 2013;62:47–56.e1. doi: 10.1016/j.annemergmed.2012.12.020.
239. Sutton RM, Niles D, French B, Maltese MR, Leffelman J, Eilevstjønn J, Wolfe H, Nishisaki A, Meaney PA, Berg RA, Nadkarni VM. First quantitative analysis of cardiopulmonary resuscitation quality during in-hospital cardiac arrests of young children. *Resuscitation*. 2014;85:70–74. doi: 10.1016/j.resuscitation.2013.08.014.

240. Chiang WC, Chen WJ, Chen SY, Ko PC, Lin CH, Tsai MS, Chang WT, Chen SC, Tsan CY, Ma MH. Better adherence to the guidelines during cardiopulmonary resuscitation through the provision of audio-prompts. *Resuscitation*. 2005;64:297–301. doi: 10.1016/j.resuscitation.2004.09.010.
241. Lukas RP, Gräsner JT, Seewald S, Lefering R, Weber TP, Van Aken H, Fischer M, Bohn A. Chest compression quality management and return of spontaneous circulation: a matched-pair registry study. *Resuscitation*. 2012;83:1212–1218. doi: 10.1016/j.resuscitation.2012.03.027.
242. Sainio M, Kämäräinen A, Huhtala H, Aaltonen P, Tenhunen J, Olkkola KT, Hoppu S. Real-time audiovisual feedback system in a physician-staffed helicopter emergency medical service in Finland: the quality results and barriers to implementation. *Scand J Trauma Resusc Emerg Med*. 2013;21:50. doi: 10.1186/1757-7241-21-50.
243. Ballew KA, Philbrick JT, Caven DE, Schorling JB. Predictors of survival following in-hospital cardiopulmonary resuscitation. A moving target. *Arch Intern Med*. 1994;154:2426–2432.
244. Shih CL, Lu TC, Jerng JS, Lin CC, Liu YP, Chen WJ, Lin FY. A web-based Utstein style registry system of in-hospital cardiopulmonary resuscitation in Taiwan. *Resuscitation*. 2007;72:394–403. doi: 10.1016/j.resuscitation.2006.07.020.
245. Bradley SM, Huszti E, Warren SA, Merchant RM, Sayre MR, Nichol G. Duration of hospital participation in Get With the Guidelines-Resuscitation and survival of in-hospital cardiac arrest. *Resuscitation*. 2012;83:1349–1357. doi: 10.1016/j.resuscitation.2012.03.014.
246. Matos RI, Watson RS, Nadkarni VM, Huang HH, Berg RA, Meaney PA, Carroll CL, Berens RJ, Praestgaard A, Weissfeld L, Spinella PC; American Heart Association's Get With The Guidelines-Resuscitation (Formerly the National Registry of Cardiopulmonary Resuscitation) Investigators. Duration of cardiopulmonary resuscitation and illness category impact survival and neurologic outcomes for in-hospital pediatric cardiac arrests. *Circulation*. 2013;127:442–451. doi: 10.1161/CIRCULATIONAHA.112.125625.
247. Goldberger ZD, Nichol G. Registries to measure and improve outcomes after cardiac arrest. *Curr Opin Crit Care*. 2013;19:208–213. doi: 10.1097/MCC.0b013e328360ad06.
248. American Heart Association. Get With The Guidelines?Resuscitation. http://www.heart.org/HEARTORG/HealthcareResearch/GetWithTheGuidelines-Resuscitation/Get-With-The-GuidelinesResuscitation_UCM_314496_SubHomePage.jsp. Accessed May 9, 2015.
249. Peberdy MA, Kaye W, Ornato JP, Larkin GL, Nadkarni V, Mancini ME, Berg RA, Nichol G, Lane-Trullt T. Cardiopulmonary resuscitation of adults in the hospital: a report of 14 720 cardiac arrests from the National Registry of Cardiopulmonary Resuscitation. *Resuscitation*. 2003;58:297–308.
250. Chan PS, Krumholz HM, Nichol G, Nallamothu BK; American Heart Association National Registry of Cardiopulmonary Resuscitation Investigators. Delayed time to defibrillation after in-hospital cardiac arrest. *N Engl J Med*. 2008;358:9–17. doi: 10.1056/NEJMoa0706467.
251. Chan PS, Nichol G, Krumholz HM, Spertus JA, Jones PG, Peterson ED, Rathore SS, Nallamothu BK; American Heart Association National Registry of Cardiopulmonary Resuscitation (NRCPR) Investigators. Racial differences in survival after in-hospital cardiac arrest. *JAMA*. 2009;302:1195–1201. doi: 10.1001/jama.2009.1340.
252. Goldberger ZD, Chan PS, Berg RA, Kronick SL, Cooke CR, Lu M, Banerjee M, Hayward RA, Krumholz HM, Nallamothu BK; American Heart Association Get With The Guidelines—Resuscitation (formerly National Registry of Cardiopulmonary Resuscitation) Investigators. Duration of resuscitation efforts and survival after in-hospital cardiac arrest: an observational study. *Lancet*. 2012;380:1473–1481. doi: 10.1016/S0140-6736(12)60862-9.
253. Resuscitation Outcomes Consortium. <https://roc.uwctc.org/tiki/tiki-index.php?page=roc-public-home>. Accessed May 6, 2015.
254. Aufderheide TP, Nichol G, Rea TD, Brown SP, Leroux BG, Pepe PE, Kudenchuk PJ, Christenson J, Daya MR, Dorian P, Callaway CW, Idris AH, Andrusiek D, Stephens SW, Hostler D, Davis DP, Dunford JV, Pirralo RG, Stiell IG, Clement CM, Craig A, Van Ottingham L, Schmidt TA, Wang HE, Weisfeldt ML, Ornato JP, Sopko G; Resuscitation Outcomes Consortium (ROC) Investigators. A trial of an impedance threshold device in out-of-hospital cardiac arrest. *N Engl J Med*. 2011;365:798–806. doi: 10.1056/NEJMoa1010821.
255. Kim F, Nichol G, Maynard C, Hallstrom A, Kudenchuk PJ, Rea T, Copass MK, Carlborn D, Deem S, Longstreth WT Jr, Olsufka M, Cobb LA. Effect of prehospital induction of mild hypothermia on survival and neurological status among adults with cardiac arrest: a randomized clinical trial. *JAMA*. 2014;311:45–52. doi: 10.1001/jama.2013.282173.
256. Newgard CD, Koprowicz K, Wang H, Monnig A, Kerby JD, Sears GK, Davis DP, Bulger E, Stephens SW, Daya MR; ROC Investigators. Variation in the type, rate, and selection of patients for out-of-hospital airway procedures among injured children and adults. *Acad Emerg Med*. 2009;16:1269–1276. doi: 10.1111/j.1553-2712.2009.00604.x.
257. National Center for Chronic Disease Prevention and Health Promotion, Division for Heart Disease and Stroke Prevention. Improving Emergency Cardiac Care Saves Lives: CARES Brochure. 2015. http://www.cdc.gov/dhds/docs/CARES_Brochure.pdf. Accessed May 9, 2015.
258. Centers for Disease and Control Prevention, Emory Woodruff Health Sciences Center. CARES: Cardiac Arrest Registry to Enhance Survival. 2015. <https://mycares.net/>. Accessed May 19, 2015.

259. McNally B, Robb R, Mehta M, Vellano K, Valderrama AL, Yoon PW, Sasson C, Crouch A, Perez AB, Merritt R, Kellermann A; Centers for Disease Control and Prevention. Out-of-hospital cardiac arrest surveillance—Cardiac Arrest Registry to Enhance Survival (CARES), United States, October 1, 2005–December 31, 2010. *MMWR Surveill Summ*. 2011;60:1–19.
260. Sasson C, Magid DJ, Haukoos JS. Neighborhood characteristics and bystander-initiated CPR. *N Engl J Med*. 2013;368:391–392. doi: 10.1056/NEJMc1214188.
261. Sasson C, Hegg AJ, Macy M, Park A, Kellermann A, McNally B; CARES Surveillance Group. Prehospital termination of resuscitation in cases of refractory out-of-hospital cardiac arrest. *JAMA*. 2008;300:1432–1438. doi: 10.1001/jama.300.12.1432.
262. Govindarajan P, Lin L, Landman A, McMullan JT, McNally BF, Crouch AJ, Sasson C. Practice variability among the EMS systems participating in Cardiac Arrest Registry to Enhance Survival (CARES). *Resuscitation*. 2012;83:76–80. doi: 10.1016/j.resuscitation.2011.06.026.
263. Fernandez R, Compton S, Jones KA, Vellilla MA. The presence of a family witness impacts physician performance during simulated medical codes. *Crit Care Med*. 2009;37:1956–1960. doi: 10.1097/CCM.0b013e3181a00818.
264. Goldberger ZD, Nallamothu BK, Nichol G, Chan PS, Curtis JR, Cooke CR; American Heart Association's Get With the Guidelines–Resuscitation Investigators. Policies allowing family presence during resuscitation and patterns of care during in-hospital cardiac arrest. *Circ Cardiovasc Qual Outcomes*. 2015;8:226–234. doi: 10.1161/CIRCOUTCOMES.114.001272.
265. Handley AJ. Recovery Position. *Resuscitation*. 1993;26:93–95.
266. Turner S, Turner I, Chapman D, Howard P, Champion P, Hatfield J, James A, Marshall S, Barber S. A comparative study of the 1992 and 1997 recovery positions for use in the UK. *Resuscitation*. 1998;39:153–160.
267. Gunn BD, Eizenberg N, Silberstein M, McMeeken JM, Tully EA, Stillman BC, Brown DJ, Gutteridge GA. How should an unconscious person with a suspected neck injury be positioned? *Prehospital Disaster Med*. 1995;10:239–244.
268. Blake WE, Stillman BC, Eizenberg N, Briggs C, McMeeken JM. The position of the spine in the recovery position—an experimental comparison between the lateral recovery position and the modified HAINES position. *Resuscitation*. 2002;53:289–297.
269. O'Gara PT, Kushner FG, Ascheim DD, Casey DE Jr, Chung MK, de Lemos JA, Ettinger SM, Fang JC, Fesmire FM, Franklin BA, Granger CB, Krumholz HM, Linderbaum JA, Morrow DA, Newby LK, Ornato JP, Ou N, Radford MJ, Tamis-Holland JE, Tommaso JE, Tracy CM, Woo YJ, Zhao DX. 2013 ACCF/AHA guideline for the management of ST-elevation myocardial infarction: executive summary: a report of the American College of Cardiology Foundation/American Heart Association Task Force on Practice Guidelines. *Circulation*. 2013;127:529–555. doi: 10.1161/CIR.0b013e3182742c84.
270. Amsterdam EA, Wenger NK, Brindis RG, Casey DE Jr, Ganiats TG, Holmes DR Jr, Jaffe AS, Jneid H, Kelly RF, Kontos MC, Levine GN, Liebson PR, Mukherjee D, Peterson ED, Sabatine MS, Smalling RW, Zieman SJ. 2014 AHA/ACC guideline for the management of patients with non-ST-elevation acute coronary syndromes: a report of the American College of Cardiology/ American Heart Association Task Force on Practice Guidelines. *Circulation*. 2014;130:e344–e426. doi: 10.1161/CIR.0000000000000134.
271. WRITING GROUP MEMBERS Lloyd-Jones D, Adams RJ, Brown TM, Carnethon M, Dai S, De Simone G, Ferguson TB, Ford E, Furie K, Gillespie C, Go A, Greenlund K, Haase N, Hailpern S, Ho PM, Howard V, Kissela B, Kittner S, Lackland D, Lisabeth L, Marelli A, McDermott MM, Meigs J, Mozaffarian D, Mussolino M, Nichol G, Roger VL, Rosamond W, Sacco R, Sorlie P, Stafford R, Thom T, Wasserthiel-Smoller S, Wong ND, Wylie-Rosett J. Committee on Stroke Statistics Subcommittee. Heart Disease and Stroke Statistics—2010 Update: A Report From the American Heart Association. *Circulation*. 2010;121:e46–e215.
272. Chiriboga D, Yarzebski J, Goldberg RJ, Gore JM, Alpert JS. Temporal trends (1975 through 1990) in the incidence and case-fatality rates of primary ventricular fibrillation complicating acute myocardial infarction: a communitywide perspective. *Circulation*. 1994;89:998–1003.
273. Anderson JL, Karagounis LA, Califf RM. Metaanalysis of five reported studies on the relation of early coronary patency grades with mortality and outcomes after acute myocardial infarction. *Am J Cardiol*. 1996;78:1–8.
274. Raitt MH, Maynard C, Wagner GS, Cerqueira MD, Selvester RH, Weaver WD. Relation between symptom duration before thrombolytic therapy and final myocardial infarct size. *Circulation*. 1996;93:48–53.
275. Douglas PS, Ginsburg GS. The evaluation of chest pain in women. *N Engl J Med*. 1996;334:1311–1315.
276. Solomon CG, Lee TH, Cook EF, Weisberg MC, Brand DA, Rouan GW, Goldman L. Comparison of clinical presentation of acute myocardial infarction in patients older than 65 years of age to younger patients: the Multicenter Chest Pain Study experience. *Am J Cardiol*. 1989;63:772–776.
277. Peberdy MA, Ornato JP. Coronary artery disease in women. *Heart Dis Stroke*. 1992;1:315–319.
278. Body R, Carley S, Wibberley C, McDowell G, Ferguson J, Mackway-Jones K. The value of symptoms and signs in the emergent diagnosis of acute coronary syndromes. *Resuscitation*. 2010;81:281–286.
279. Goodacre SW, Angelini K, Arnold J, Revill S, Morris F. Clinical predictors of acute coronary syndromes in patients with undifferentiated chest pain. *QJM*. 2003;96:893–898.

280. Goodacre S, Locker T, Morris F, Campbell S. How useful are clinical features in the diagnosis of acute, undifferentiated chest pain? *Acad Emerg Med.* 2002;9:203–208.
281. Everts B, Karlson BW, Wahrborg P, Hedner T, Herlitz J. Localization of pain in suspected acute myocardial infarction in relation to final diagnosis, age and sex, and site and type of infarction. *Heart Lung.* 1996;25:430–437.
282. McSweeney JC, Cody M, O'Sullivan P, Elbersson K, Moser DK, Garvin BJ. Women's early warning symptoms of acute myocardial infarction. *Circulation.* 2003;108:2619–2623.
283. Panju AA, Hemmelgarn BR, Guyatt GG, Simel DL. Is this patient having a myocardial infarction? *JAMA.* 1998;280:1256–1263.
284. Mant J, McManus RJ, Oakes RA, Delaney BC, Barton PM, Deeks JJ, Hammersley L, Davies RC, Davies MK, Hobbs FD. Systematic review and modelling of the investigation of acute and chronic chest pain presenting in primary care. *Health Technol Assess.* 2004;8:iii,1–158.
285. Berger JP, Buclin T, Haller E, Van Melle G, Yersin B. Right arm involvement and pain extension can help to differentiate coronary diseases from chest pain of other origin: a prospective emergency ward study of 278 consecutive patients admitted for chest pain. *J Intern Med.* 1990;227:165–172.
286. Jonsbu J, Rollag A, Aase O, Lippestad CT, Arnesen KE, Erikssen J, Koss A. Rapid and correct diagnosis of myocardial infarction: standardized case history and clinical examination provide important information for correct referral to monitored beds. *J Intern Med.* 1991;229:143–149.
287. Hargarten KM, Aprahamian C, Stueven H, Olson DW, Aufderheide TP, Mateer JR. Limitations of prehospital predictors of acute myocardial infarction and unstable angina. *Ann Emerg Med.* 1987;16:1325–1329.
288. Herlitz J, Hansson E, Ringvall E, Starke M, Karlson BW, Waagstein L. Predicting a life-threatening disease and death among ambulance-transported patients with chest pain or other symptoms raising suspicion of an acute coronary syndrome. *Am J Emerg Med.* 2002;20:588–594.
289. Lee TH, Pearson SD, Johnson PA, Garcia TB, Weisberg MC, Guadagnoli E, Cook EF, Goldman L. Failure of information as an intervention to modify clinical management. A time-series trial in patients with acute chest pain. *Ann Intern Med.* 1995;122:434–437.
290. Henrikson CA, Howell EE, Bush DE, Miles JS, Meininger GR, Friedlander T, Bushnell AC, Chandra-Strobos N. Chest pain relief by nitroglycerin does not predict active coronary artery disease. *Ann Intern Med.* 2003;139:979–986.
291. Lee TH, Rouan GW, Weisberg MC, Brand DA, Acampora D, Stasiulewicz C, Walshon J, Terranova G, Gottlieb L, Goldstein-Wayne B, et al. Clinical characteristics and natural history of patients with acute myocardial infarction sent home from the emergency room. *Am J Cardiol.* 1987;60:219–224.
292. Freimark D, Matetzky S, Leor J, Boyko V, Barbash IM, Behar S, Hod H. Timing of aspirin administration as a determinant of survival of patients with acute myocardial infarction treated with thrombolysis. *Am J Cardiol.* 2002;89:381–385.
293. Barbash IM, Freimark D, Gottlieb S, Hod H, Hasin Y, Battler A, Crystal E, Matetzky S, Boyko V, Mandelzweig L, Behar S, Leor J. Outcome of myocardial infarction in patients treated with aspirin is enhanced by pre-hospital administration. *Cardiology.* 2002;98:141–147.
294. Randomised trial of intravenous streptokinase, oral aspirin, both, or neither among 17 187 cases of suspected acute myocardial infarction: ISIS-2. ISIS-2 (Second International Study of Infarct Survival) Collaborative Group. *Lancet.* 1988;2:349–360.
295. Casaccia M, Bertello F, De Bernardi A, Sicuro M, Scacciarella P. Prehospital management of acute myocardial infarct in an experimental metropolitan system of medical emergencies [in Italian]. *G Ital Cardiol.* 1996;26:657–672.
296. Quan D, LoVecchio F, Clark B, Gallagher JV III. Prehospital use of aspirin rarely is associated with adverse events. *Prehosp Disaster Med.* 2004;19:362–365.
297. Verheugt FW, van der Laarse A, Funke-Kupper AJ, Sterkman LG, Galema TW, Roos JP. Effects of early intervention with low-dose aspirin (100 mg) on infarct size, reinfarction and mortality in anterior wall acute myocardial infarction. *Am J Cardiol.* 1990;66:267–270.
298. Le May MR, So DY, Dionne R, Glover CA, Froeschl MP, Wells GA, Davies RF, Sherrard HL, Maloney J, Marquis JF, O'Brien ER, Trickett J, Poirier P, Ryan SC, Ha A, Joseph PG, Labinaz M. A citywide protocol for primary PCI in ST-segment elevation myocardial infarction. *N Engl J Med.* 2008;358:231–240.
299. Stenestrand U, Lindback J, Wallentin L. Long-term outcome of primary percutaneous coronary intervention vs prehospital and in-hospital thrombolysis for patients with ST-elevation myocardial infarction. *JAMA.* 2006;296:1749–1756.
300. Le May MR, Davies RF, Dionne R, Maloney J, Trickett J, So D, Ha A, Sherrard H, Glover C, Marquis JF, O'Brien ER, Stiell IG, Poirier P, Labinaz M. Comparison of early mortality of paramedic-diagnosed ST-segment elevation myocardial infarction with immediate transport to a designated primary percutaneous coronary intervention center to that of similar patients transported to the nearest hospital. *Am J Cardiol.* 2006;98:1329–1333.
- 301.

- Wijesinghe M, Perrin K, Ranchord A, Simmonds M, Weatherall M, Beasley R. Routine use of oxygen in the treatment of myocardial infarction: systematic review. *Heart*. 2009;95:198–202.
302. Haynes BE, Pritting J. A rural emergency medical technician with selected advanced skills. *Prehosp Emerg Care*. 1999;3:343–346.
303. Funk D, Groat C, Verdile VP. Education of paramedics regarding aspirin use. *Prehosp Emerg Care*. 2000;4:62–64.
304. Bussmann WD, Passek D, Seidel W, Kaltenbach M. Reduction of CK and CK-MB indexes of infarct size by intravenous nitroglycerin. *Circulation*. 1981;63:615–622.
305. Charvat J, Kuruvilla T, al Amad H. Beneficial effect of intravenous nitroglycerin in patients with non-Q myocardial infarction. *Cardiologia*. 1990;35:49–54.
306. Jugdutt BI, Warnica JW. Intravenous nitroglycerin therapy to limit myocardial infarct size, expansion, and complications. Effect of timing, dosage, and infarct location. *Circulation*. 1988;78:906–919.
307. Jauch EC, Saver JL, Adams HP Jr, Bruno A, Connors JJ, Demaerschak BM, Khatri P, McMullan PW Jr, Qureshi AI, Rosenfield K, Scott PA, Summers DR, Wang DZ, Wintermark M, Yonas H; American Heart Association Stroke Council; Council on Cardiovascular Nursing; Council on Peripheral Vascular Disease; Council on Clinical Cardiology. Guidelines for the early management of patients with acute ischemic stroke: a guideline for healthcare professionals from the American Heart Association/American Stroke Association. *Stroke*. 2013;44:870–947. doi: 10.1161/STR.0b013e318284056a.
308. Powers WJ, Derdeyn CP, Biller J, Coffey CS, Hoh BL, Jauch EC, Johnston KC, Johnston SC, Khalessi AA, Kidwell CS, Meschia JF, Ovbiagele B, Yavagal DR; on behalf of the American Heart Association Stroke Council. 2015 American Heart Association/ American Stroke Association focused update of the 2013 guide- lines for the early management of patients with acute ischemic stroke regarding endovascular treatment: a guideline for health- care professionals from the American Heart Association/American Stroke Association. *Stroke*. 2015;46:XXX–XXX. doi: 10.1161/ STR.0000000000000074.
309. Barsan WG, Brott TG, Olinger CP, Adams HP Jr., Haley EC Jr., Levy DE. Identification and entry of the patient with acute cerebral infarction. *Ann Emerg Med*. 1988;17:1192–1195.
310. Barsan WG, Brott TG, Broderick JP, Haley EC, Levy DE, Marler JR. Time of hospital presentation in patients with acute stroke. *Arch Intern Med*. 1993;153:2558–2561.
311. Morgenstern LB, Bartholomew LK, Grotta JC, Staub L, King M, Chan W. Sustained benefit of a community and professional intervention to increase acute stroke therapy. *Arch Intern Med*. 2003;163:2198–2202.
312. Scott PA. Enhancing community delivery of tissue plasminogen activator in stroke through community-academic collaborative clinical knowledge translation. *Emerg Med Clin North Am*. 2009;27:115–136, ix.
313. Kleindorfer D, Khoury J, Broderick JP, Rademacher E, Woo D, Flaherty ML, Alwell K, Moomaw CJ, Schneider A, Pancioli A, Miller R, Kissela BM. Temporal trends in public awareness of stroke: warning signs, risk factors, and treatment. *Stroke*. 2009;40:2502–2506.
314. Smith WS, Isaacs M, Corry MD. Accuracy of paramedic identification of stroke and transient ischemic attack in the field. *Prehosp Emerg Care*. 1998;2:170–175.
315. Kidwell CS, Starkman S, Eckstein M, Weems K, Saver JL. Identifying stroke in the field. Prospective validation of the Los Angeles prehospital stroke screen (LAPSS). *Stroke*. 2000;31:71–76.
316. Smith WS, Corry MD, Fazackerley J, Isaacs SM. Improved paramedic sensitivity in identifying stroke victims in the prehospital setting. *Prehosp Emerg Care*. 1999;3:207–210.
317. Kim SK, Lee SY, Bae HJ, Lee YS, Kim SY, Kang MJ, Cha JK. Pre-hospital notification reduced the door-to-needle time for iv t-PA in acute ischaemic stroke. *Eur J Neurol*. 2009;16:1331–1335.
318. Quain DA, Parsons MW, Loudfoot AR, Spratt NJ, Evans MK, Russell ML, Royan AT, Moore AG, Miteff F, Hullick CJ, Attia J, McElduff P, Levi CR. Improving access to acute stroke therapies: a controlled trial of organised pre-hospital and emergency care. *Med J Aust*. 2008;189:429–433.
319. Abdullah AR, Smith EE, Biddinger PD, Kalenderian D, Schwamm LH. Advance hospital notification by EMS in acute stroke is associated with shorter door-to-computed tomography time and increased likelihood of administration of tissue-plasminogen activator. *Prehosp Emerg Care*. 2008;12:426–431.
320. Gropen TI, Gagliano PJ, Blake CA, Sacco RL, Kwiatkowski T, Richmond NJ, Leifer D, Libman R, Azhar S, Daley MB. Quality improvement in acute stroke: the New York State Stroke Center Designation Project. *Neurology*. 2006;67:88–93.
321. Gladstone DJ, Rodan LH, Sahlas DJ, Lee L, Murray BJ, Ween JE, Perry JR, Chenkin J, Morrison LJ, Beck S, Black SE. A citywide prehospital protocol increases access to stroke thrombolysis in Toronto. *Stroke*. 2009;40:3841–3844.
322. Langhorne P, Tong BL, Stott DJ. Association between physiological homeostasis and early recovery after stroke. *Stroke*. 2000;31:2518–2519.

323. Centers for Disease Control and Prevention. Drowning?United States, 2005–2009. *MMWR Morb Mortal Wkly Rep.* 2012;61:344–347.
324. Centers for Disease, Control, and Prevention. Fatal Injury Reports. *Injury Prevention & Control: Data & Statistics (WISQARS)*. 2015. http://www.cdc.gov/injury/wisqars/fatal_injury_reports.html. Accessed May 9, 2015.
325. Perkins GD. In-water resuscitation: a pilot evaluation. *Resuscitation.* 2005;65:321–324.
326. Rosen P, Stoto M, Harley J. The use of the Heimlich maneuver in near-drowning: Institute of Medicine report. *J Emerg Med.* 1995;13:397–405.
327. Watson RS, Cummings P, Quan L, Bratton S, Weiss NS. Cervical spine injuries among submersion victims. *J Trauma.* 2001;51:658–662.
328. Hwang V, Shofer FS, Durbin DR, Baren JM. Prevalence of traumatic injuries in drowning and near drowning in children and adolescents. *Arch Pediatr Adolesc Med.* 2003;157:50–53.
329. Fingerhut LA, Cox CS, Warner M International comparative analysis of injury mortality. Findings from the ICE on injury statistics. *International Collaborative Effort on Injury Statistics. Adv Data.* 1998():1–20.
330. Dolkas L, Stanley C, Smith AM, Vilke GM. Deaths associated with choking in San Diego county. *J Forensic Sci.* 2007;52:176–179.
331. Soroudi A, Shipp HE, Stepanski BM, Ray LU, Murrin PA, Chan TC, Davis DP, Vilke GM. Adult foreign body airway obstruction in the prehospital setting. *Prehosp Emerg Care.* 2007;11:25–29.
332. Redding JS. The choking controversy: critique of evidence on the Heimlich maneuver. *Crit Care Med.* 1979;7:475–479.
333. Vilke GM, Smith AM, Ray LU, Steen PJ, Murrin PA, Chan TC. Airway obstruction in children aged less than 5 years: the prehospital experience. *Prehosp Emerg Care.* 2004;8:196–199.
334. Ingalls TH. Heimlich versus a slap on the back. *N Engl J Med.* 1979;300:990.
335. Heimlich HJ, Hoffmann KA, Canestri FR. Food-choking and drowning deaths prevented by external subdiaphragmatic compression. Physiological basis. *Ann Thorac Surg.* 1975;20:188–195.
336. Boussuges S, Maitrerobert P, Bost M. [Use of the Heimlich Maneuver on children in the Rhone-Alpes area.] *Arch Fr Pediatr.* 1985;42:733–736.
337. Guildner CW, Williams D, Subitch T. Airway obstructed by foreign material: the Heimlich maneuver. *JACEP.* 1976;5:675–677.
338. Langhelle A, Sunde K, Wik L, Steen PA. Airway pressure with chest compressions versus Heimlich manoeuvre in recently dead adults with complete airway obstruction. *Resuscitation.* 2000;44:105–108.
339. Ruben H, Macnaughton FI. The treatment of food-choking. *Practitioner.* 1978;221:725–729.
340. Brauner DJ. The Heimlich maneuver: procedure of choice? *J Am Geriatr Soc.* 1987;35:78.
341. Hartrey R, Bingham RM. Pharyngeal trauma as a result of blind finger sweeps in the choking child. *J Accid Emerg Med.* 1995;12:52–54.
342. Kabbani M, Goodwin SR. Traumatic epiglottitis following blind finger sweep to remove a pharyngeal foreign body. *Clin Pediatr (Phila).* 1995;34:495–497.